

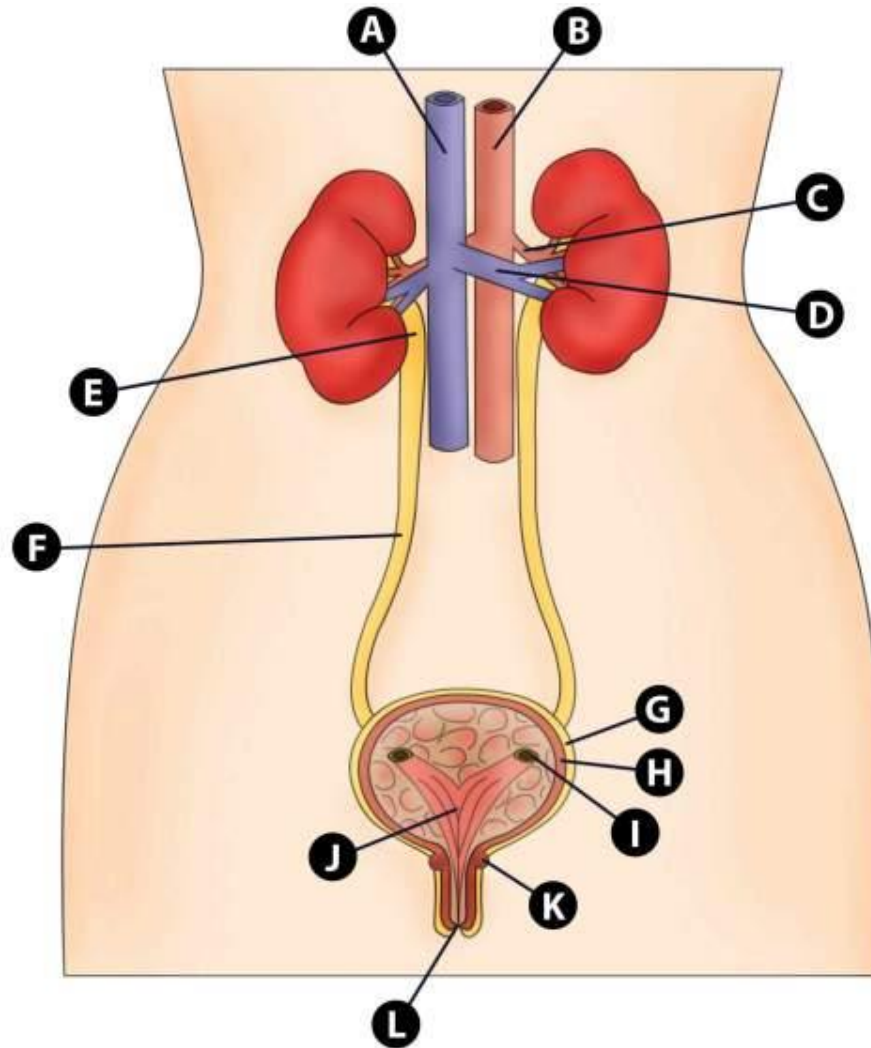


THE URINARY SYSTEM

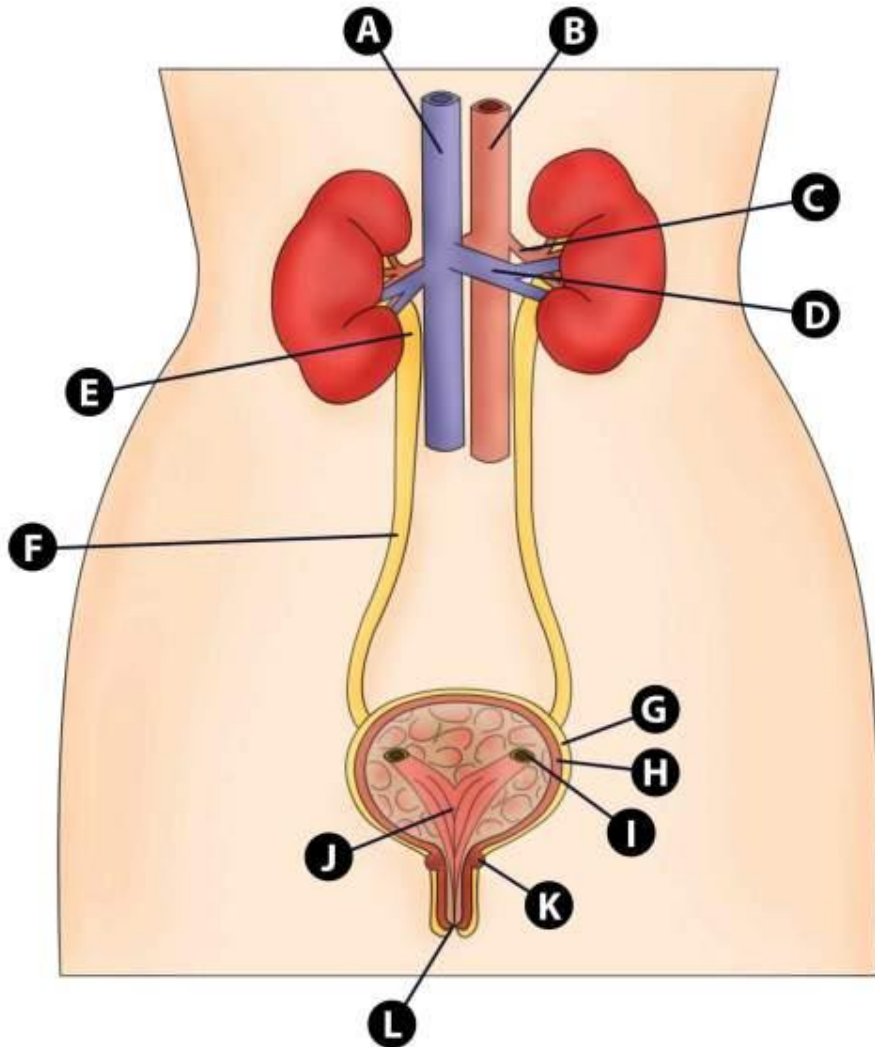
- IDENTIFY ALL THE LABELS ON THE FOLLOWING SERIES OF IMAGES



THE URINARY TRACT

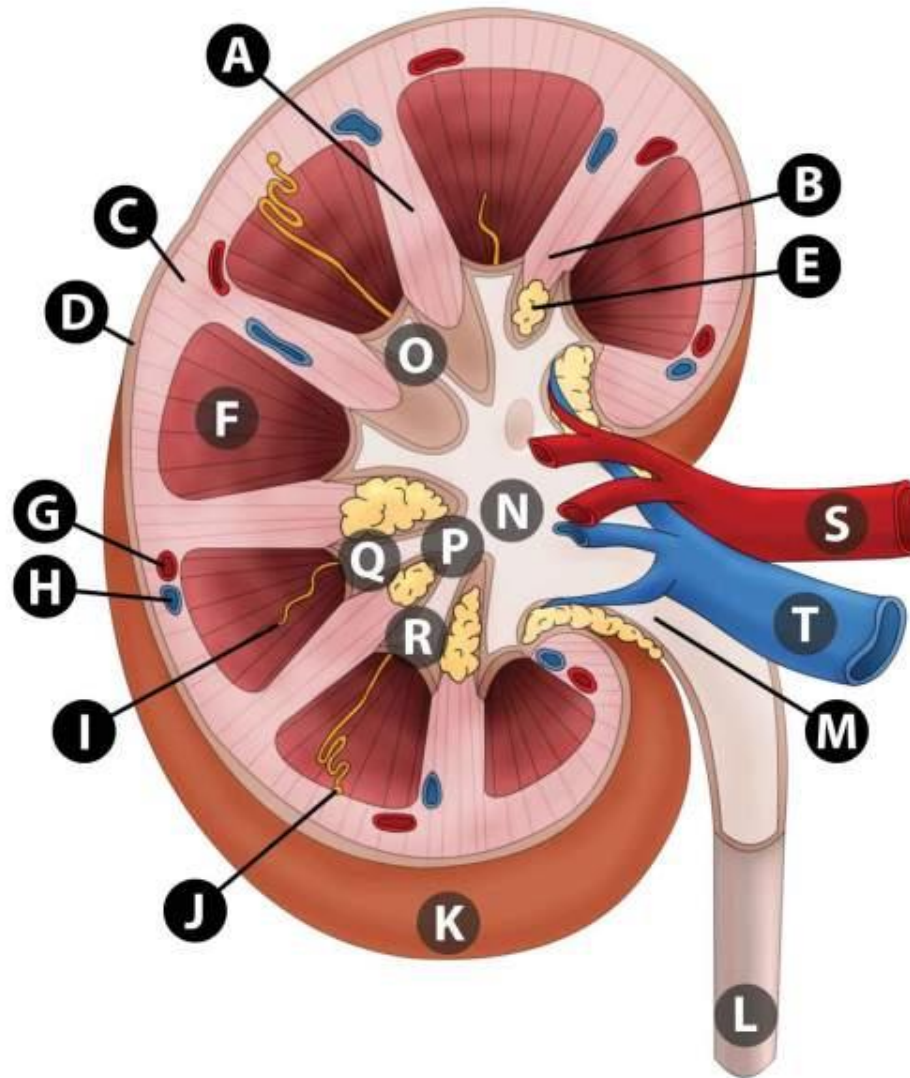


THE URINARY TRACT



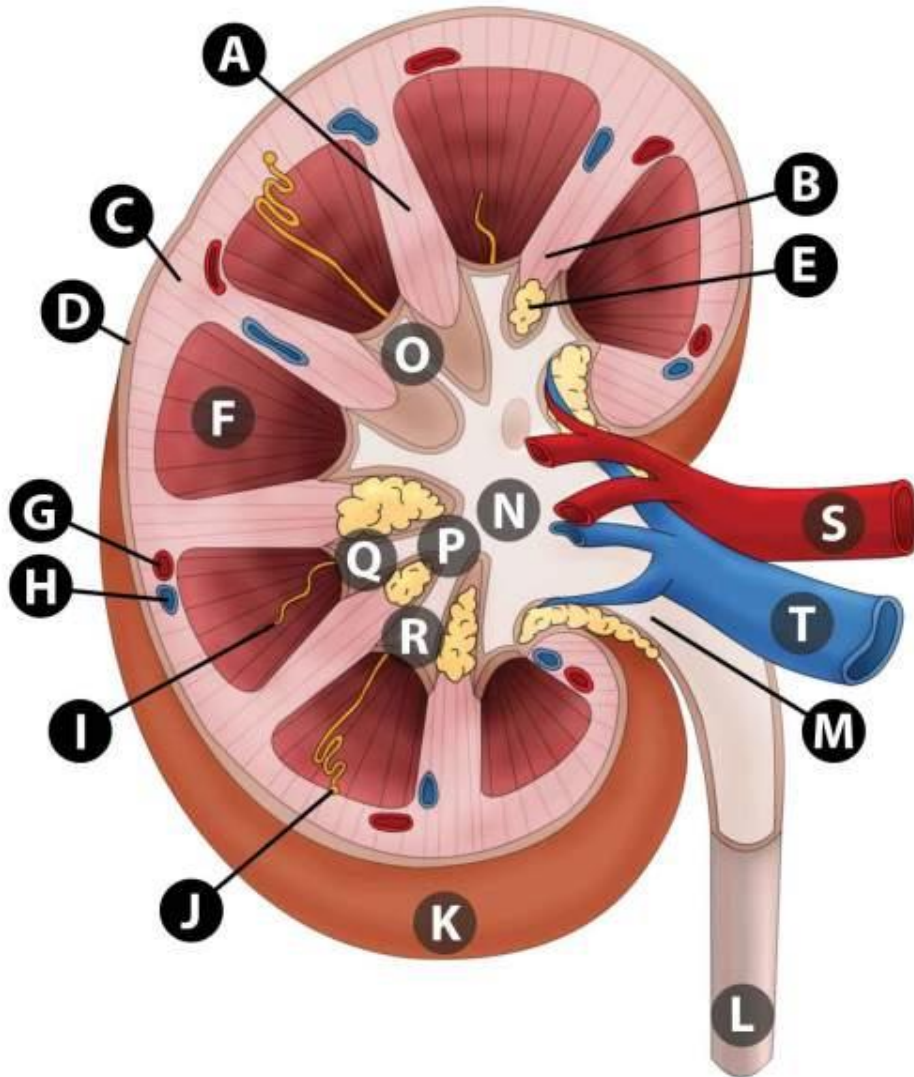
- A. INFERIOR VENA CAVA
- B. ABDOMINAL AORTA
- C. RENAL ARTERY
- D. RENAL VEIN
- E. RENAL PELVIS
- F. URETER
- G. VISCERAL LAYER
- H. DETRUSOR MUSCLE
- I. URETERAL OPENING
- J. TRIGONE
- K. INTERNAL SPHINCTER
- L. EXTERNAL URETHRAL OPENING / EXTERNAL SPHINCTER

Kidney



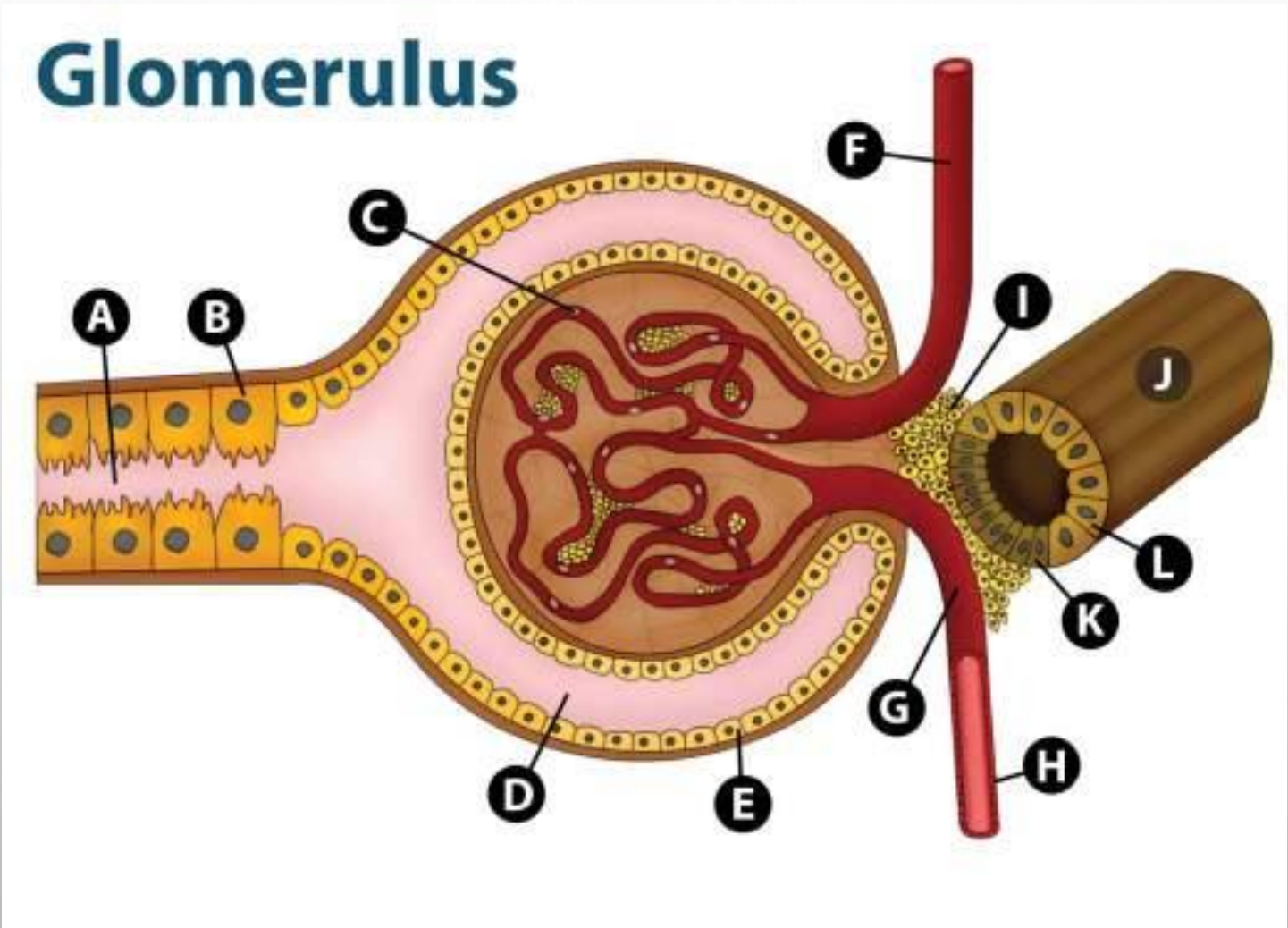
THE KIDNEY

Kidney



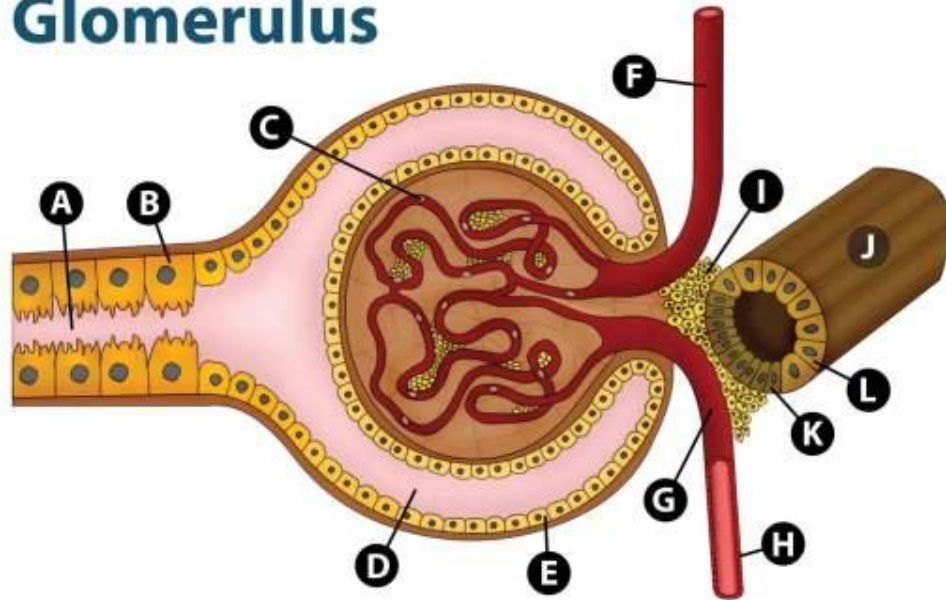
- A. RENAL COLUMN
- B. RENAL COLUMN
- C. RENAL CORTEX
- D. RENAL CAPSULE
- E. FAT WITHIN RENAL SINUS
- F. RENAL PYRAMID
- G. ARCUATE ARTERY
- H. ARCUATE VEIN
- I. JUXTAMEDULLARY NEPHRON
- J. CORTICAL NEPHRON
- K. LOWER POLE OF THE KIDNEY / RENAL CAPSULE
- L. URETER
- M. RENAL PELVIS
- N. RENAL PELVIS
- O. MINOR CALYX
- P. MAJOR CALYX
- Q. MINOR CALYX
- R. MINOR CALYX
- S. RENAL ARTERY
- T. RENAL VEIN

STRUCTURE OF THE GLOMERULUS



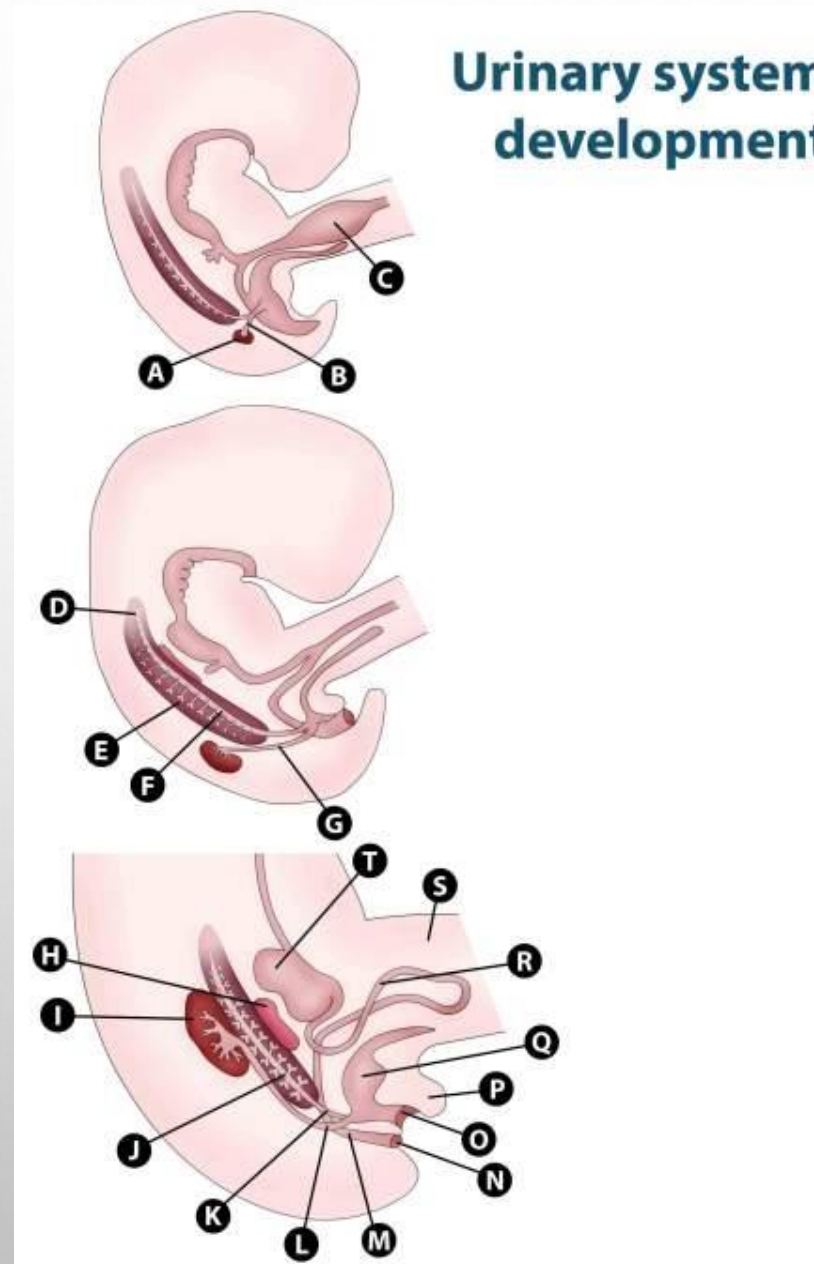
STRUCTURE OF THE GLOMERULUS

Glomerulus



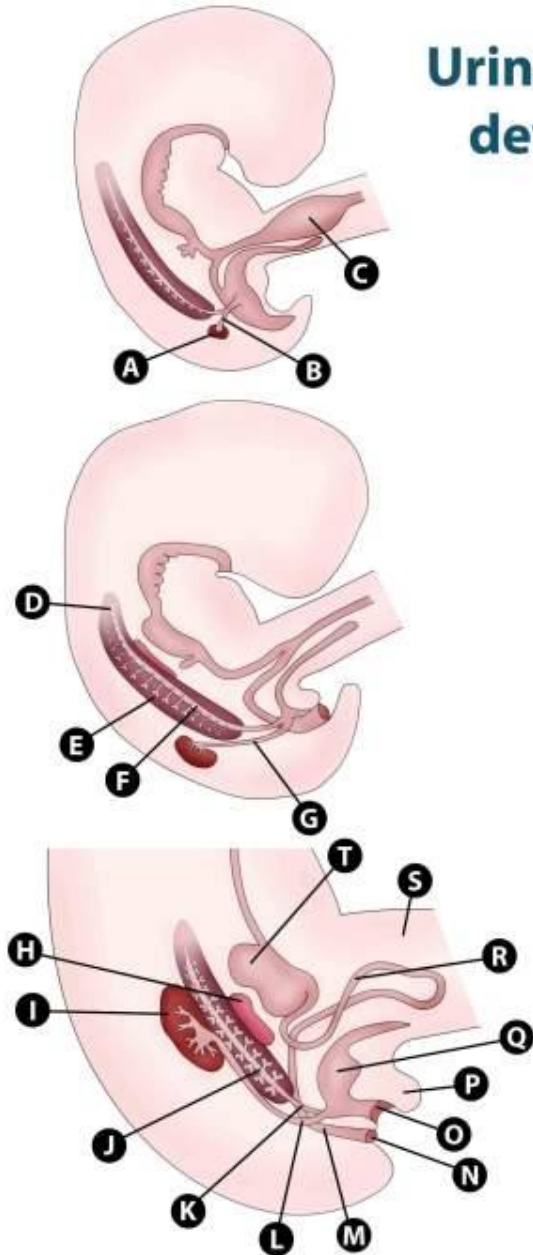
- A. PROXIMAL CONVOLUTED TUBULE
- B. CUBOIDAL CILIATED EPITHELIUM
- C. GLOMERULAR CAPSULE
- D. CAPSULAR SPACE
- E. PARIETAL LAYER OF BOWMAN'S CAPSULE
- F. AFFERENT ARTERIOLE
- G. EFFERENT ARTERIOLE
- H. ARTERIOLE WALLS / ENDOTHELIUM
- I. MESANGIAL CELLS (JUXTAGLOMERULAR APPARATUS CELLS)
- J. DISTAL TUBULE / ASCENDING LOOP OF HENLE
- K. MACULA Densa CELLS
- L. ENDOTHELIAL CELLS

DEVELOPMENT OF THE URINARY SYSTEM



DEVELOPMENT OF THE URINARY SYSTEM

Urinary system development



- A. METANEPHRIC MESODERM
- B. URETERIC BUD
- C. YOLK SAC
- D. DEGENERATING PRONEPHROS
- E. MESONEPHROS
- F. MESONEPHRIC DUCT
- G. URETER
- H. GONAD
- I. KIDNEY
- J. MESONEPHRIC DUCT
- K. MESONEPHRIC DUCT
- L. URETER
- M. RECTUM
- N. ANUS
- O. UROGENITAL SINUS
- P. GENITAL TUBERCLE
- Q. URINARY BLADDER
- R. JEJUNUM / ILEUM
- S. UMBILICUS
- T. STOMACH

END