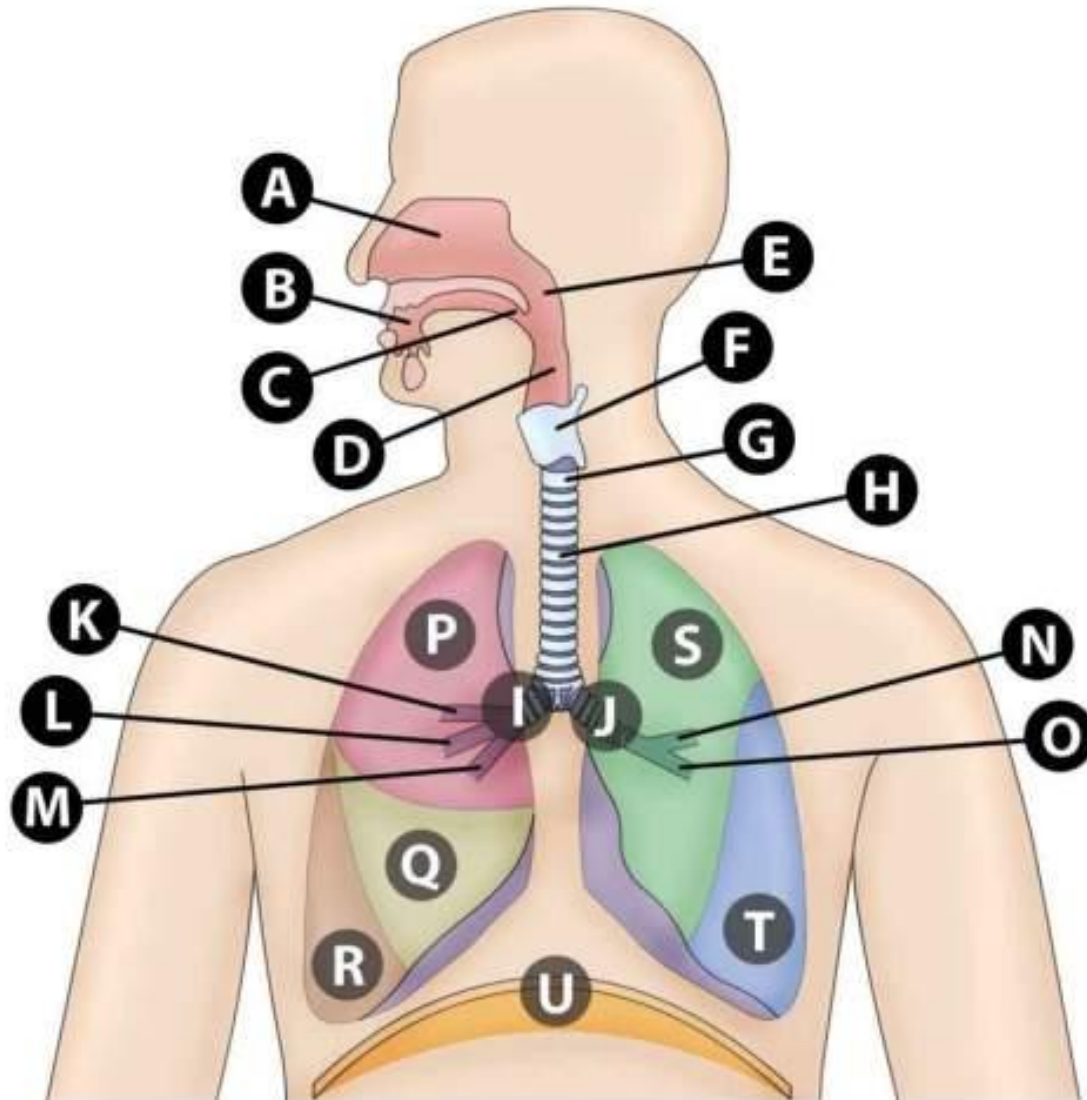


The background of the slide is a light gray gradient with several realistic water droplets of various sizes scattered across it. The droplets have highlights and shadows, giving them a three-dimensional appearance.

THE RESPIRATORY SYSTEM

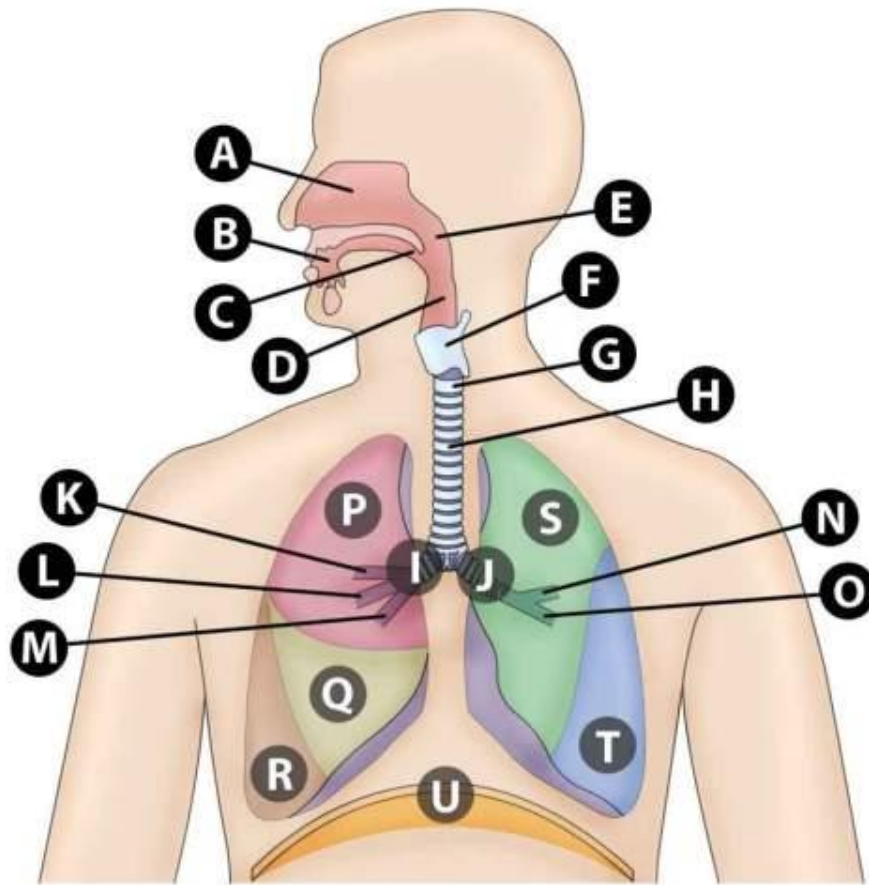
IDENTIFY ALL THE STRUCTURES ON THE FOLLOWING
ANATOMICAL IMAGES

Respiratory tract



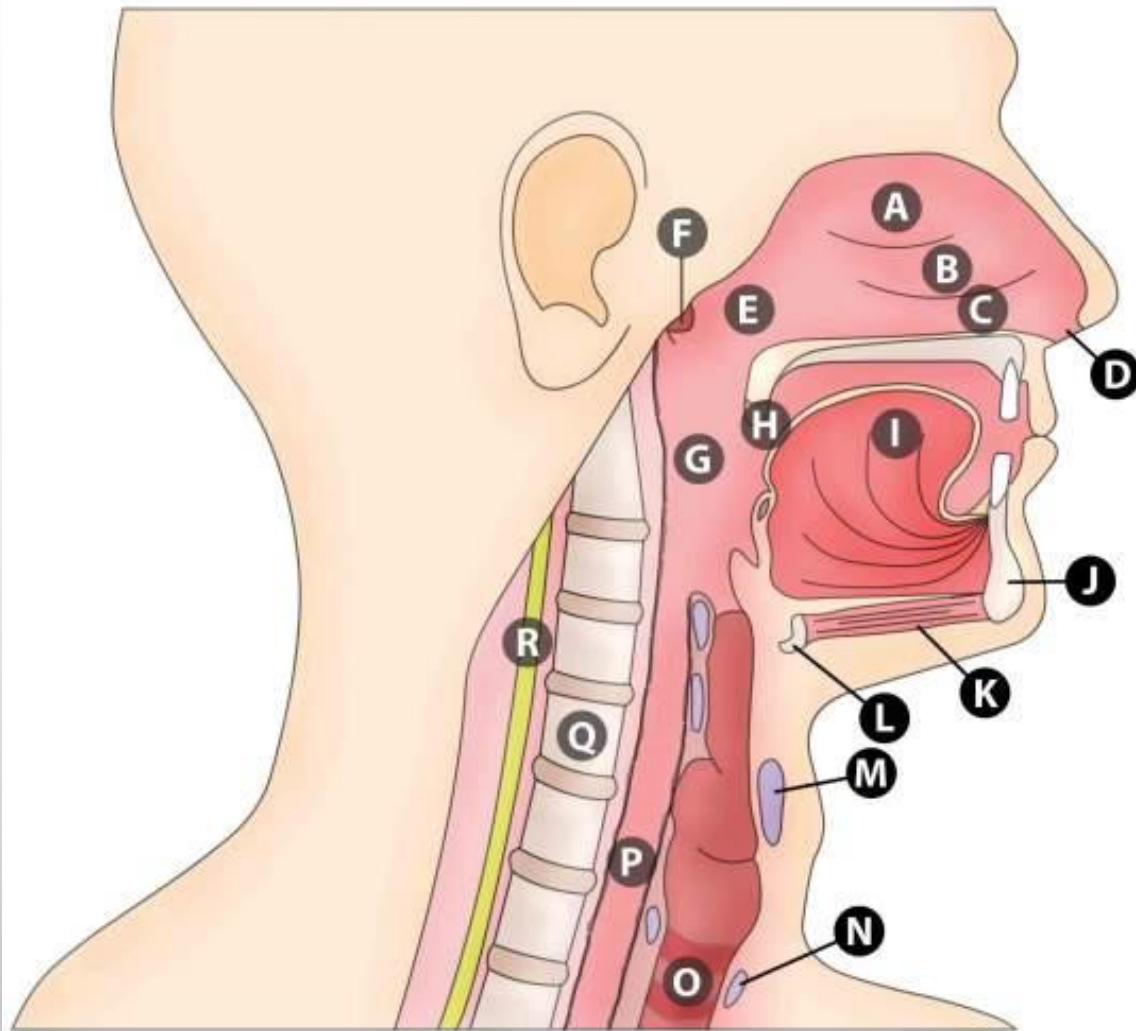
RESPIRATORY TRACT

Respiratory tract

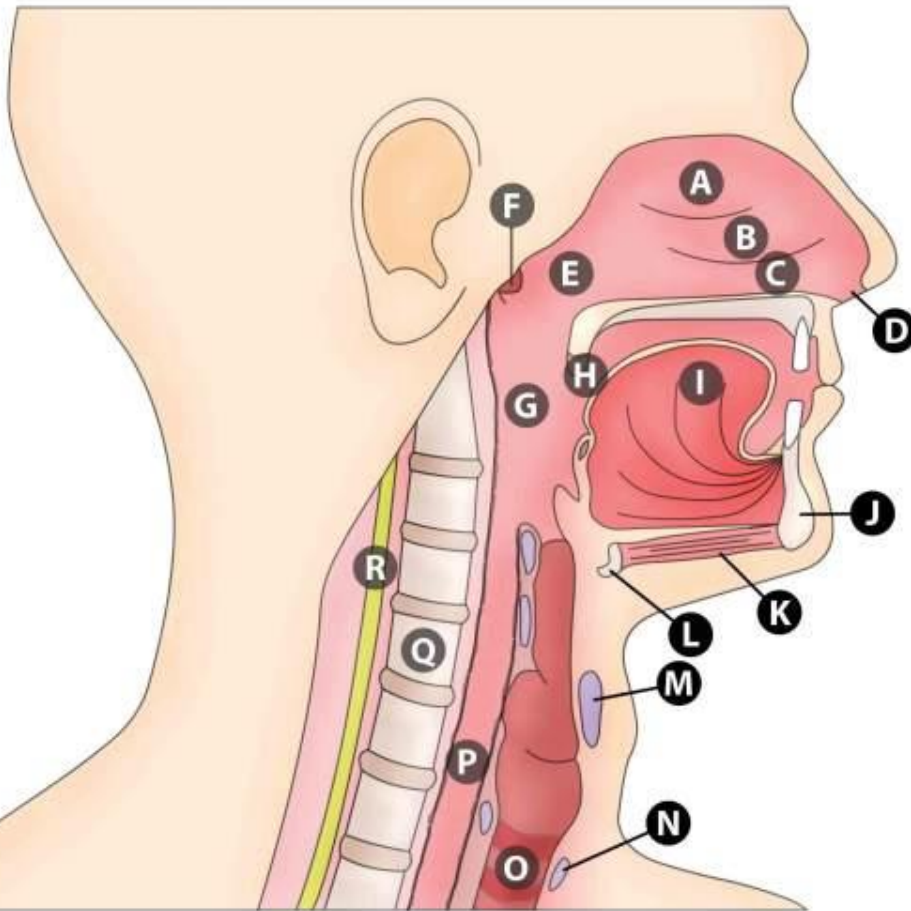


- A. NASAL CAVITY
- B. ORAL CAVITY
- C. OROPHARYNX
- D. LARYNGOPHARYNX
- E. NASOPHARYNX
- F. THYROID CARTILAGE
- G. CRICOID CARTILAGE
- H. TRACHEA
- I. RIGHT PRIMARY BRONCHUS
- J. LEFT PRIMARY BRONCHUS
- K. SUPERIOR LOBAR BRONCHUS
- L. MIDDLE LOBAR BRONCHUS
- M. INFERIOR LOBAR BRONCHUS
- N. LEFT SUPERIOR LOBAR BRONCHUS
- O. LEFT INFERIOR LOBAR BRONCHUS
- P. RIGHT SUPERIOR LOBE
- Q. MIDDLE SUPERIOR LOBE
- R. INFERIOR SUPERIOR LOBE
- S. LEFT SUPERIOR LOBE
- T. LEFT INFERIOR LOBE
- U. DIAPHRAGM

Upper respiratory tract



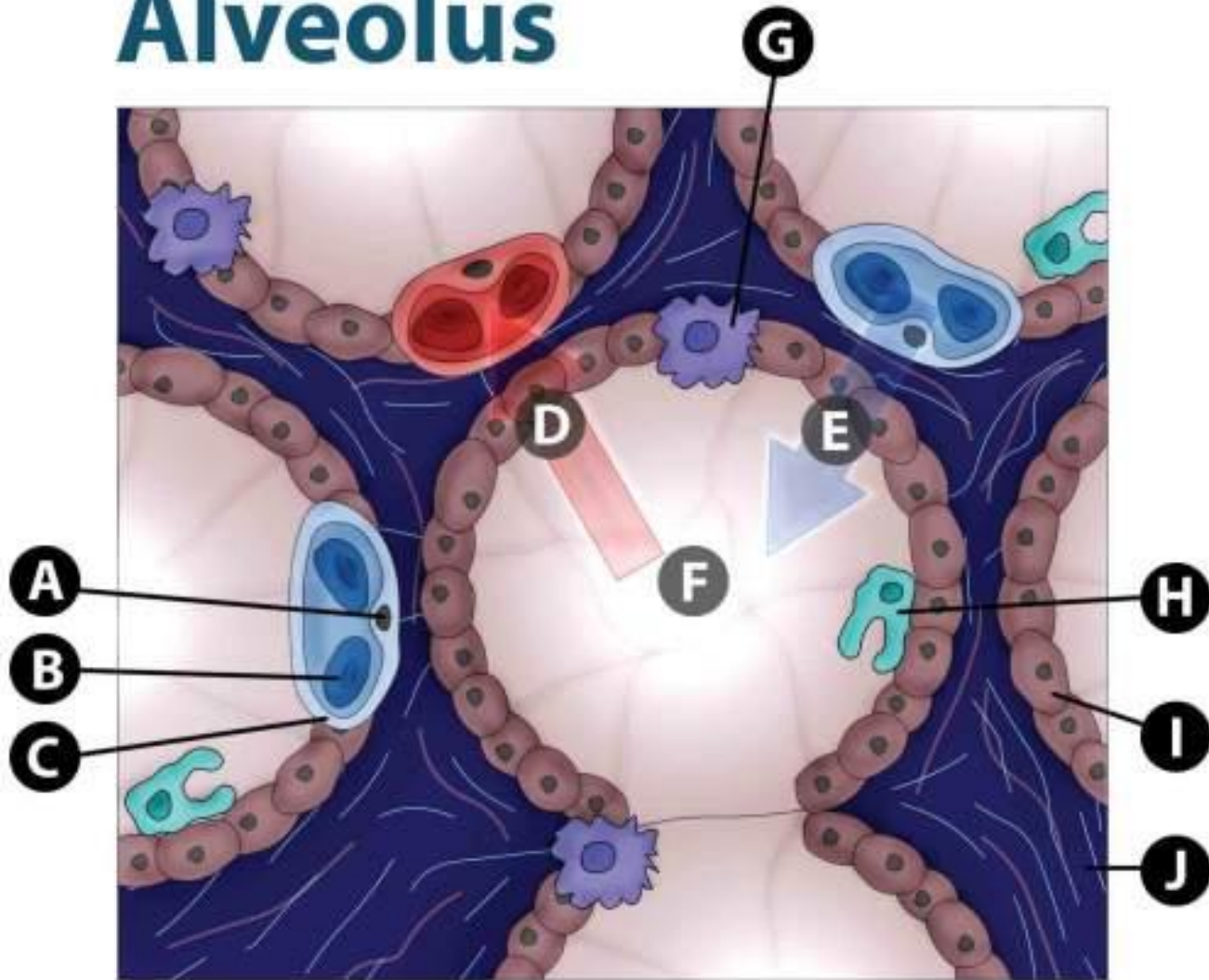
Upper respiratory tract



- A. SUPERIOR CONCHA
- B. MIDDLE CONCHA
- C. INFERIOR CONCHA
- D. EXTERNAL NARIS
- E. NASOPHARYNX
- F. ORIFICE OF EUSTACHIAN TUBE
- G. LARYNGOPHARYNX
- H. OROPHARYNX
- I. TONGUE
- J. MANDIBLE
- K. HYOID MUSCLES:
MYLOHYOID/DIGASTRIC/STYLOHYOID
- L. HYOID BONE
- M. THYROID CARTILAGE
- N. CRICOID CARTILAGE
- O. LARYNX
- P. OESOPHAGUS
- Q. BODIES OF CERVICAL VERTEBRAE
- R. SPINAL CORD

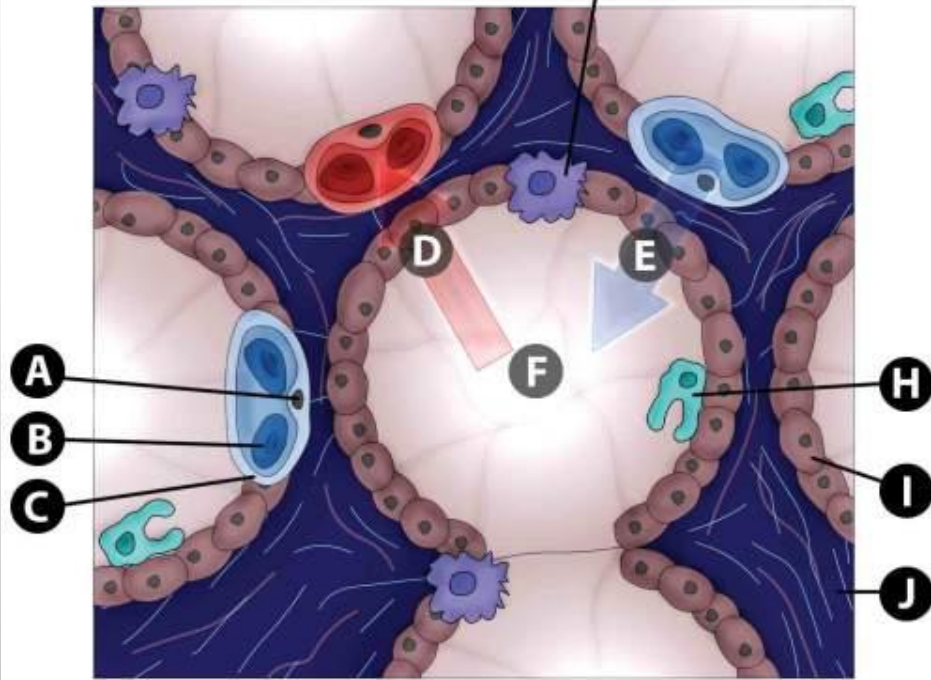
STRUCTURE OF THE ALVEOLII

Alveolus



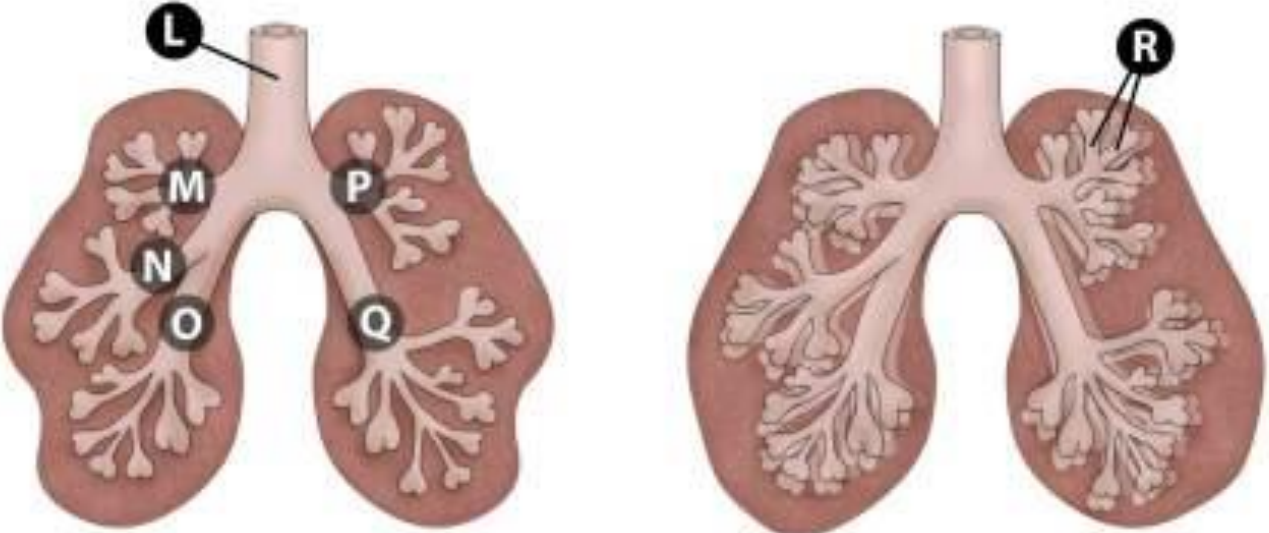
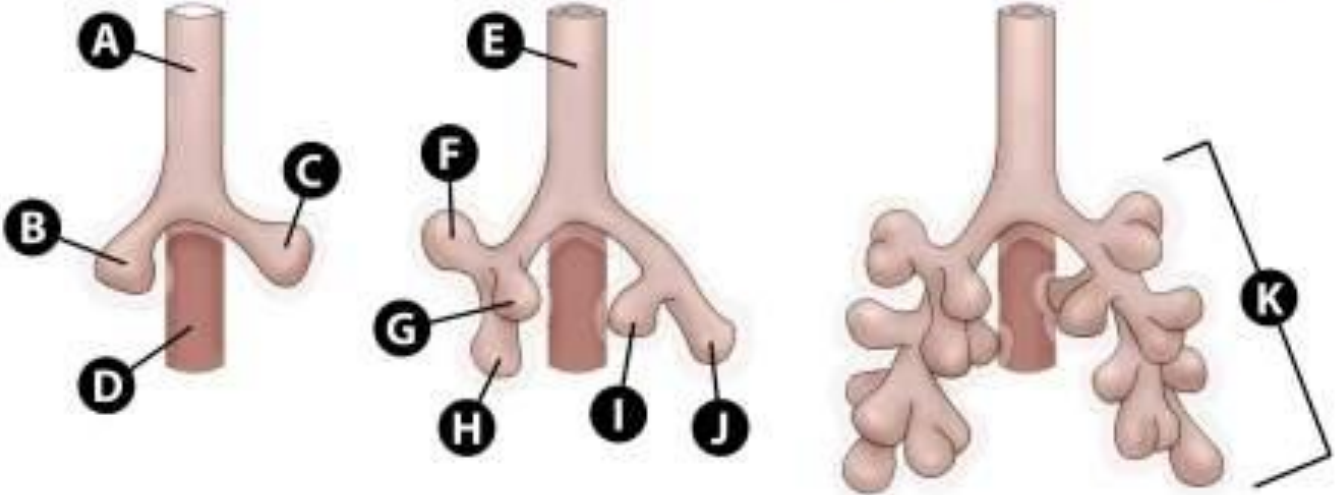
STRUCTURE OF THE ALVEOLII

Alveolus



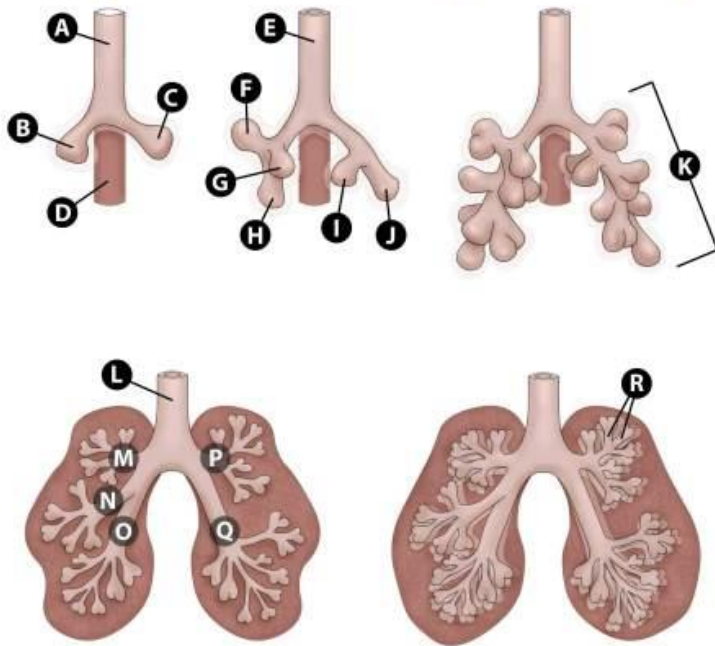
- A. NUCLEUS OF ENDOTHELIUM
- B. ERYTHROCYTE - DEOXYGENATED
- C. CELL MEMBRANE/CYTOPLASM.
- D. OXYGEN ENTERING THE CAPILLARY FROM THE ALVEOLUS
- E. CO² ENTERING THE CAPILLARY FROM THE ALVEOLUS
- F. ALVEOLUS.
- G. TYPE II ALVEOLAR CELL.
- H. ALVEOLAR MACROPHAGE
- I. ALVEOLAR ENDOTHELIAL CELLS
- J. ELASTIC CONNECTIVE TISSUE

Development of the respiration system



DEVELOPMENT OF THE RESPIRATORY SYSTEM

Development of the respiration system



- A. PRIMITIVE TRACHEA
- B. LUNG BUD – RIGHT LUNG
- C. LUNG BUD – RIGHT LUNG
- D. OESOPHAGUS
- E. PRIMITIVE TRACHEA
- F. PRIMITIVE RIGHT SUP. LOBE
- G. PRIMITIVE RIGHT MID. LOBE
- H. PRIMITIVE RIGHT INF. LOBE
- I. PRIMITIVE LEFT SUP. LOBE
- J. PRIMITIVE LEFT INF. LOBE
- K. LEFT LUNG
- L. TRACHEA
- M. RIGHT SUP. PRIMARY BRONCHUS
- N. RIGHT MID. PRIMARY BRONCHUS
- O. RIGHT SUP. PRIMARY BRONCHUS
- P. LEFT SUP. PRIMARY BRONCHUS
- Q. LEFT INF. PRIMARY BRONCHUS
- R. LEFT SUP. LOBE

The image features a light gray background with several realistic water droplets of various sizes scattered across it. The droplets are rendered with soft shadows and highlights, giving them a three-dimensional appearance. The word "END" is centered in the lower half of the image in a bold, black, sans-serif font.

END