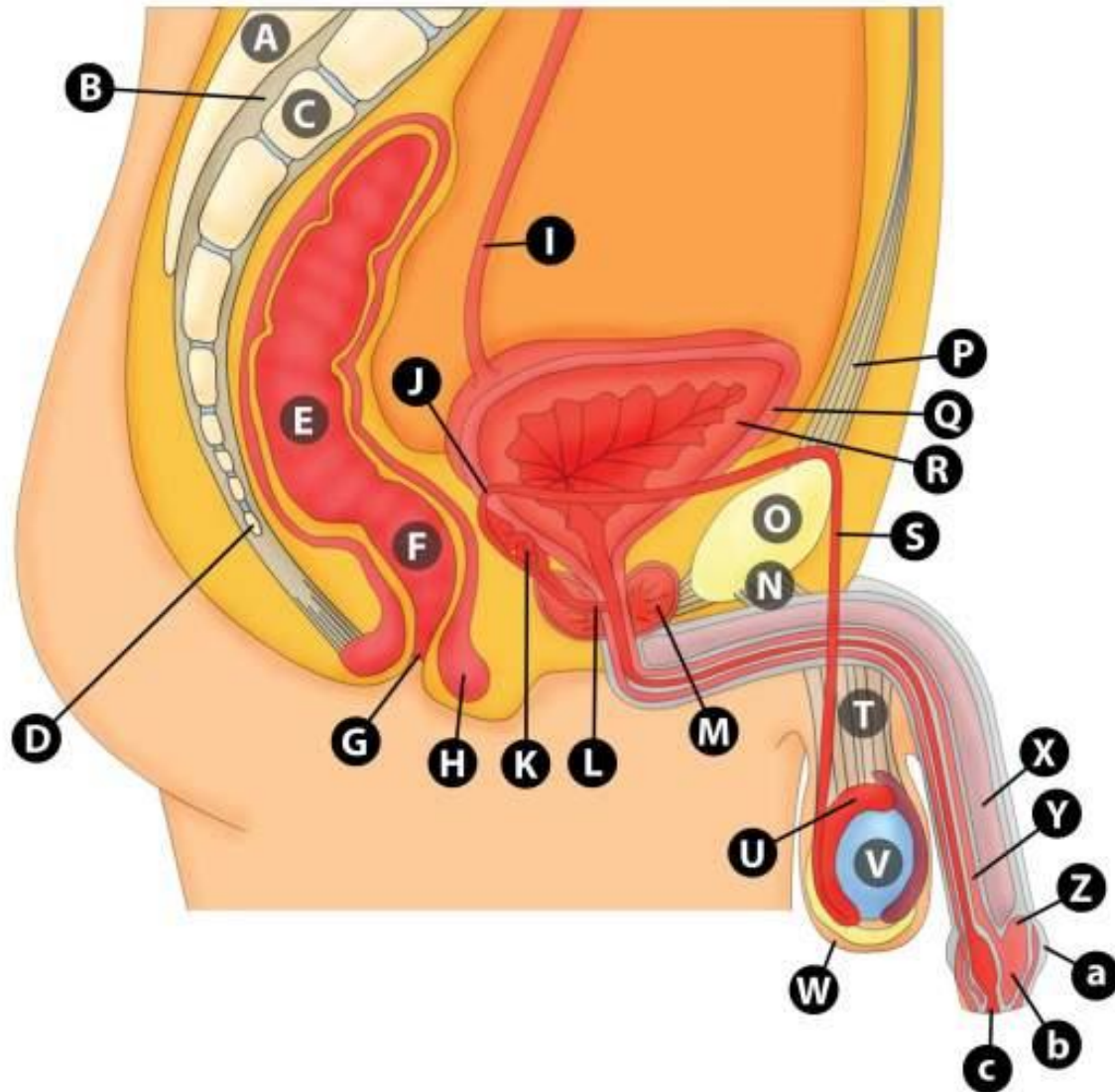
The background of the slide is a light gray gradient with several realistic water droplets of various sizes scattered across it. The droplets have highlights and shadows, giving them a three-dimensional appearance.

THE MALE AND FEMALE GENITOURINARY SYSTEMS

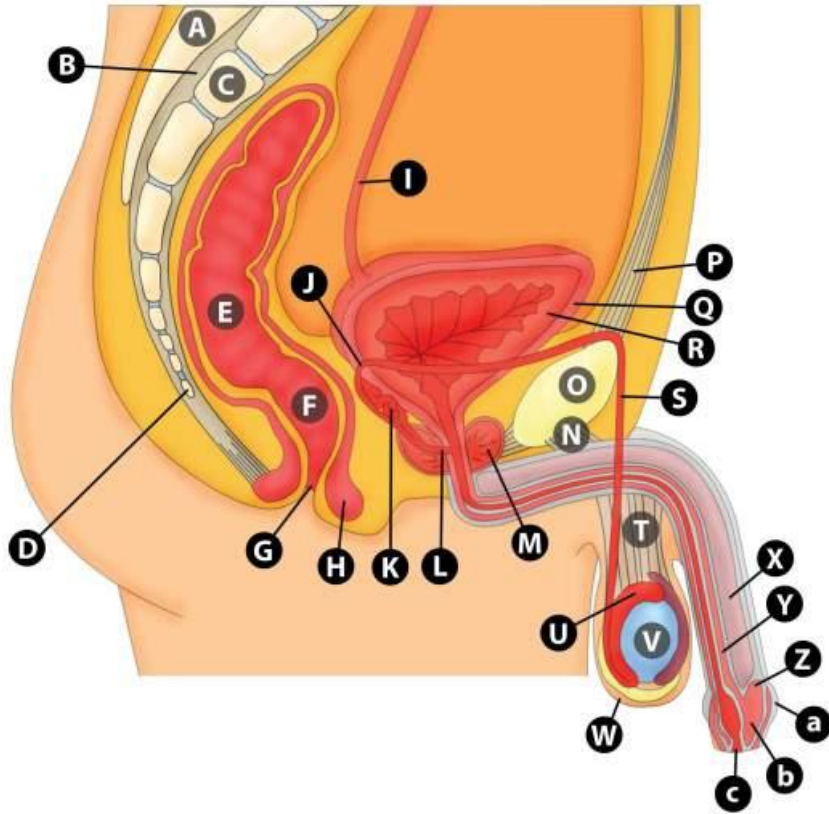
- IDENTIFY ALL THE LABELS ON THE FOLLOWING
IMAGE

Male reproductive system



MALE REPRODUCTIVE SYSTEM

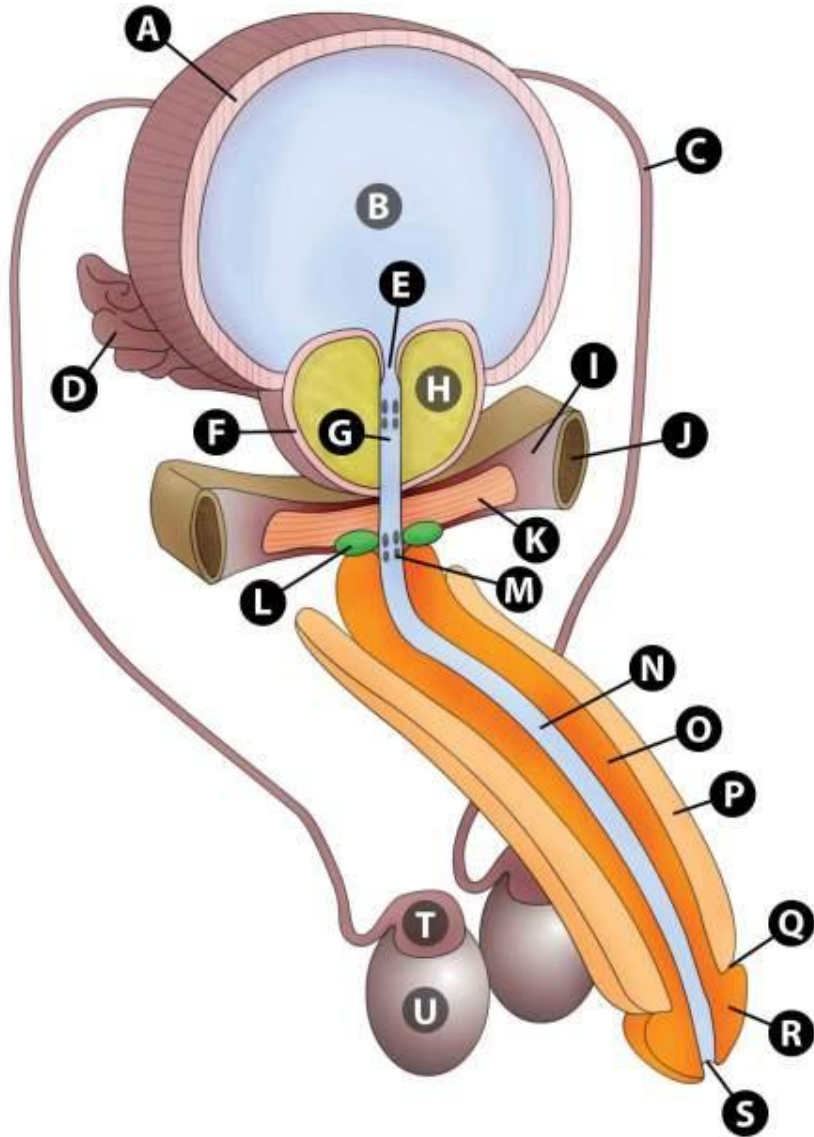
Male reproductive system



- | | | | |
|----|----------------------------------|-----|---------------------------------|
| A. | SACRAL SPINOUS PROCESS | Q. | RECTUS ABDOMINIS MUSCLE/LINEA A |
| B. | SACRAL CANAL | R. | TUNICA ADVENTITIA |
| C. | SACRAL VERTEBRAL BODIES | S. | MUCOSA |
| D. | COCCYX | T. | DUCTUS (VAS) DEFERENCE |
| E. | SIGMOID | U. | SPERMATIC CORD |
| F. | RECTUM | V. | EPIDIDYMIS |
| G. | ANUS | W. | TESTES |
| H. | RECTOUTERINE POUCH | X. | SCROTUM |
| I. | URETER | Y. | CORPUS CAVENOSUM |
| J. | DUCTUS (VAS) DEFERENCE | Z. | CORPUS SPANGIOSUM |
| K. | SEMINAR VESICLE | AA. | CORONA |
| L. | EJACULATORY DUCT | BB. | PREPUCE |
| M. | PROSTATE | CC. | GLANS PENIS |
| N. | CENTRAL TENDON OF PERINEUM | DD. | EXTERNAL URETHRAL MEATUS |
| O. | SUSPENSORY LIGAMENT OF THE PENIS | | |
| P. | SYMPHYSIS PUBIS | | |

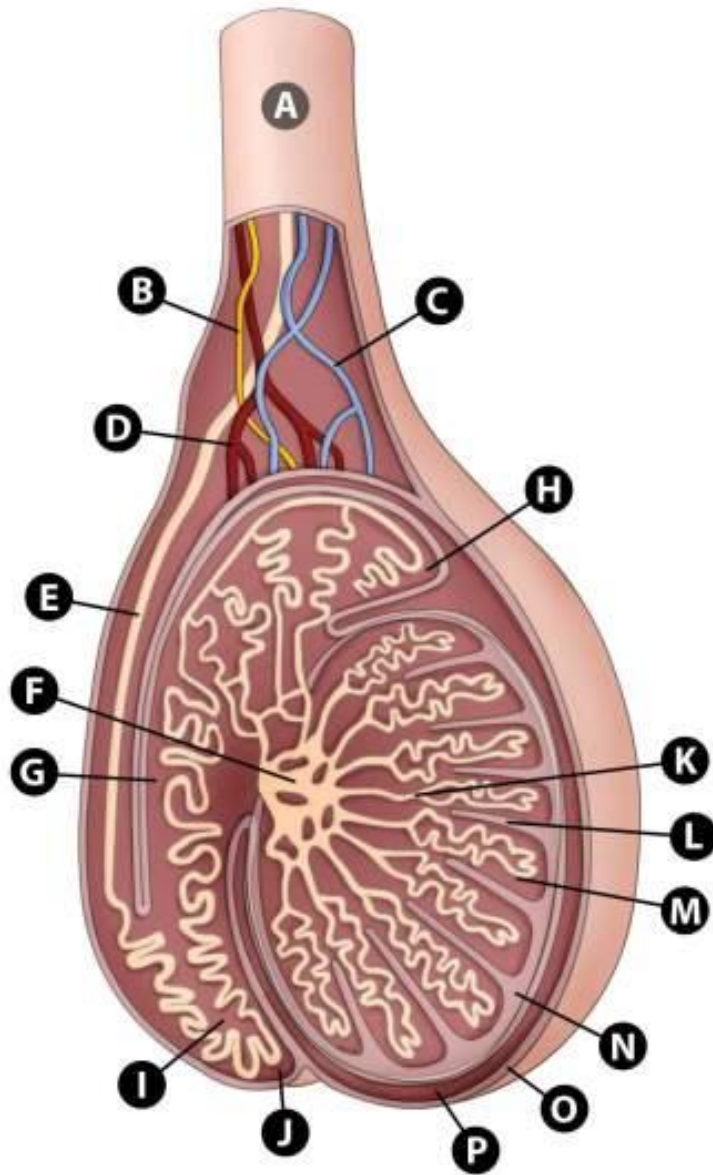
THE MALE GENITALIA

Male accessory organs



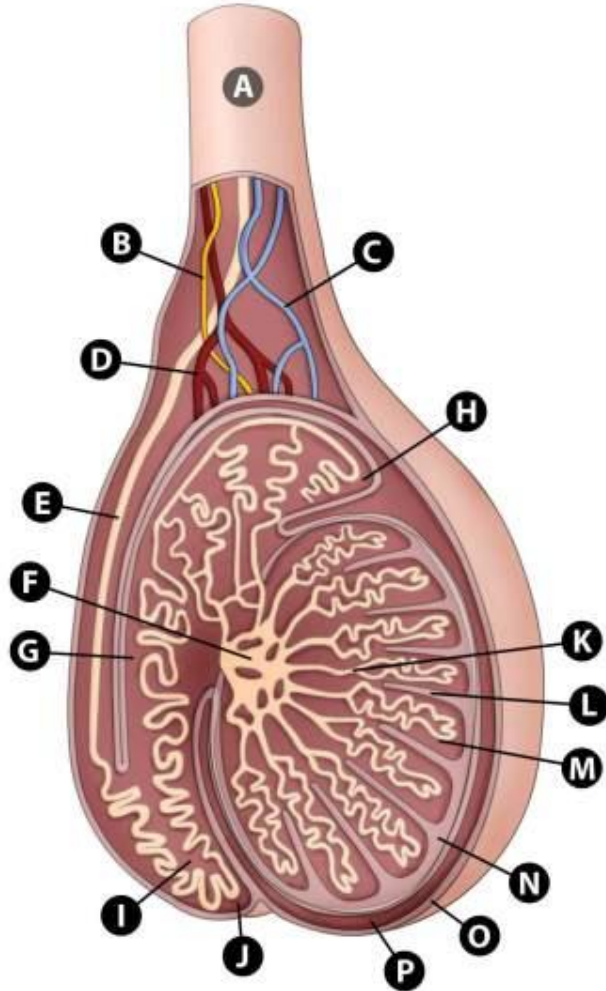
- A. DETRUSOR MUSCLE OF THE BLADDER
- B. URINARY BLADDER
- C. DUCTUS (VAS) DEFERENCE
- D. SEMINAR VESICLE
- E. NECK OF URINARY BLADDER
- F. CAPSULE OF THE PROSTATE
- G. PROSTATIC URETHRA
- H. PROSTATE
- I. PUBIC BONE
- J. PUBIC BONE
- K. UROGENITAL DIAPHRAGM
- L. BULBOURETHRAL GLAND(COWPER'S)
- M. MEMRANOUS URETHRA
- N. PENILE URETHRA
- O. CORPORA SPONGIOSUM
- P. CORPORA CAVENOSA
- Q. CORONA OF THE PENIS
- R. GLANS OF THE PENIS
- S. EXTERNAL URETHRAL MEATUS

Testes



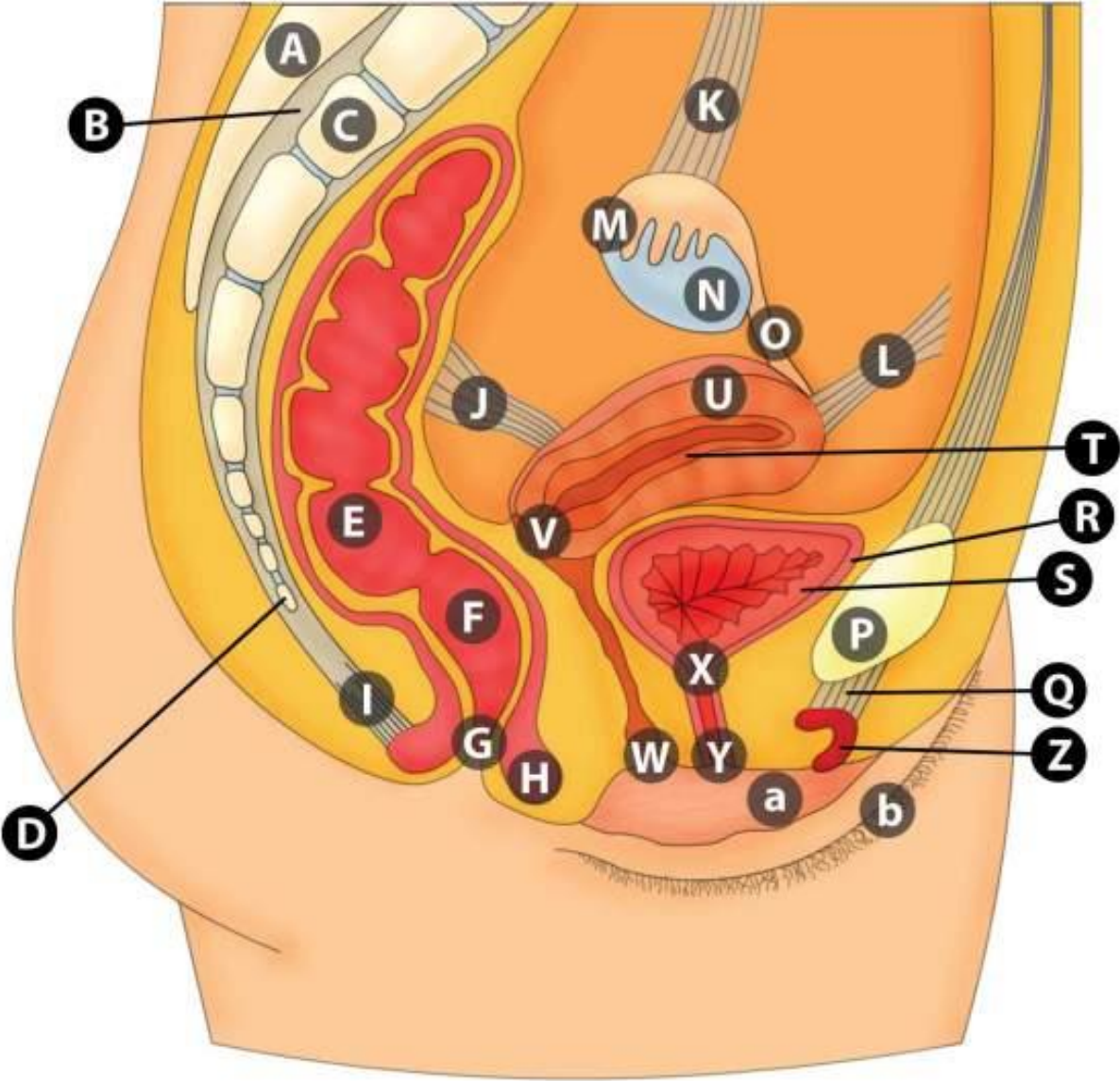
THE TESTES

Testes



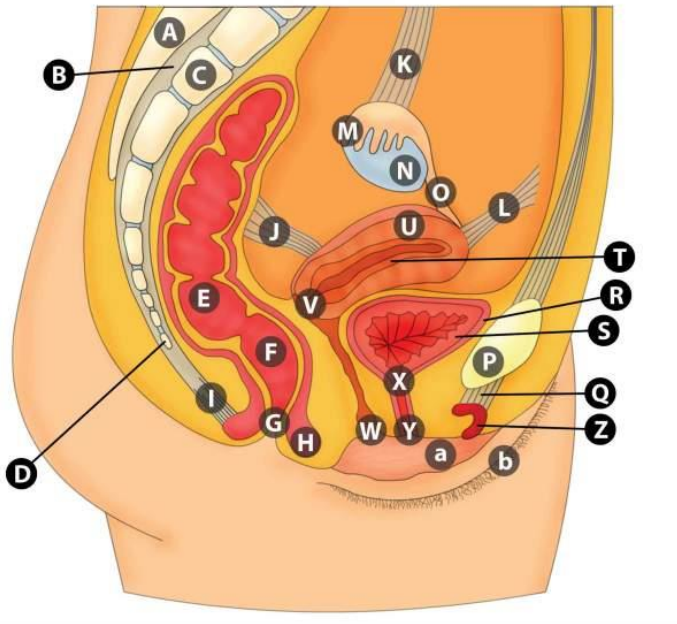
- A. SPERMATIC CORD
- B. AUTONOMIC NERVES
- C. SPERMATIC VEINS
- D. SPERMATIC ARTERIES
- E. DUCTUS (VAS) DEFERENCE
- F. RETE TESTIS
- G. BODY OF EPIDIDYMIS
- H. HEAD OF EPIDIDYMIS
- I. DUCTUS EPIDIDYMIS
- J. TAIL OF EPIDIDYMIS
- K. STRAIGHT TUBULES
- L. SEPTUM
- M. LOBULE
- N. TUNICA ALBUGINEA
- O. TUNICA VAGINALIS
- P. TUNICA VAGINALIS

Female reproductive system



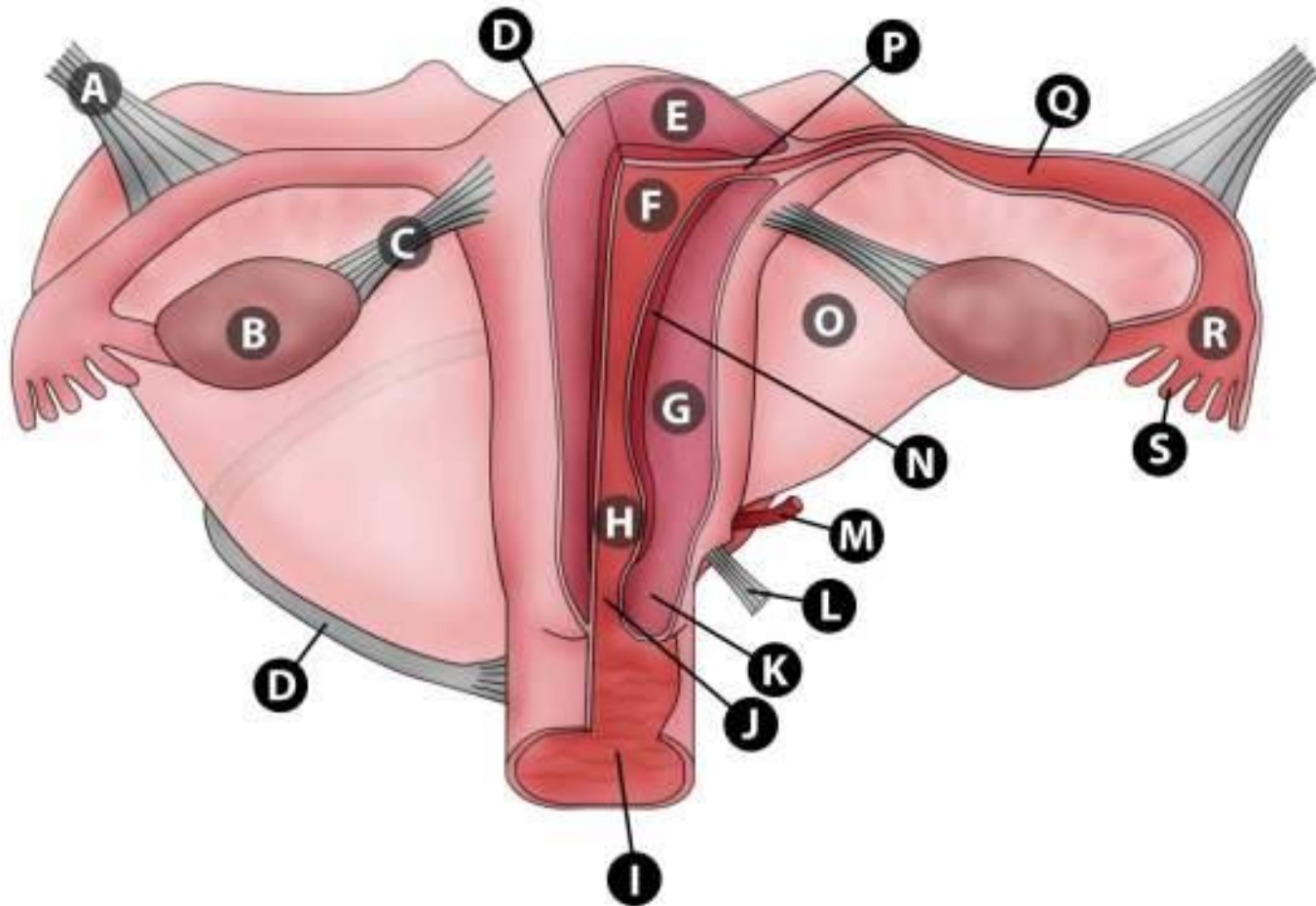
FEMALE REPRODUCTIVE SYSTEM

Female reproductive system



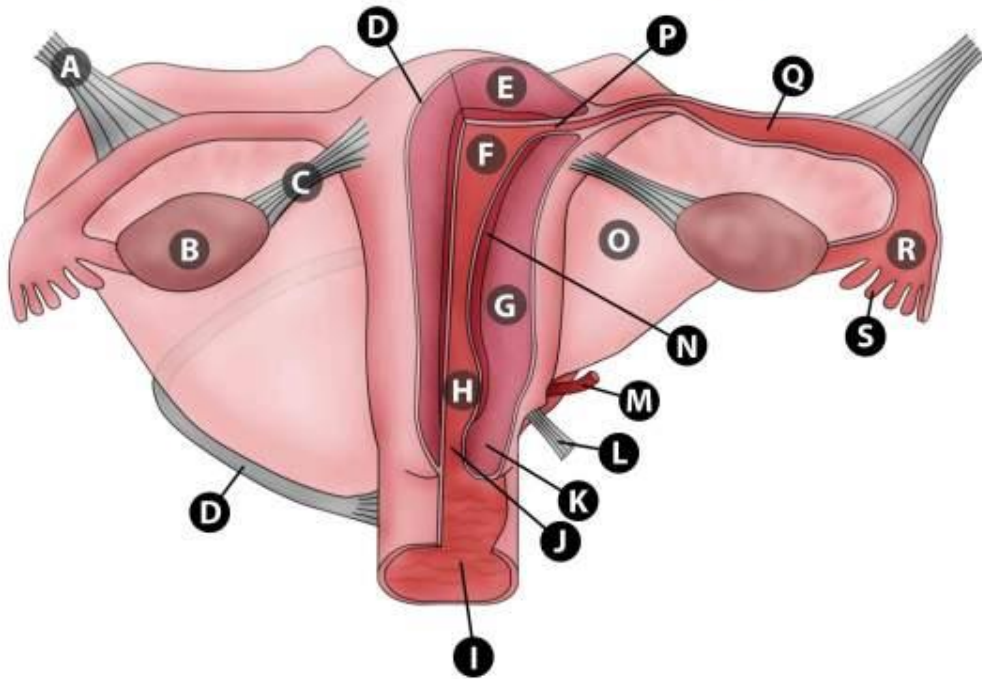
- | | | | |
|----|------------------------------|-----|--------------------------------------|
| A. | SPINE OF THE SACRUM | S. | DETRUSOR MUSCLE / MUCOSA |
| B. | SACRAL CANAL | T. | BODY OF UTERUS |
| C. | SACRAL BODIES | U. | HEAD OF THE UTERUS |
| D. | COCCYX | V. | CERVIX |
| E. | SIGMOID | W. | VAGINA |
| F. | RECTUM | X. | NECK OF THE BLADDER / INT. SPHINCTER |
| G. | ANUS | Y. | EXTERNAL URETHRAL ORIFICE |
| H. | RECTOUTERINE POUCH (DOUGLAS) | Z. | CLITORIS |
| I. | PELVIC DIAPHRAGM | AA. | LABIUM MINORUM |
| J. | UTEROSACRAL LIGAMENT | BB. | LABIUM MAJORUM |
| K. | OVARIAN LIGAMENT | | |
| L. | ROUND LIGAMENT | | |
| M. | FIMBRIAE OF SALPYNX | | |
| N. | OVARY | | |
| O. | FALLOPIAN/UTERINE TUBE | | |
| P. | SYMPHYSIS PUBIS | | |
| Q. | LIGAMENT | | |
| R. | TUNICA ADVENTITIA | | |

Female accessory organs



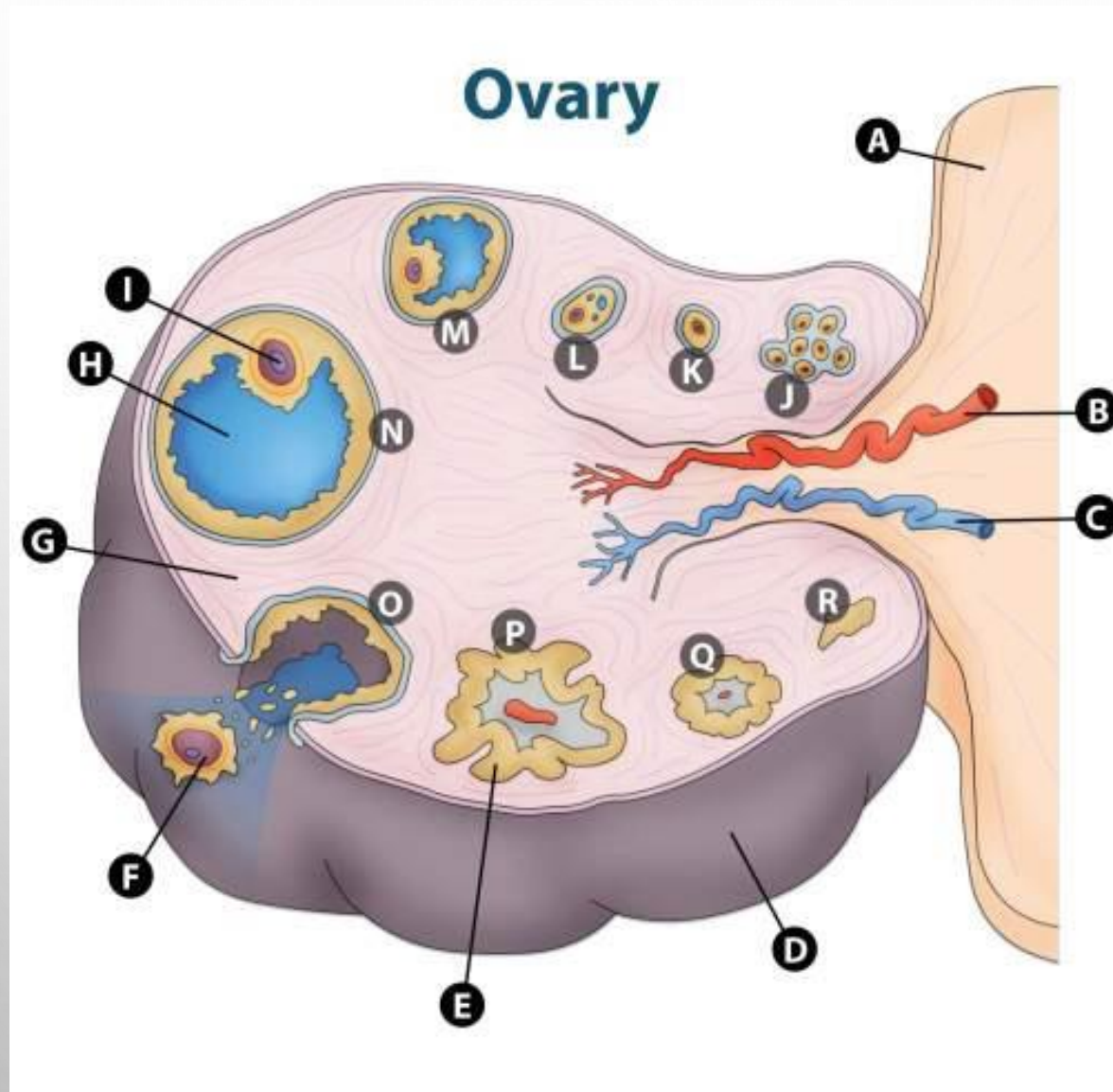
THE UTERUS AND OVARIES

Female accessory organs

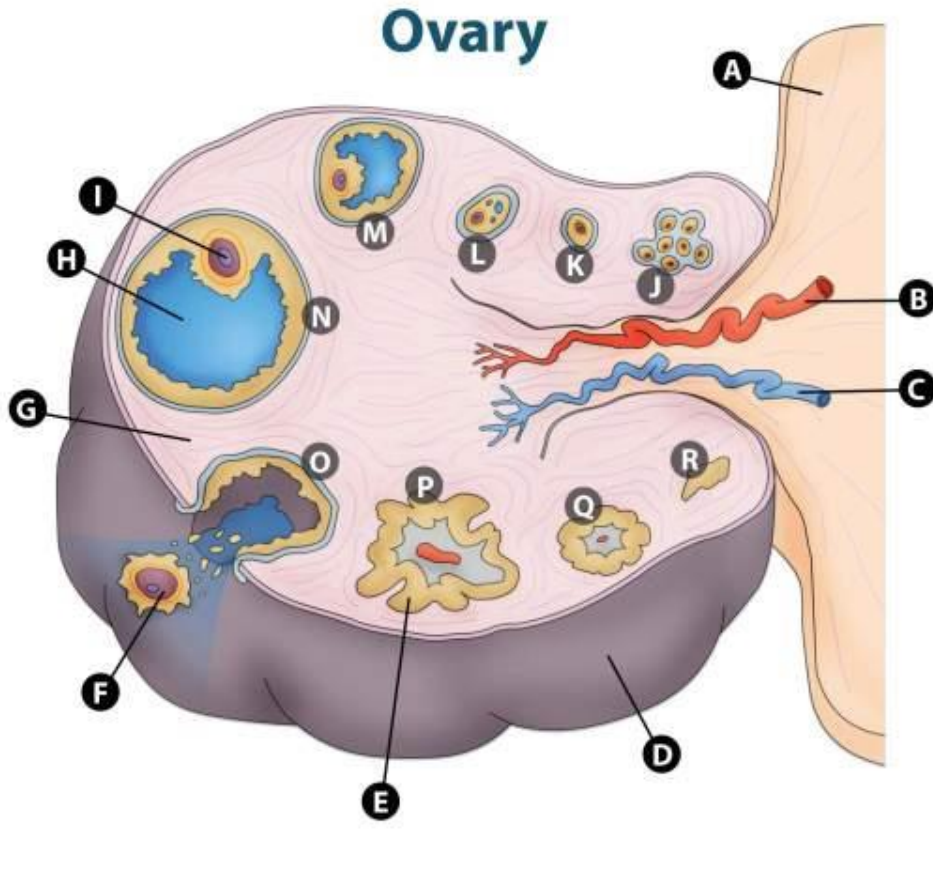


- A. SUSPENSORY LIGAMENT
- B. OVARY
- C. OVARIAN LIGAMENT
- D. PERIMETRIUM
- E. FUNDUS OF UTERUS
- F. UTERINE CAVITY
- G. BODY OF THE UTERUS
- H. INTERNAL OS OF THE CERVIX
- I. VAGINA
- J. EXTERNAL OS OF THE CERVIX
- K. CERVIX
- L. UTEROSACRAL LIGAMENT
- M. URETER
- N. ENDOMETRIUM
- O. BROAD LIGAMENT
- P. ISTHMUS OF UTERINE TUBE
- Q. AMPULLA OF UTERINE TUBE
- R. INFUNDIBULUM OF UTERINE TUBE
- S. FIMBRIAE

THE OVARY



THE OVARY



- A. BROAD LIGAMENT
- B. OVARIAN ARTERY
- C. OVARIAN VEIN
- D. GERMINAL EPITHELIUM
- E. GRANULOSA CELLS OF CORPUS LUTEUM
- F. SECONDARY OOCYTE
- G. OVARIAN CORTEX
- H. ANTRUM WITH FOLLICULAR FLUID
- I. GRAAFIAN FOLLICLES
- J. PRIMARY FOLLICLES
- K. OOCYTE
- L. OOCYTE
- M. SECONDARY FOLLICLE
- N. MATURE FOLLICLE (GRANULOSA CELLS)
- O. OVULATION STAGE
- P. FORMATION OF CORPUS LUTEUM
- Q. MATURE CORPUS LUTEUM
- R. CORPUS ALBICANS

The image features a light gray background with several realistic water droplets of various sizes scattered across it. The droplets are rendered with soft shadows and highlights, giving them a three-dimensional appearance. In the center of the image, the word "END" is written in a bold, black, sans-serif font.

END