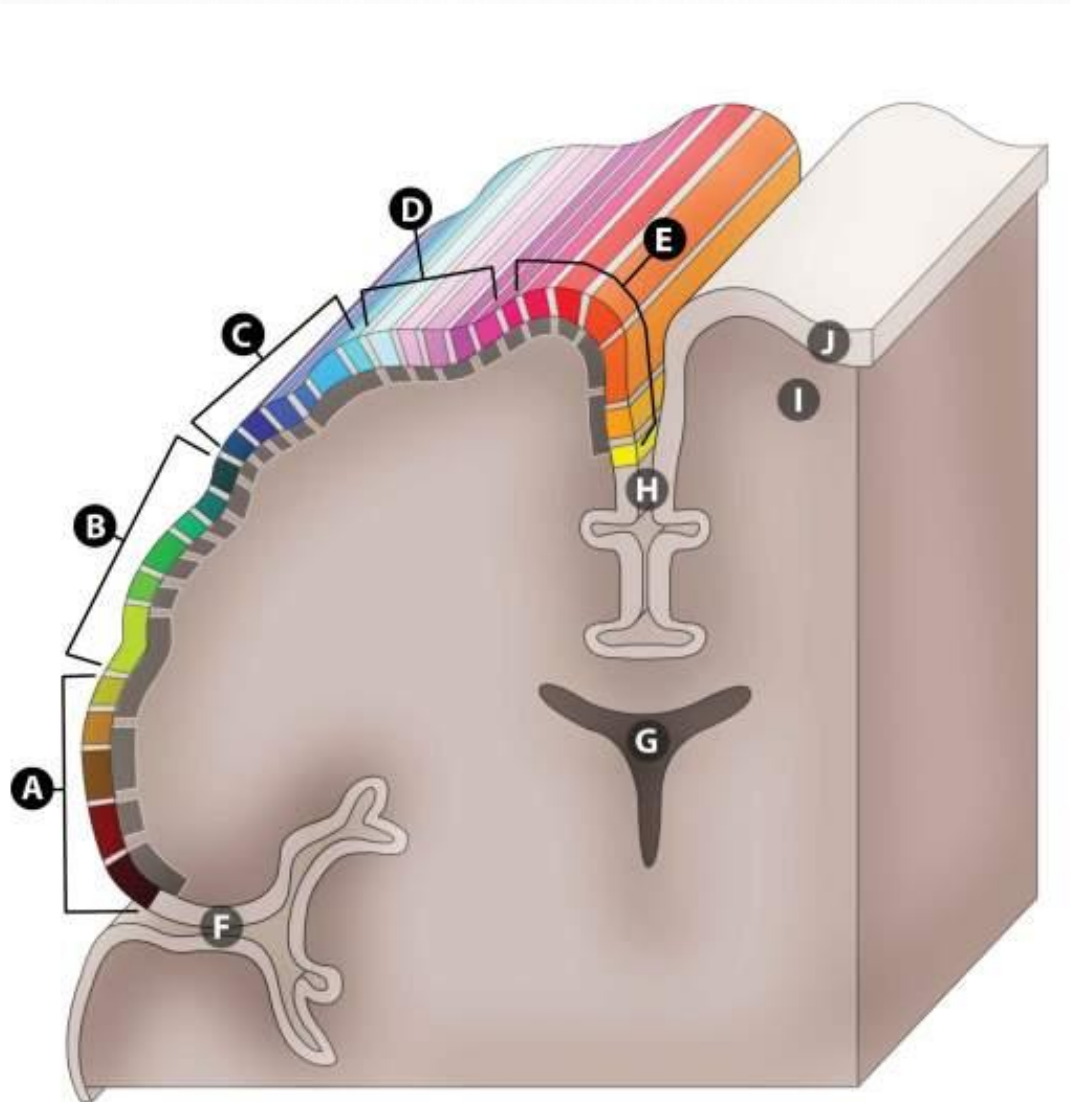


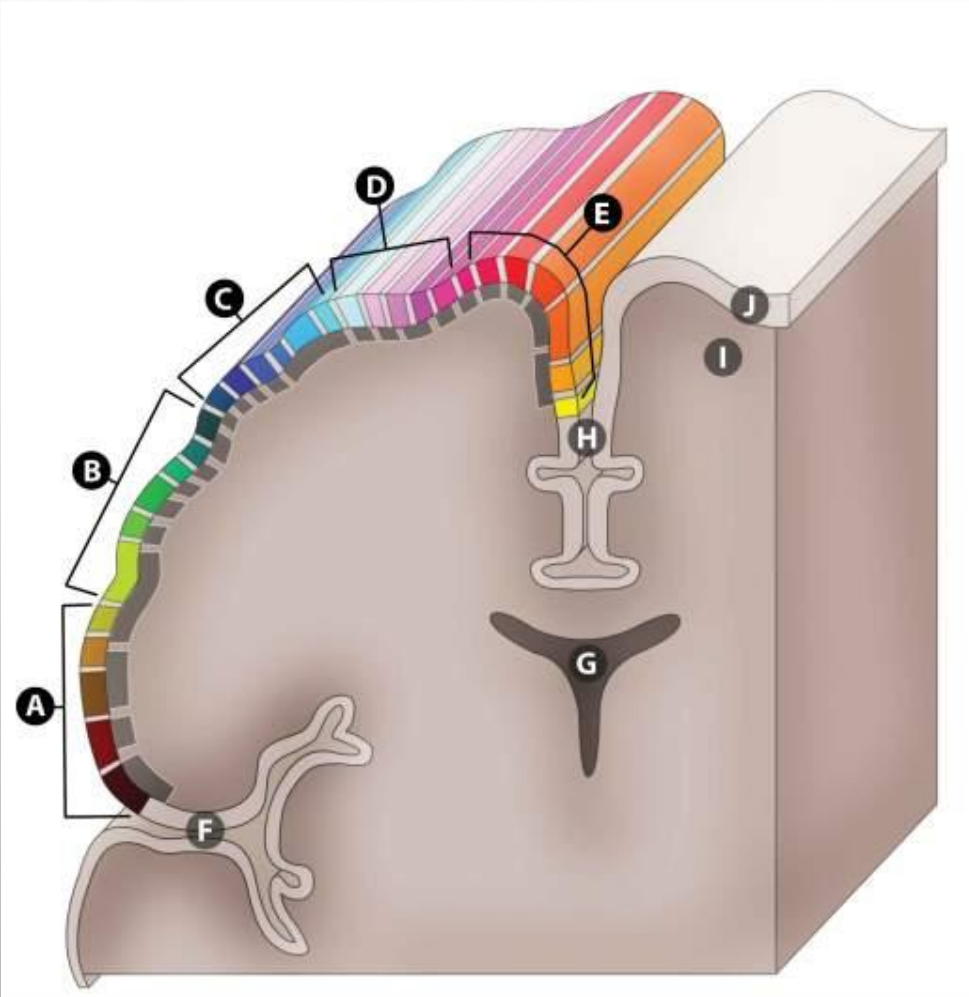
# THE STRUCTURE OF THE NERVOUS SYSTEM

- IDENTIFY ALL THE LABELS ON THE FOLLOWING IMAGES

# PRIMARY SOMATOMOTOR CORTEX (PRECENTRAL GYRUS)

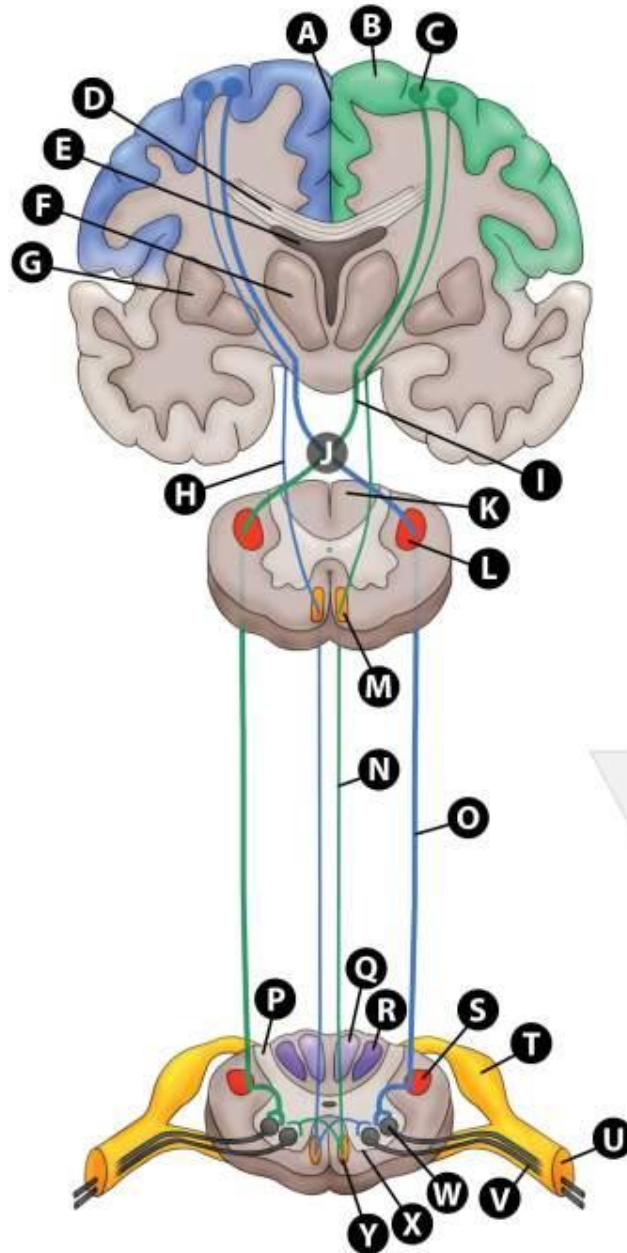


# PRIMARY SOMATOMOTOR CORTEX (PRECENTRAL GYRUS)

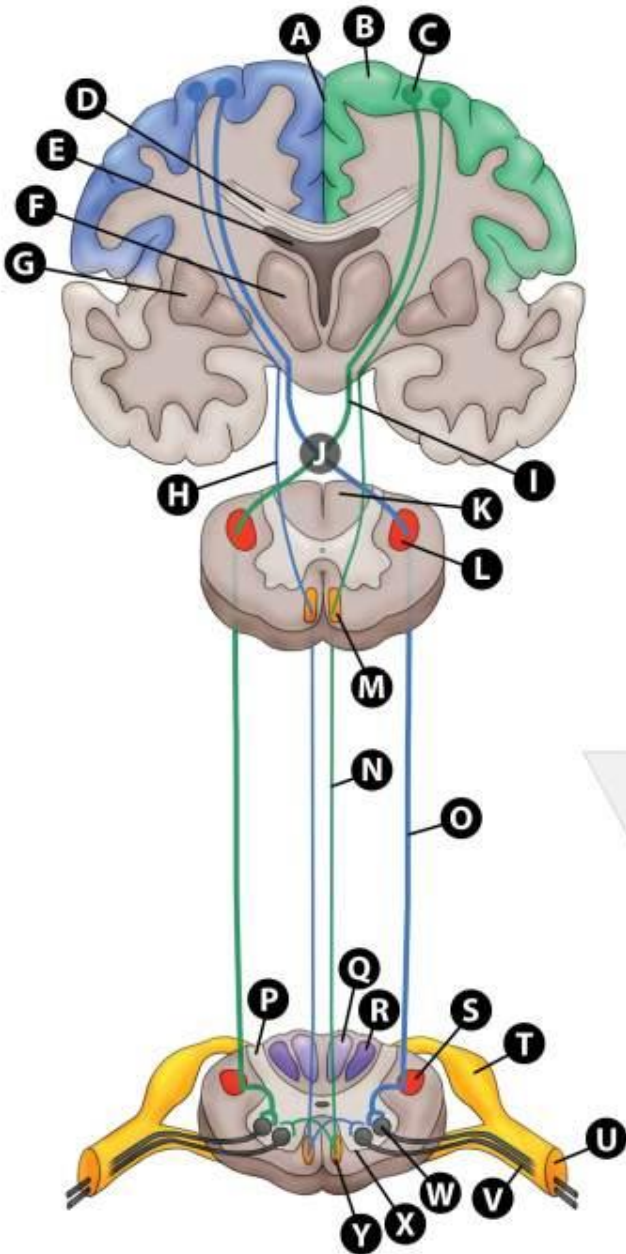


- A. LARYNX AREA
- B. FACE
- C. HAND
- D. ARMS, TRUNK AND GENITALS
- E. PELVIS AND LEG
- F. LATERAL SULCUS
- G. 3<sup>RD</sup> VENTRICLE OR FORNIX
- H. FALX CEREBRI / LONGITUDINAL FISSURE
- I. WHITE MATTER
- J. GRAY MATTER

# Corticospinal tracts



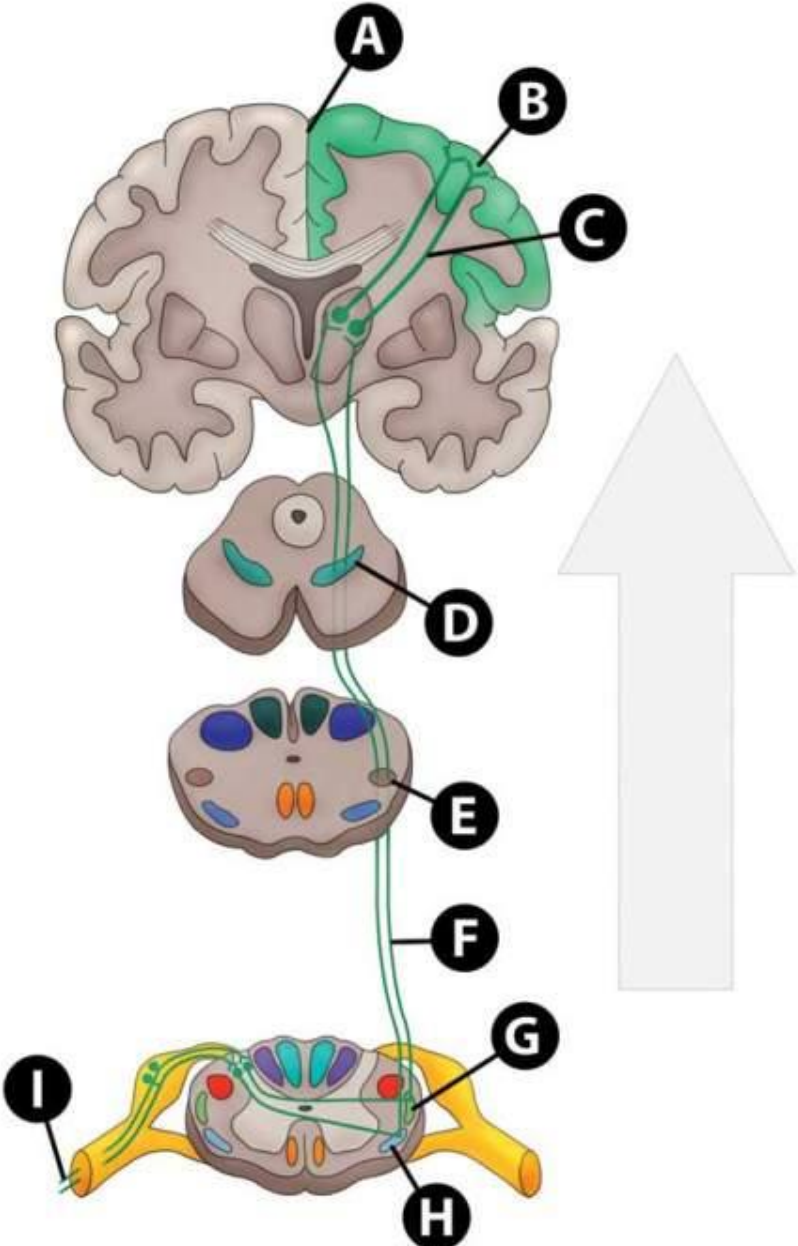
# Corticospinal tracts



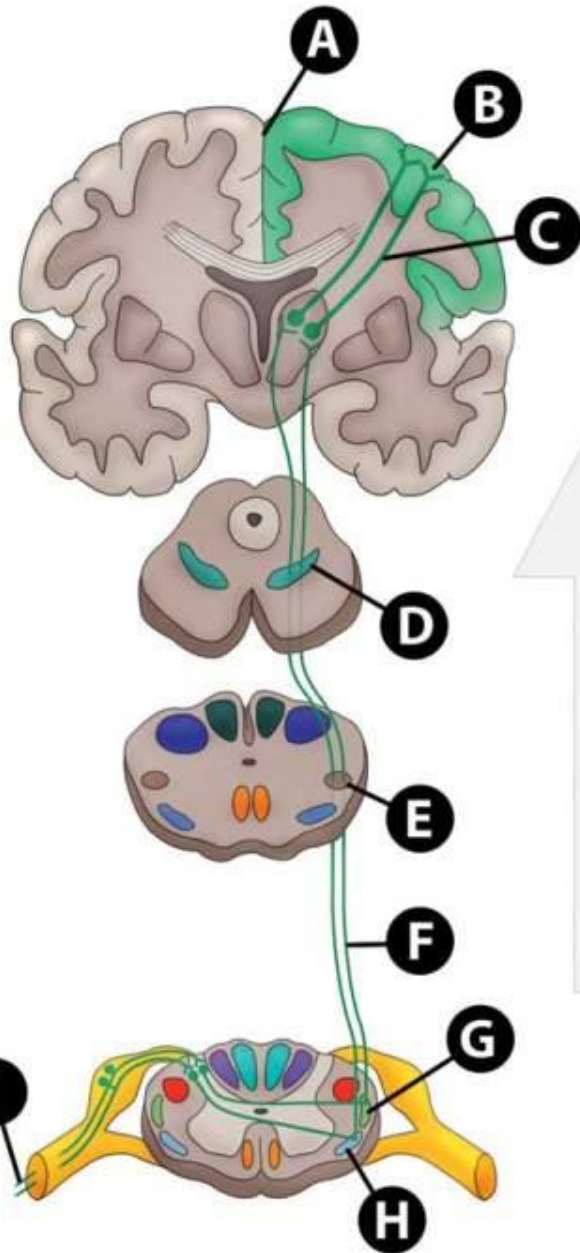
- A. LONGITUDINAL FISSURE
- B. MOTOR CORTEX / PRECENTRAL/ LSOMATOMOTOR AREA
- C. SOMATIC MOTOR NEURONE
- D. CORPUS CALLOSUM
- E. LATERAL VENTRICLE
- F. THALAMUS
- G. LENTIFORM NUCLEUS
- H. ANTERIOR CORTICOSPINAL TRACT (UPPER MOTOR NEURONE)
- I. LATERAL CORTICOSPINAL TRACT (UPPER MOTOR NEURONE)
- J. DECUSSATION OF THE CORTICOSPINAL TRACTS / PYRAMIDS
- K. POSTERIOR COLUMNS
- L. LATERAL CORTICOSPINAL TRACTS
- M. ANTERIOR CORTICOSPINAL TRACTS
- N. ANTERIOR CORTICOSPINAL TRACTS (AXONS OF THE UPPER M.NS.)
- O. LATERAL CORTICOSPINAL TRACTS (AXONS OF THE UPPER M.NS.)
- P. POSTERIOR GRAY HORNS
- Q. FASCICULUS GRACILIS
- R. FASCICULUS CUNEATUS
- S. LATERAL CORTICOSPINAL TRACTS
- T. DORSAL ROOT GANGLION
- U. SPINAL NERVE
- V. AXONS OF LOWER MOTOR NEURONES
- W. LOWER MOTOR NEURONES CELL BODIES
- X. ANTERIOR GRAY HORN
- Y. ANTERIOR CORTICOSPINAL TRACT



# SPINOTHALAMIC TRACTS

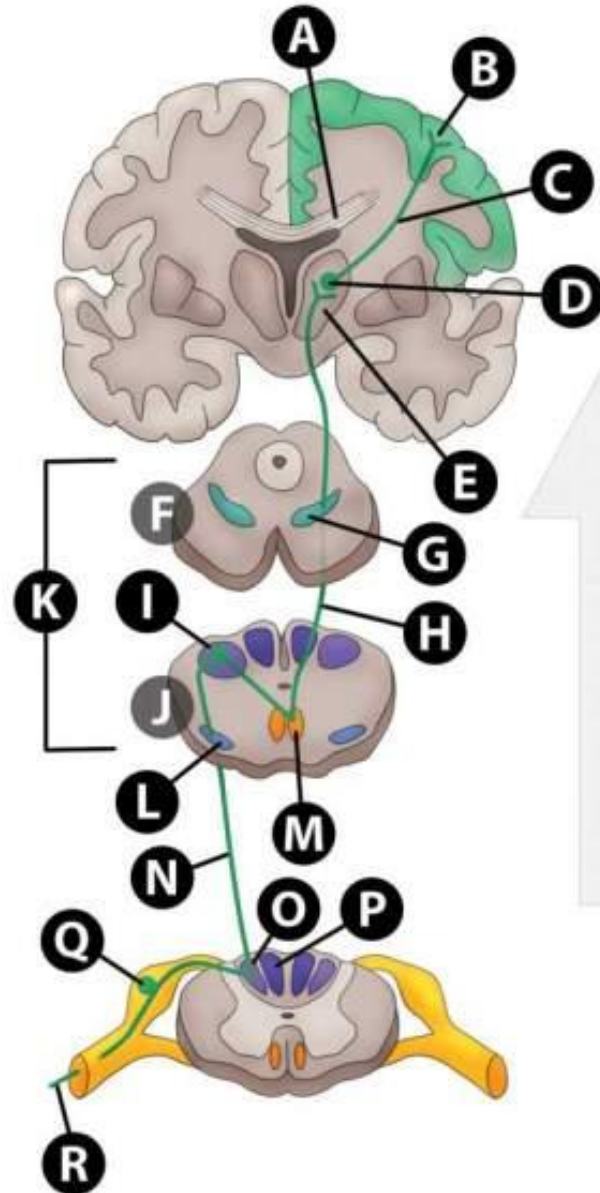


# SPINOTHALAMIC TRACTS



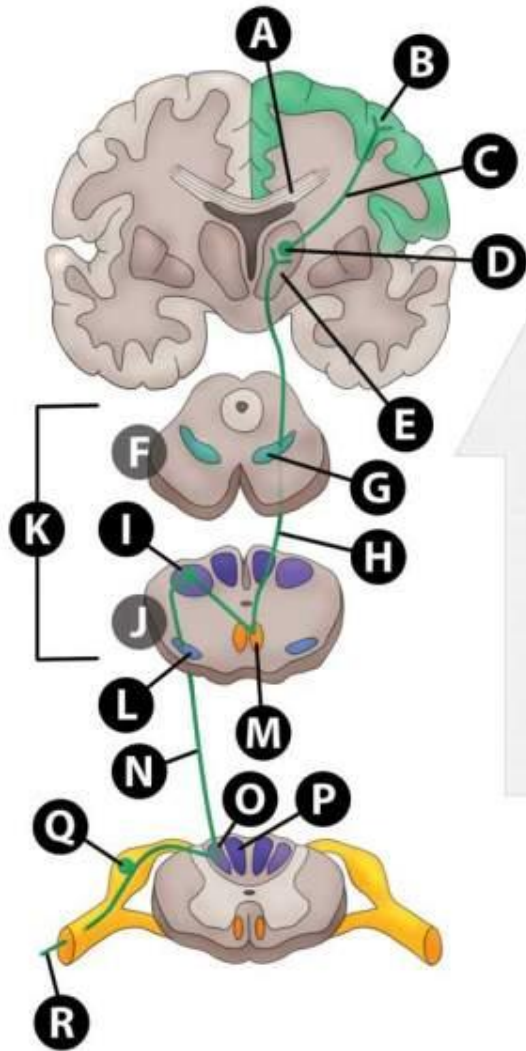
- A. LONGITUDINAL FISSURE
- B. PRIMARY SOMATOSENSORY CORTEX (DENDRONS AND SYNAPSES OF THE 3<sup>RD</sup> ORDER NEURONES)
- C. DENDRONS OF THE 1<sup>ST</sup> ORDER SOMATOSENSORY NEURONES)
- D. MEDIAL LEMNISCUS
- E. SPINOTHALAMIC TRACTS IN THE MEDULLA (2<sup>ND</sup> ORDER NEURONES
- F. SPINOTHALAMIC TRACTS (2<sup>ND</sup> ORDER NEURONES
- G. ANTERIOR SPINOTHALAMIC TRACTS (IN SPINAL CORD)
- H. LATERAL SPINOTHALAMIC TRACTS (IN SPINAL CORD)
- I. SPINOTHALAMIC DENDRONS WITHIN MIXED SPINAL NERVE (1<sup>ST</sup> ORDER NEURONES)

# POSTERIOR COLUMNS



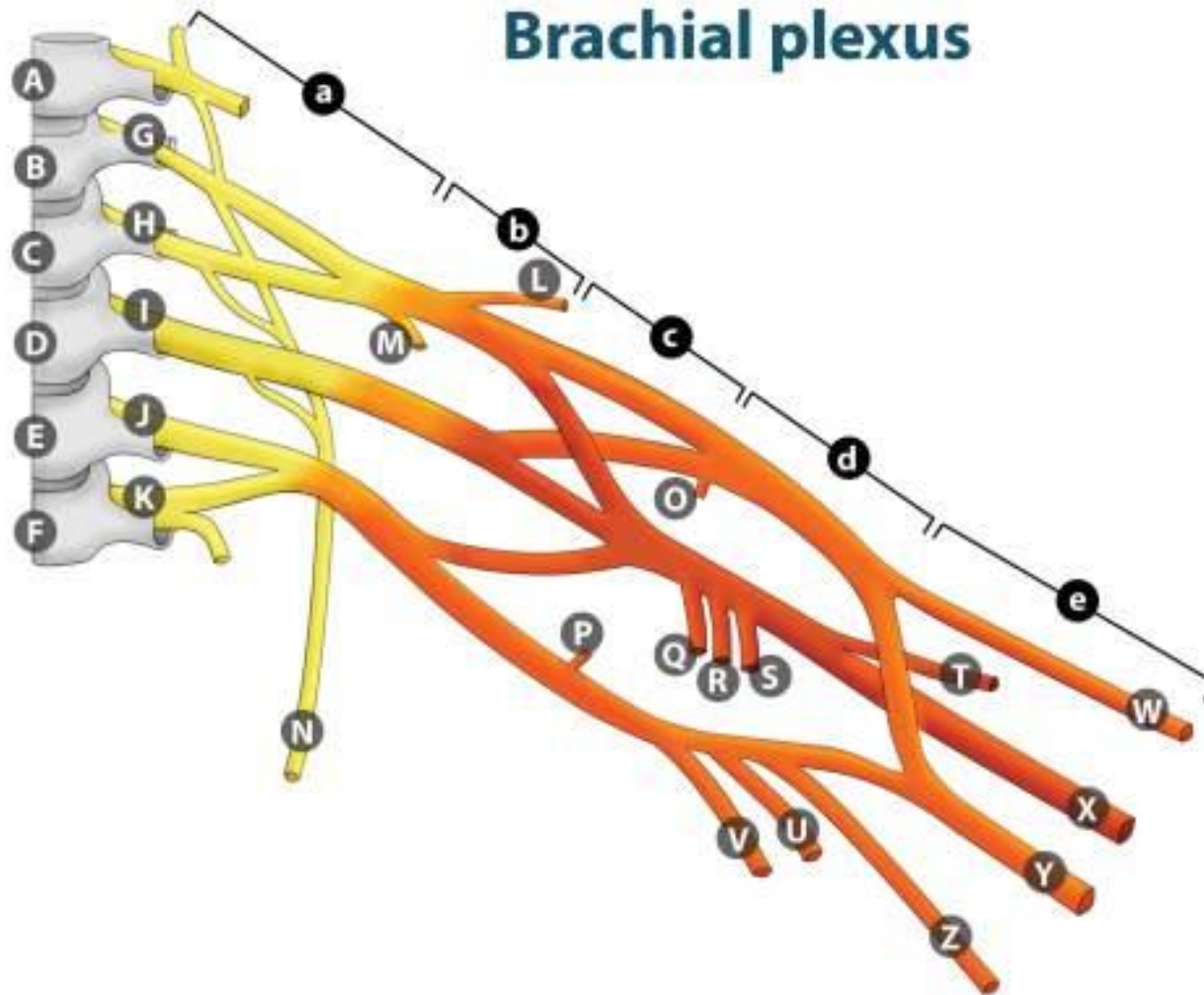


# POSTERIOR COLUMNS

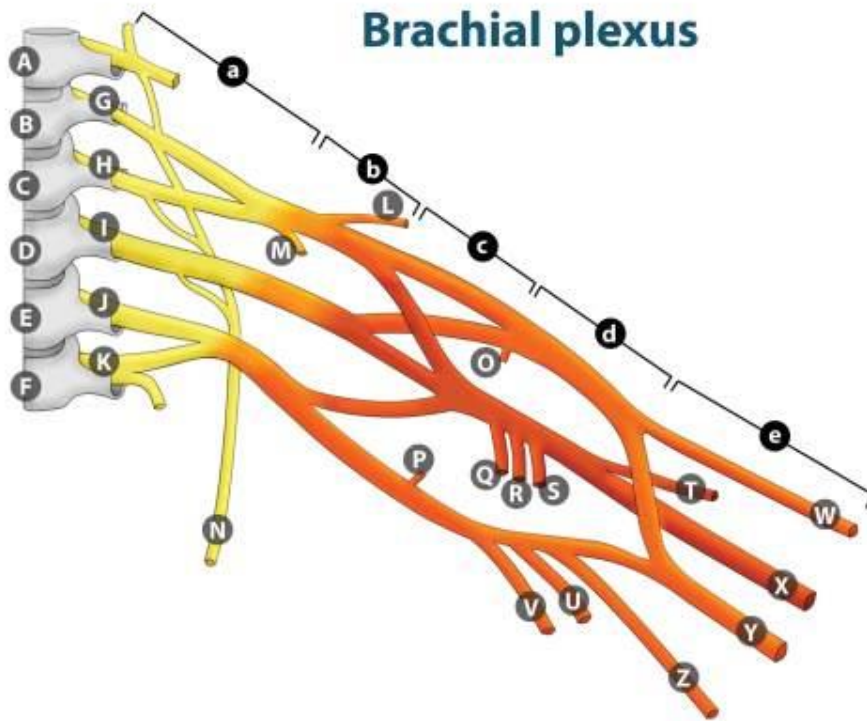


- A. CORPUS CALLOSUM
- B. SYNAPSES OF THE 3<sup>RD</sup> ORDER NEURONES IN PRIMARY SOMATOSENSORY AREA
- C. DENDRONS OF THE 3<sup>RD</sup> ORDER NEURONES
- D. CELL BODY OF THE 3<sup>RD</sup> ORDER NEURONE
- E. THALAMUS
- F. MIDBRAIN
- G. MEDIAL LEMNISCUS
- H. DENDRON OF THE 2<sup>ND</sup> ORDER NEURONES
- I. NUCLEUS CUNEATUS
- J. NUCLEUS GRACILIS
- K. MEDULLA OBLONGATA
- L. DECUSSATION OF THE MEDIAL LEMNISCUS (INTERNAL ARCUATE FIBRES)
- M. FASCICULUS CUNEATUS IN MEDULLA
- N. AXON OF THE 1<sup>ST</sup> ORDER NEURONE
- O. FASCICULUS CUNEATUS IN SPINAL CORD
- P. FACICULUS GRACILIS IN SPINAL CORD
- Q. CELL BODY OF 1<sup>ST</sup> ORDER NEURONE IN DORSAL ROOT GANGLION
- R. DENDRON OF THE 1<sup>ST</sup> ORDER NEURONE

# BRACHIAL PLEXUS



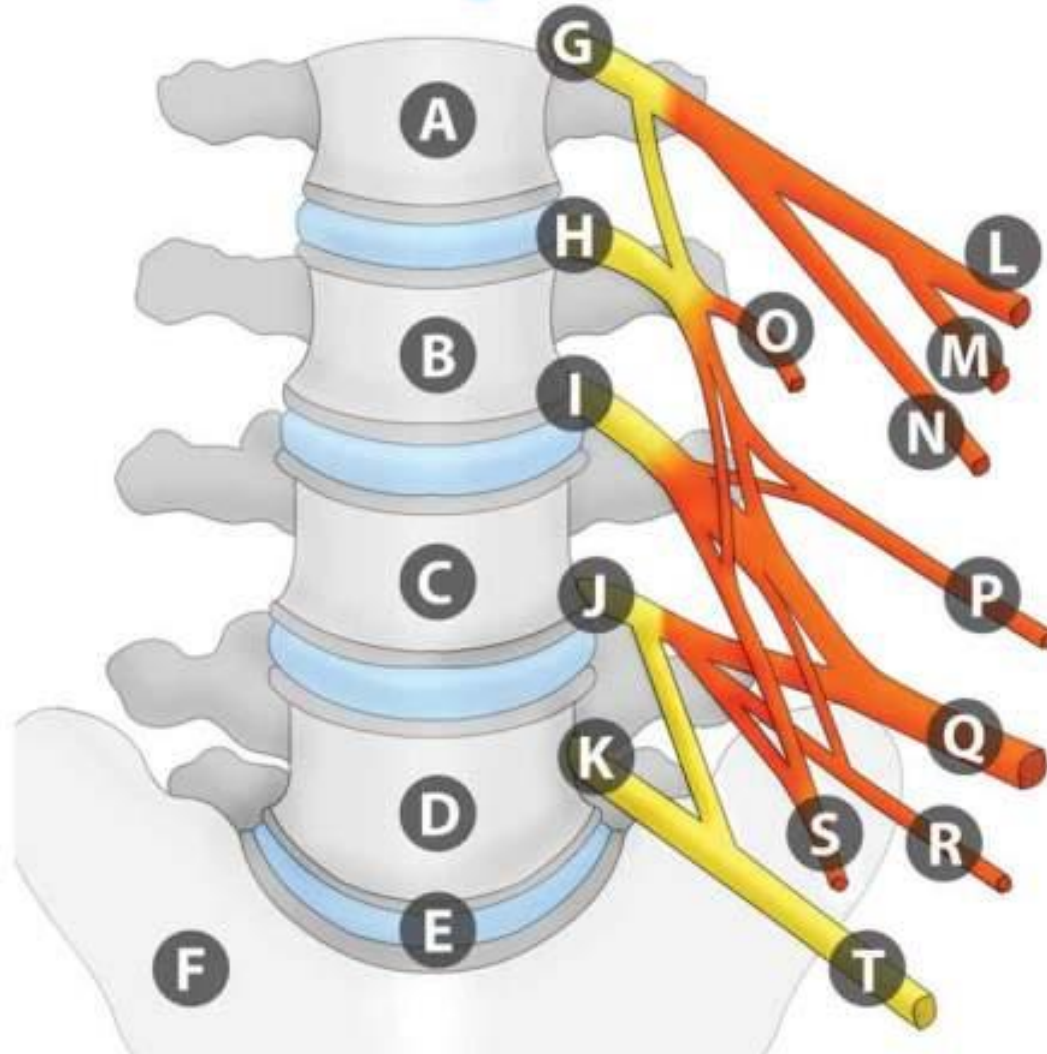
# BRACHIAL PLEXUS



- a. Roots
- b. Cords
- c. Branches
- d. Trunks
- e. Divisions

- A. C4 VERTEBRA
- B. C5 VERTEBRA
- C. C6 VERTEBRA
- D. C7 VERTEBRA
- E. T1 VERTEBRA
- F. T2 VERTEBRA
- G. C5 NERVE ROOT
- H. C6 NERVE ROOT
- I. C7 NERVE ROOT
- J. C8 NERVE ROOT
- K. T1 NERVE ROOT
- L. SUPRASCAPULAR NERVE
- M. NERVE TO SUBCLAVIUS
- N. LONG THORACIC NERVE
- O. LATERAL PECTORAL NERVE
- P. MEDIAL PECTORAL NERVE
- Q. UPPER SCAPULAR NERVE
- R. THORACODORSAL NERVE
- S. LOWER SCAPULAR NERVE
- T. AXILLARY
- U. MEDIAL ANTEBRACHIAL CUTANEOUS N.
- V. MEDIAL BRACHIAL CUTANEOUS N.
- W. MUSCULOCUTANEOUS N.
- X. RADIAL N.
- Y. MEDIAN N.
- Z. ULNAR N.

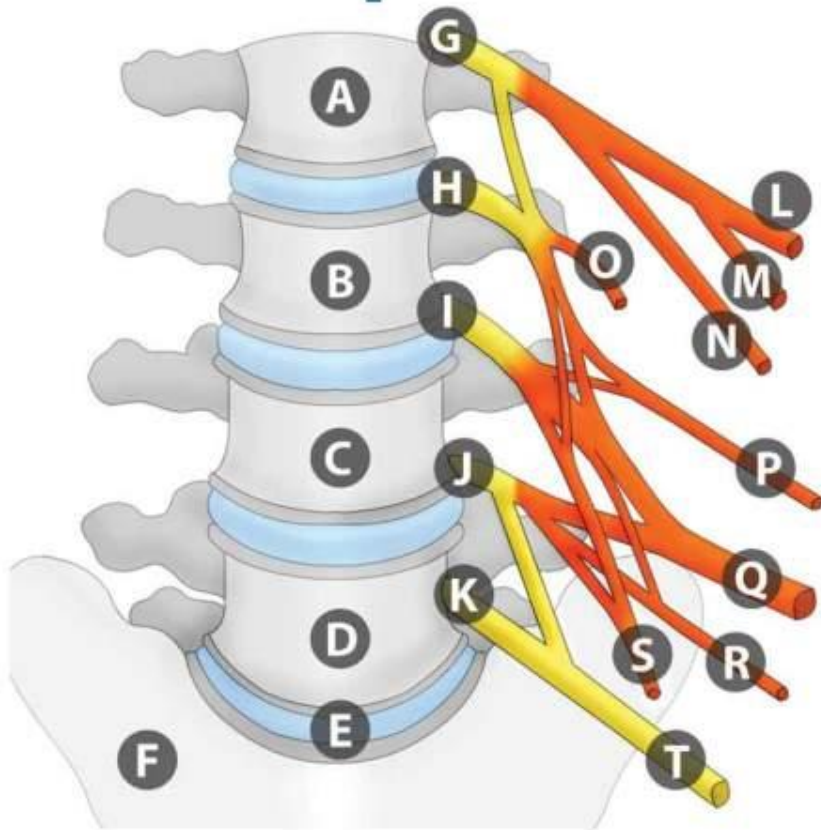
# Lumbar plexus





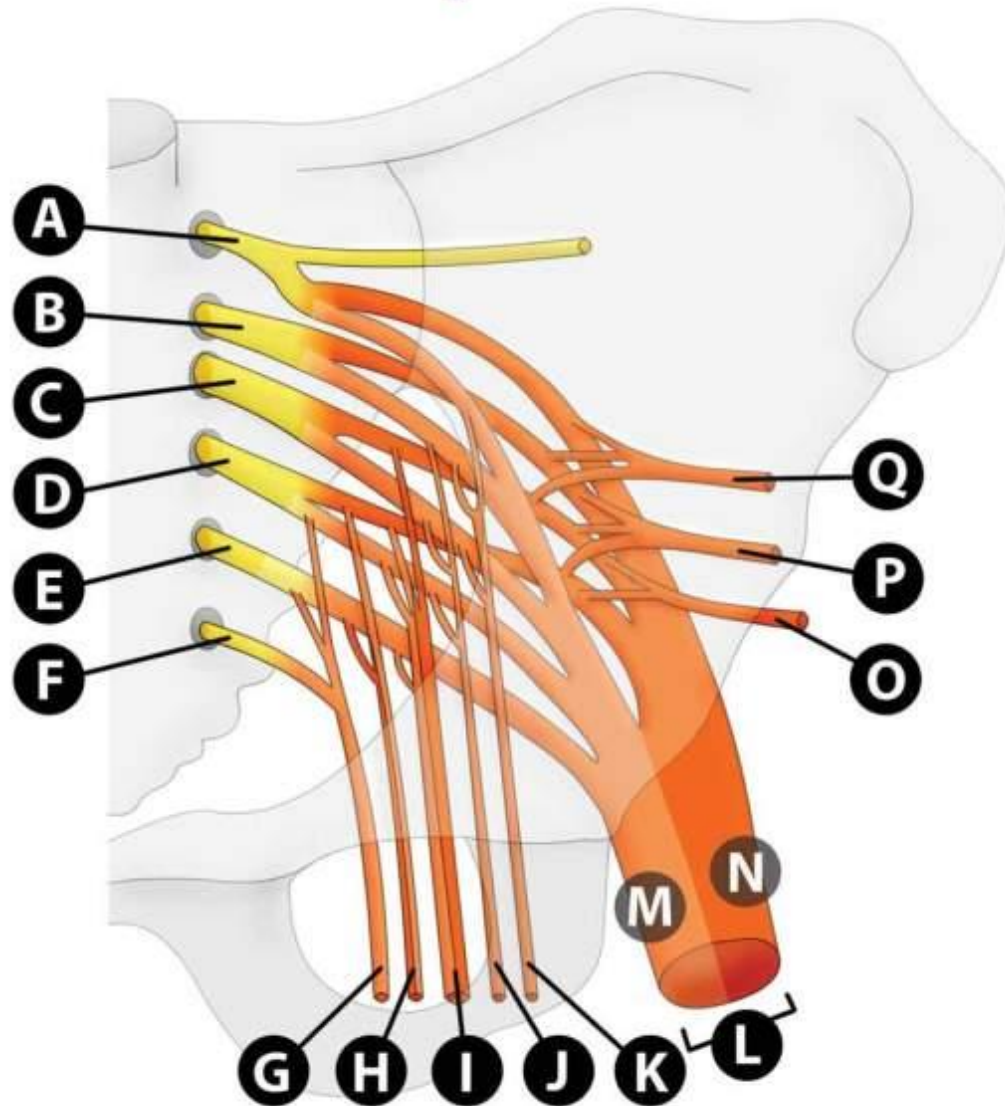
# LUMBAR PLEXUS

## Lumbar plexus



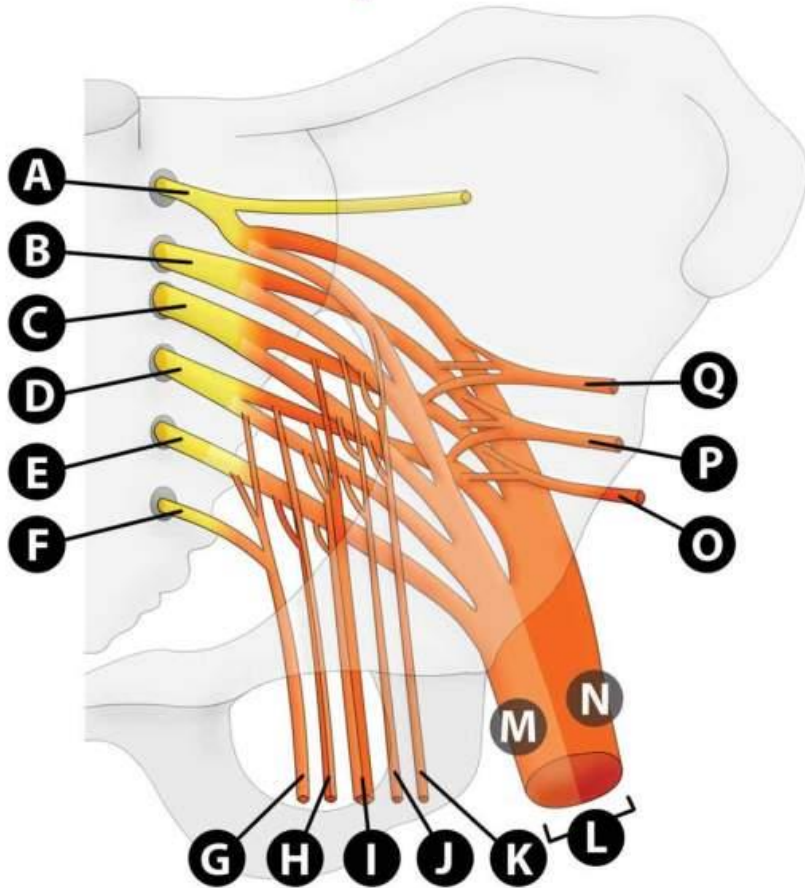
- A. L2 VERTEBRA
- B. L3 VERTEBRA
- C. L4 VERTEBRA
- D. L5 VERTEBRA
- E. L5/S1 INTERVERTEBRAL DISC
- F. SACRUM
- G. L1 NERVE ROOT
- H. L2 NERVE ROOT
- I. L3 NERVE ROOT
- J. L4 NERVE ROOT
- K. L5 NERVE ROOT
- L. ILIOHYPOGASTRIC N.
- M. ILIOINGUINAL N.
- N. LATERAL CUTANEOUS NERVE OF THIGH
- O. NERVE TO ILIACUS
- P. SUP & INF GLUTEAL NERVES
- Q. FEMORAL N.
- R. ACCESSORY OBTURATOR N.
- S. OBTURATOR N.
- T. LUMBOSACRAL TRUNK

# Sacral plexus



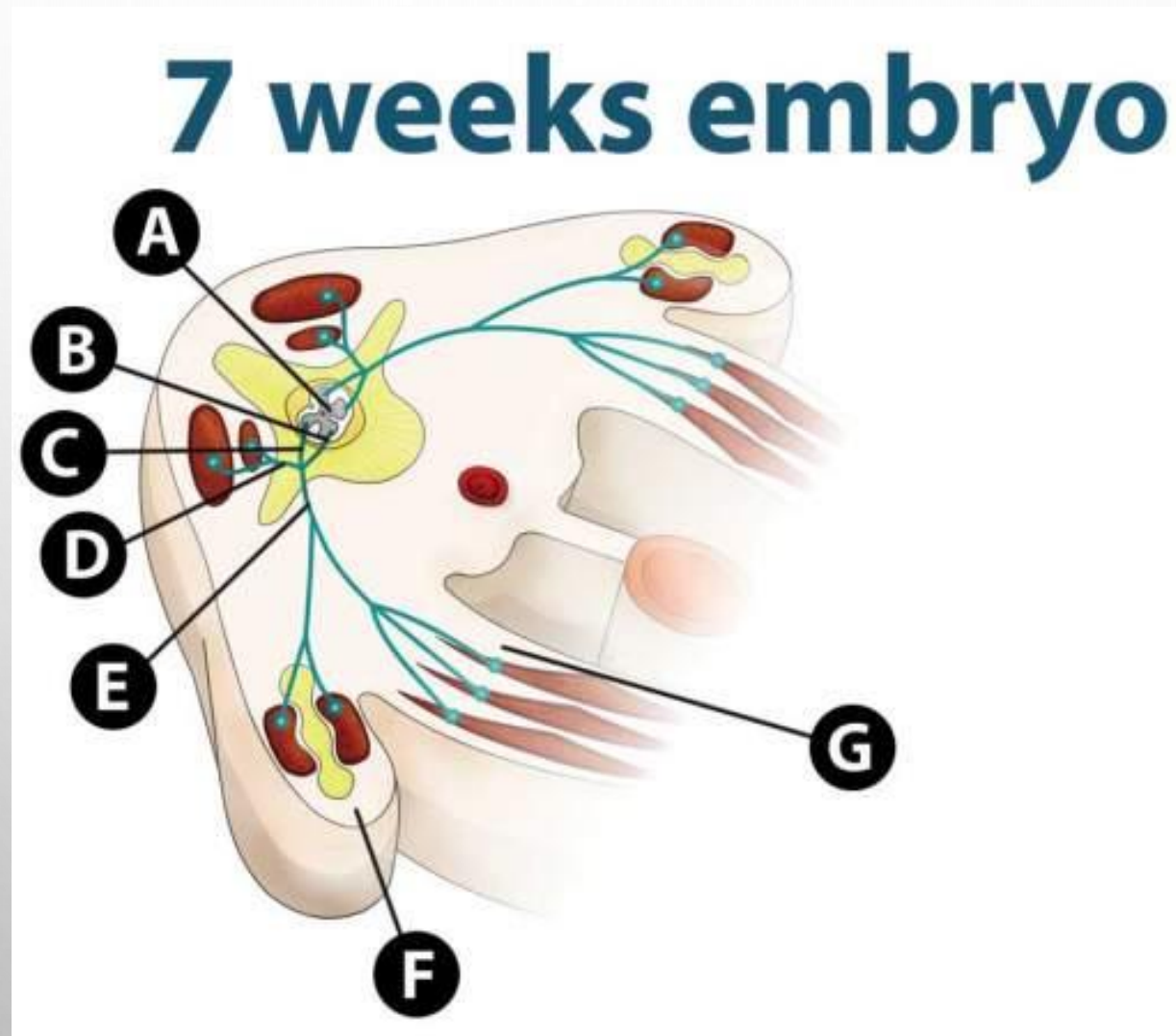
# SACRAL PLEXUS

## Sacral plexus



- A. S1 SACRAL ROOT
- B. S2 SACRAL ROOT
- C. S3 SACRAL ROOT
- D. S4 SACRAL ROOT
- E. S5 SACRAL ROOT
- F. CO COCCYGEAL ROOT
- G. PUDENTAL N.
- H. PERFORATING CUTANEOUS N.
- I. POST. FEMORAL CUTANEOUS N.
- J. NERVE TO QUADRATUS FEMORIS AND INF. GEMELLIUS
- K. NERVE TO OBTURATOR INTERNUS AND SUP. GEMELLIUS
- L. SCIATIC N.
- M. TIBIAL N.
- N. COMMON PERONEAL N.
- O. NERVE TO PIRIFORMIS
- P. INFERIOR GLUTEAL N.
- Q. SUPERIOR GLUTEAL N.

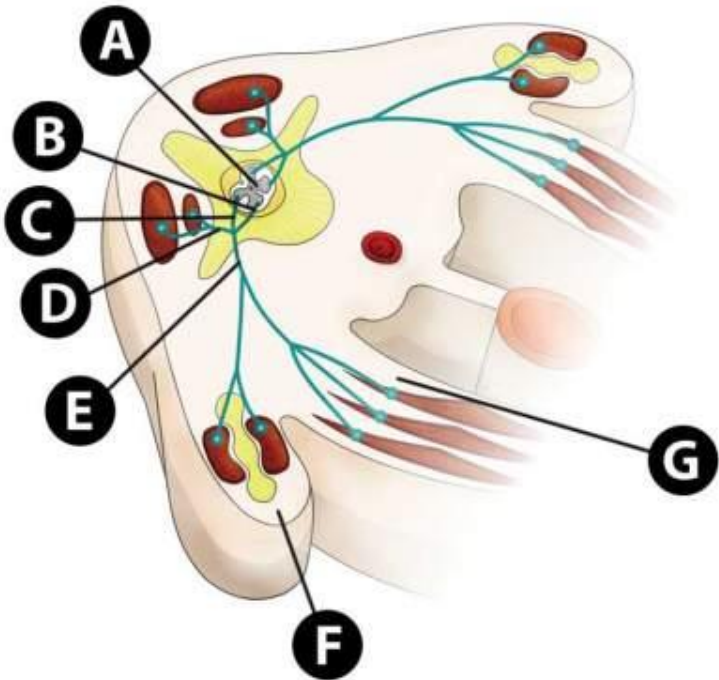
# EMBRYO AT 7 WEEKS (TRANSVERSE)





# EMBRYO AT 7 WEEKS (TRANSVERSE)

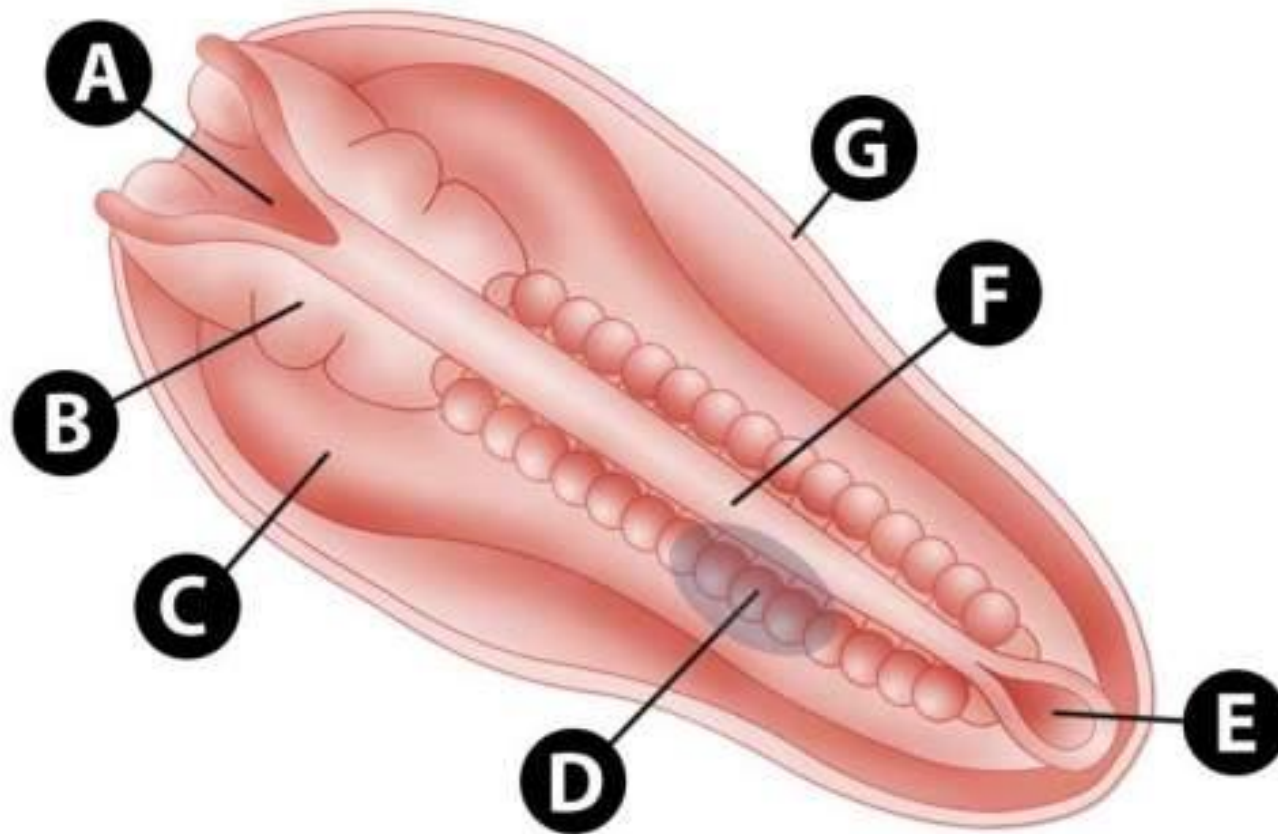
## 7 weeks embryo



- A. SPINAL CORD
- B. ANTERIOR NERVE ROOT
- C. POSTERIOR NERVE ROOT
- D. DORSAL RAMUS
- E. VENTRAL RAMUS
- F. PRIMITIVE LIMB
- G. ABDOMINAL WALL

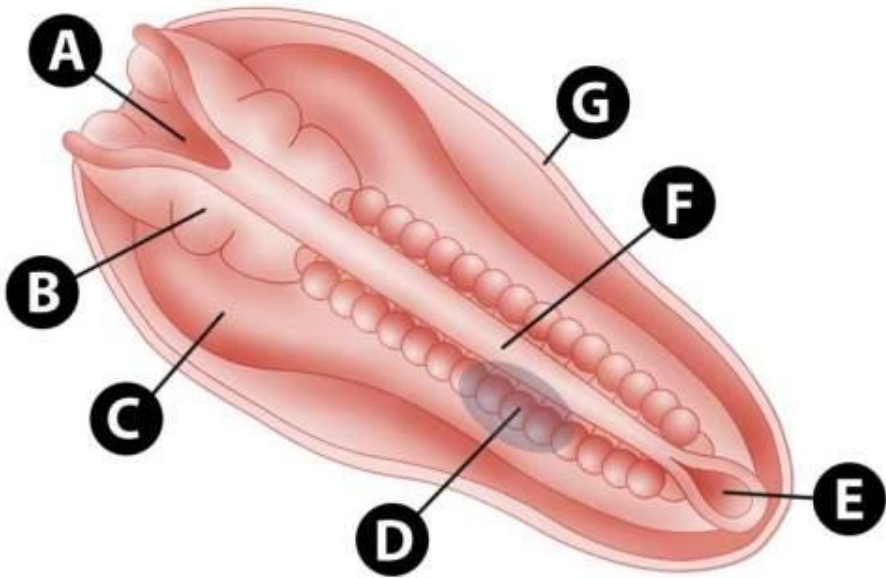
# EMBRYO AT 23 WEEKS (SAGGITAL)

## 23 weeks embryo



# EMBRYO AT 23 WEEKS (SAGGITAL)

## 23 weeks embryo



- A. ANTERIOR NEUROPORE
- B. PRIMITIVE BRAIN
- C. PERICARDIAL BULGE
- D. SOMITES
- E. POSTERIOR NEUROPORE
- F. NEURAL TUBE
- G. CUT EDGE OF AMNION

**END**