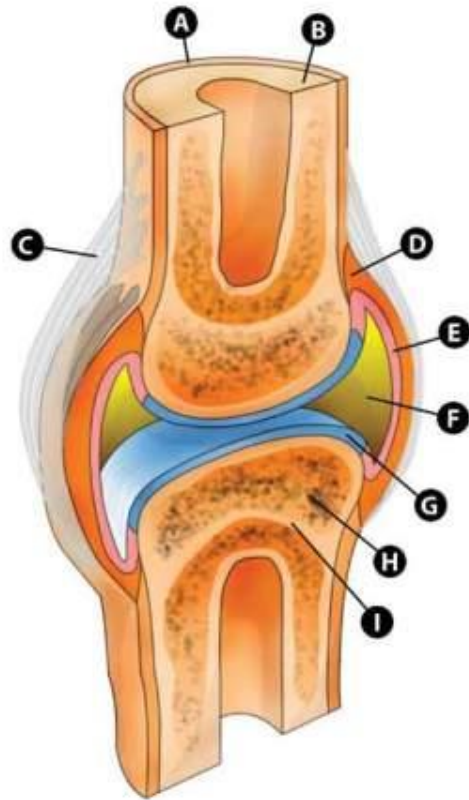




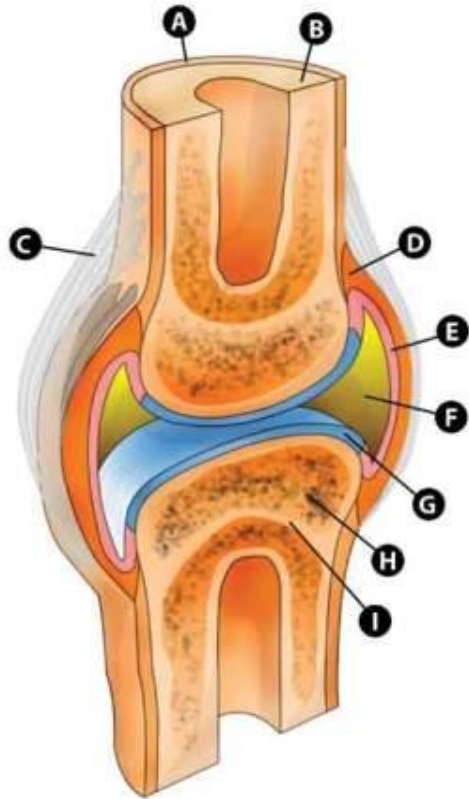
# THE STRUCTURE OF THE SYNOVIAL JOINTS

- IDENTIFY ALL THE LABELS ON THE FOLLOWING  
SERIES OF IMAGES

# STRUCTURES IN A TYPICAL SYNOVIAL JOINT

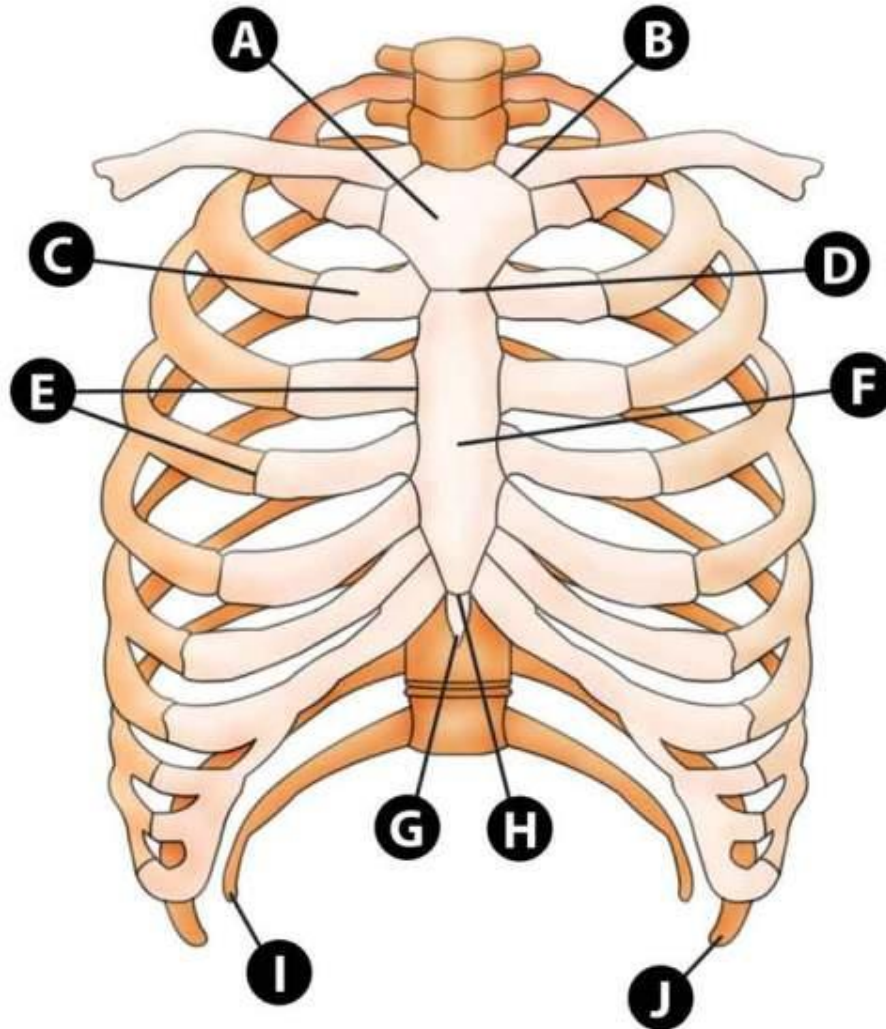


# SYNOVIAL JOINTS

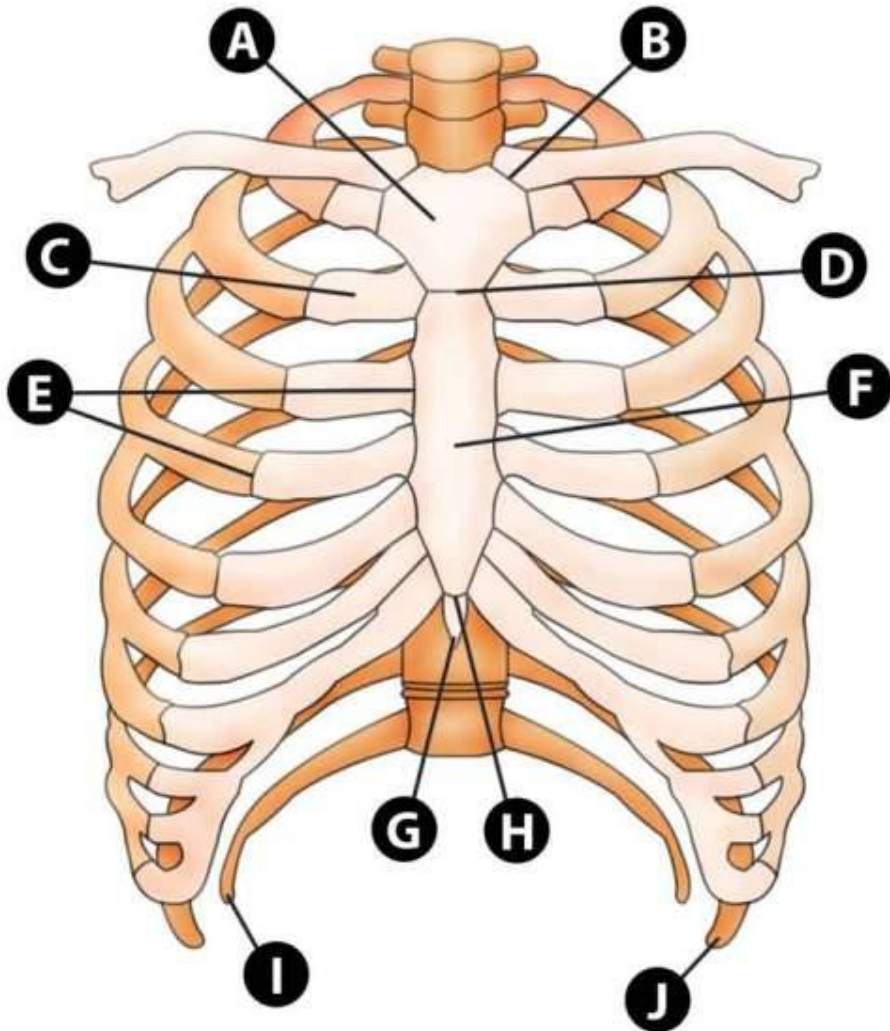


- A. PERIOSTEUM
- B. COMPACT BONE
- C. EXTRA CAPSULAR LIGAMENTS
- D. FIBROUS CAPSULE
- E. SYNOVIAL MEMBRANE
- F. SYNOVIAL CAVITY AND FLUID
- G. HYALINE / ARTICULAR CARTILAGE
- H. EPIPHYSIS / CANCELLOUS BONE
- I. EPIPHYSEAL PLATE

# THORAX - ANTERIORLY

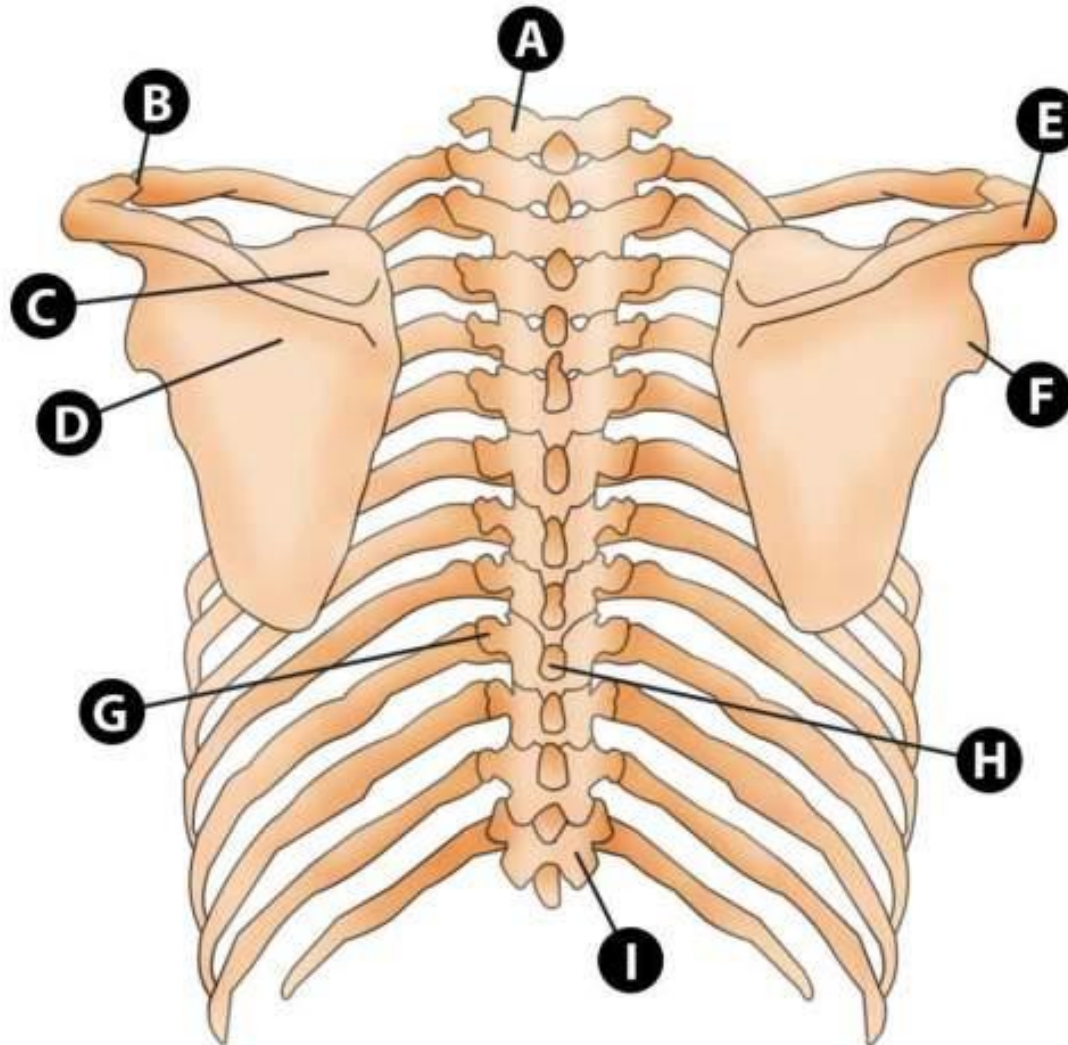


# THORAX - ANTERIORLY

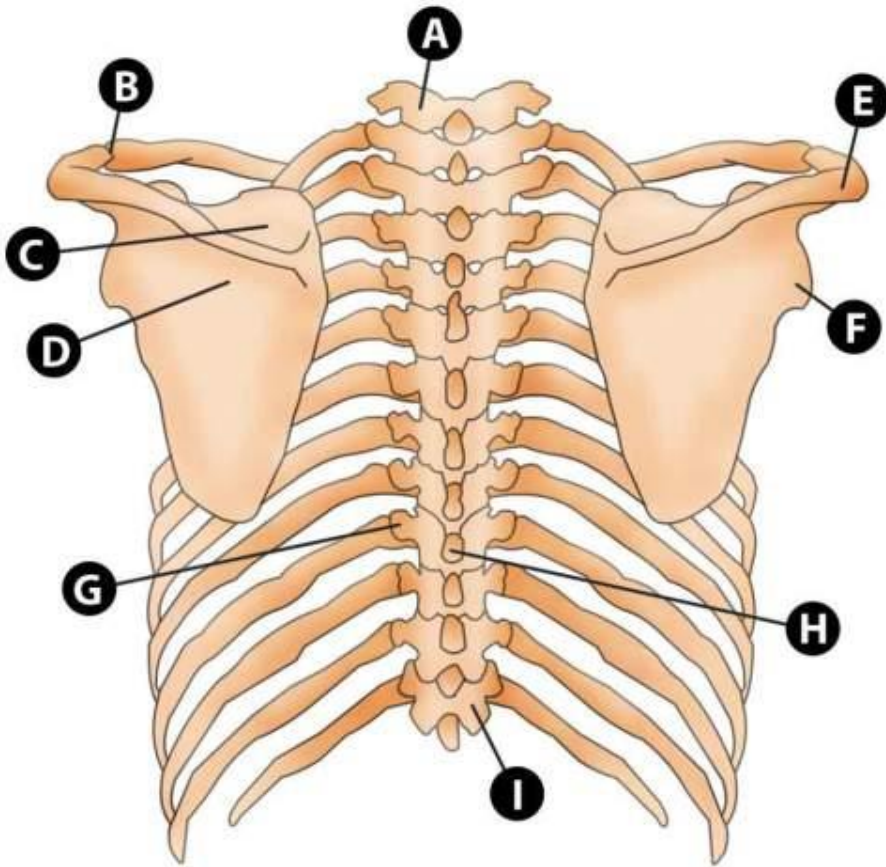


- A. MANUBRIUM
- B. STERNOCLAVICULAR JOINT
- C. COSTAL CARTILAGES
- D. MANUBRIOSTERNAL ANGLE
- E. STERNOCOSTAL JOINT
- F. BODY OF STERNUM
- G. XYPHOID PROCESS
- H. STERNOXYPHOID JOINT
- I. 12<sup>TH</sup> RIB
- J. 11<sup>TH</sup> RIB

# THORAX - POSTERIORLY

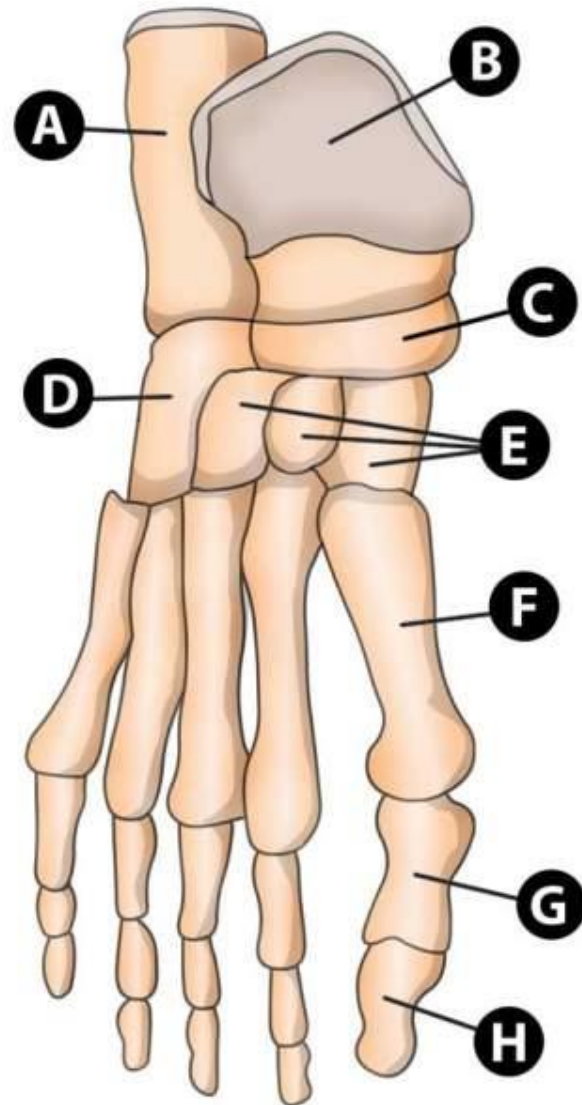


# THORAX - POSTERIORLY



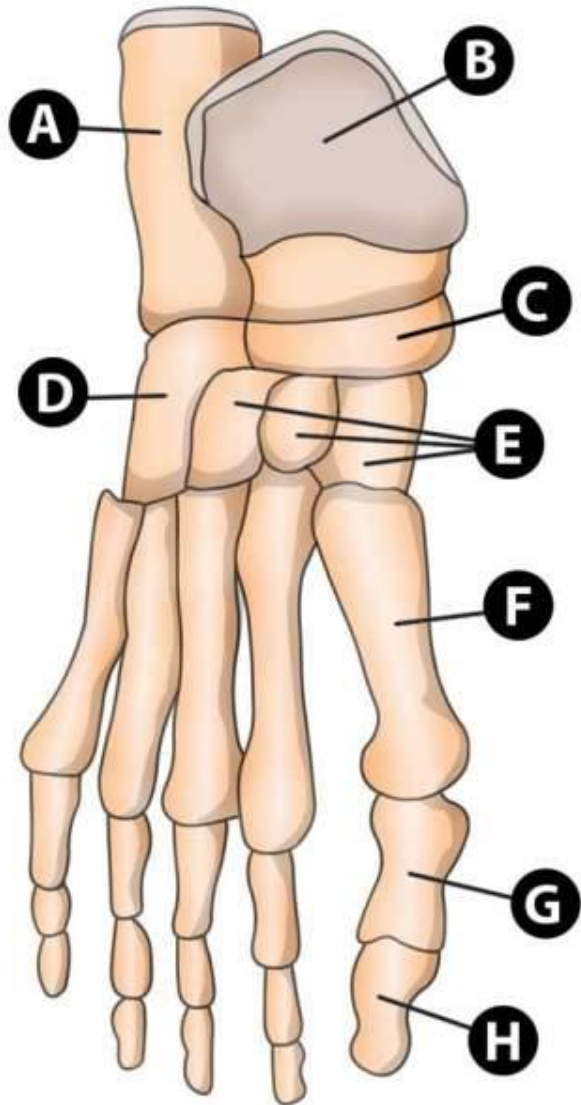
- A. 1<sup>ST</sup> THORACIC VERTEBRA
- B. ACROMIOCLAVICULAR JOINT
- C. SUPRASCAPULAR FOSSA
- D. INFRASCAPULAR FOSSA
- E. SPINE OF THE SCAPULA /  
ACROMION
- F. GLENOID FOSSA
- G. COSTOTRANSVERSE /  
COSTOVERTEBRAL JOINT
- H. SPINE OF THORACIC VERTEBRA
- I. INFERIOR ARTICULAR PROCESS

# THE FOOT





# THE FOOT



A. CALCANEUM

B. TALUS

C. NAVICULAR

D. CUBOID

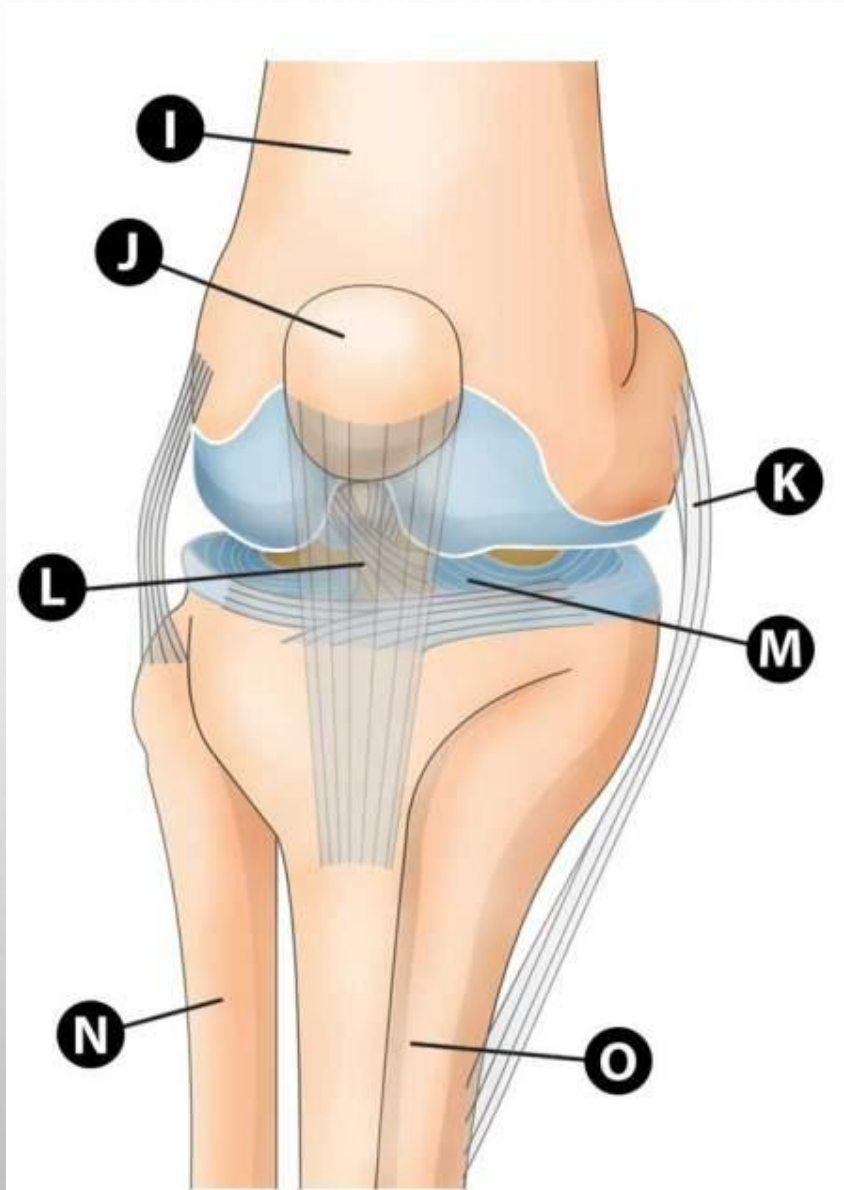
E. CUNEIFORMS

F. 1<sup>ST</sup> PROXIMAL PHALANX

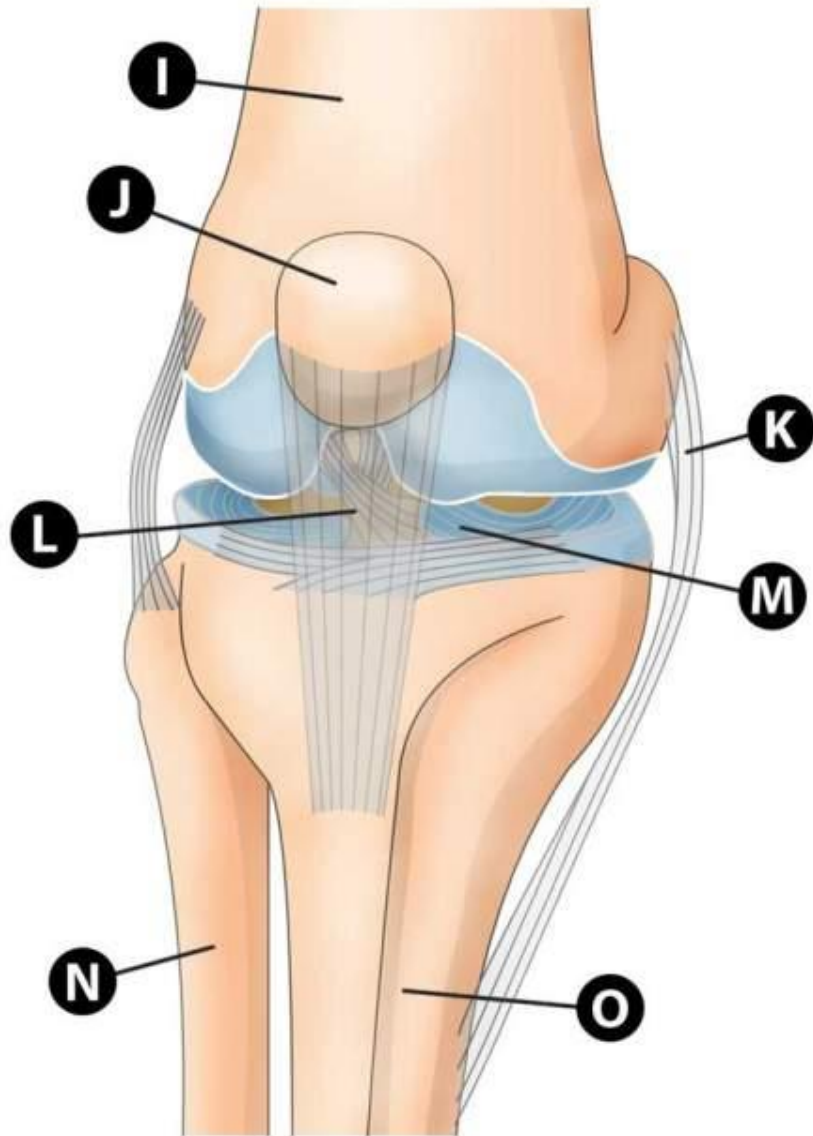
G. 1<sup>ST</sup> INTERMEDIATE  
PHALANX

H. 1<sup>ST</sup> DISTAL PHALANX

# THE KNEE



# THE KNEE



I. FEMUR

J. PATELLA

K. MEDIAL COLLATERAL  
LIGAMENT

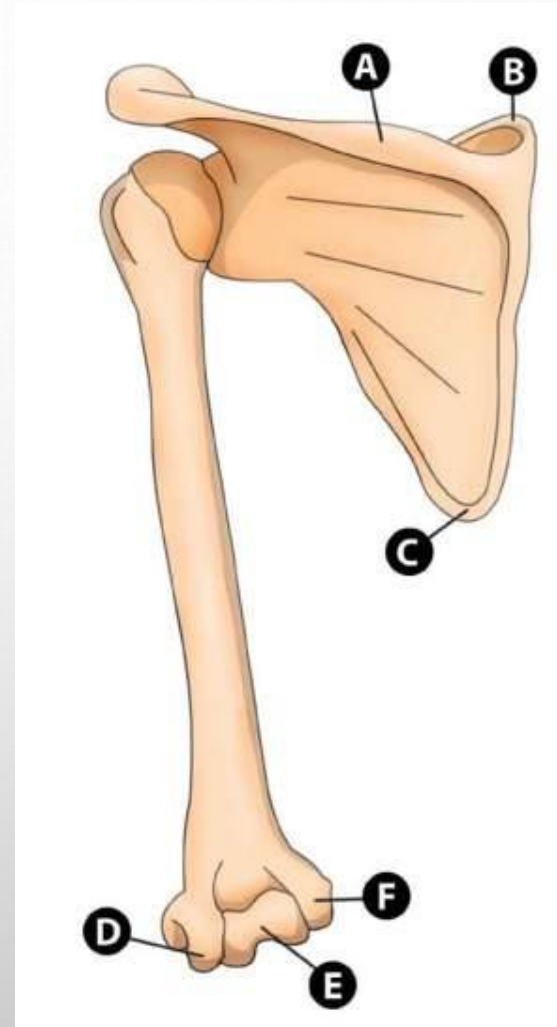
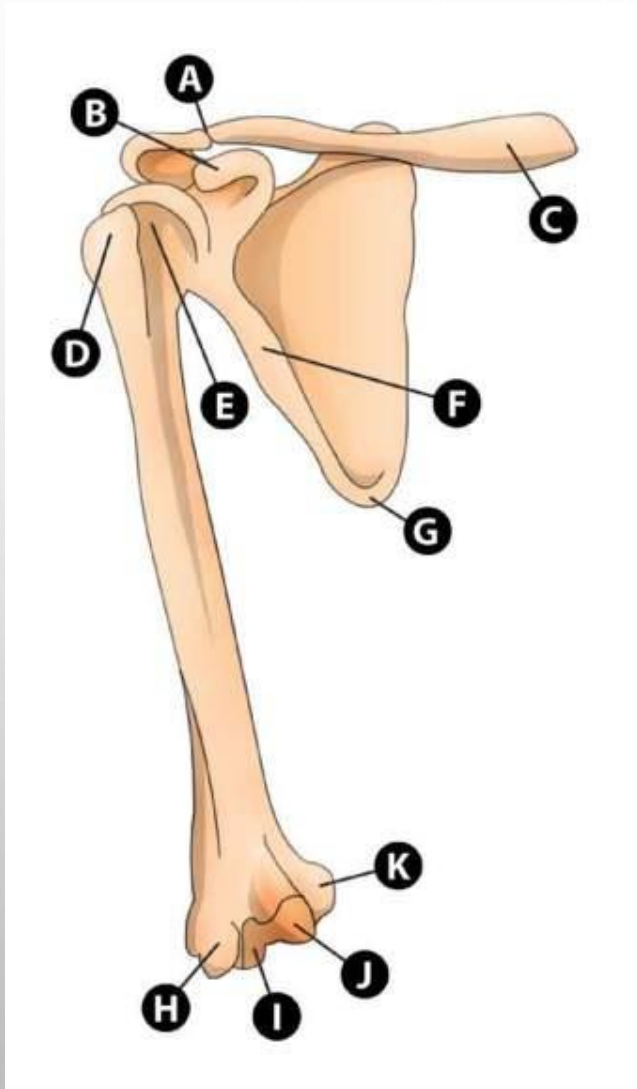
L. PATELLA LIGAMENT

M. MEDIAL MENISCUS

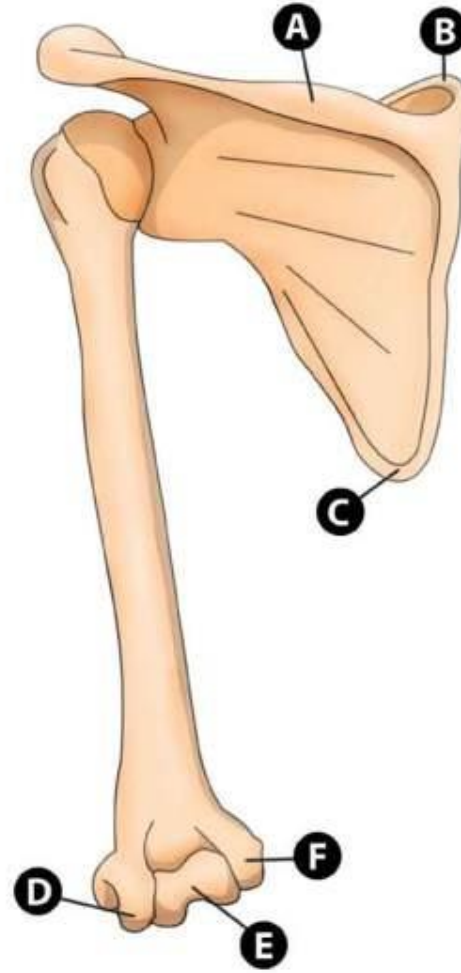
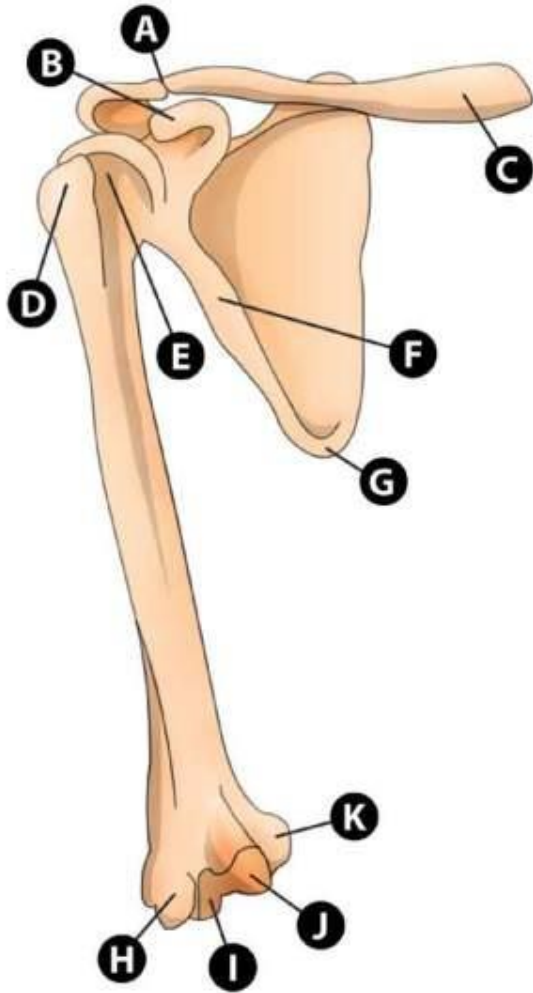
N. FIBULA

O. TIBIA

# THE SHOULDER GIRDLE

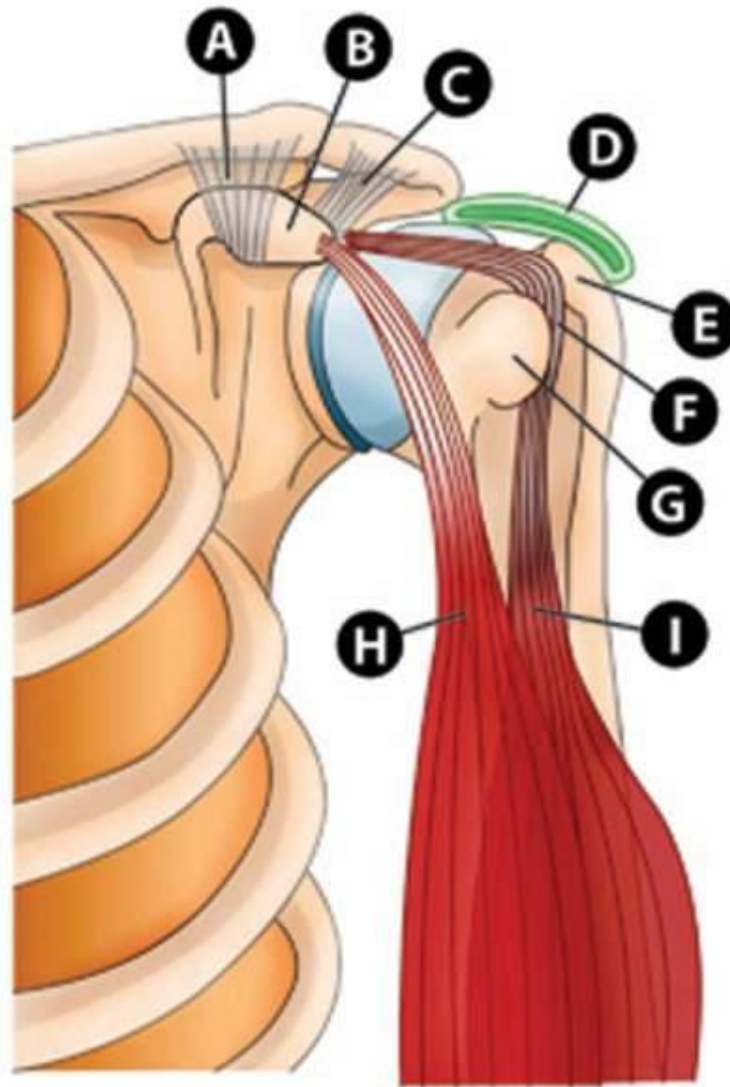


# THE SHOULDER GIRDLE

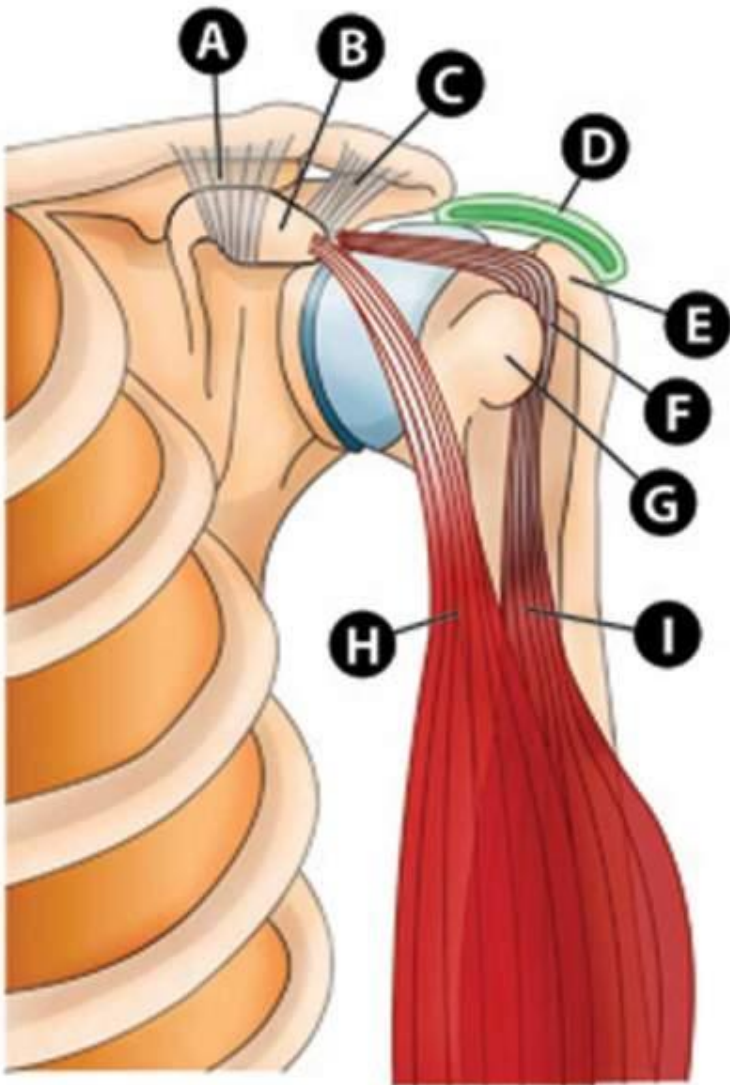


- A. ACROMIOCLAVICULAR JOINT
  - B. CORACOID PROCESS
  - C. CLAVICLE
  - D. GREATER TUBEROSITY
  - E. BICIPITAL GROOVE
  - F. LATERAL BORDER OF SCAPULA
  - G. INFERIOR ANGLE OF SCAPULA
  - H. LATERAL EPICONDYLE
  - I. CAPITULUM
  - J. TROCHLEA
  - K. MEDIAL EPICONDYLE
- (POSTRIOR VIEW)**
- A. SPINE OF SCAPULA
  - B. SUPERIOR ANGLE OF SCAPULA
  - C. INFERIOR ANGLE OF SCAPULA
  - D. LATERAL EPICONDYLE
  - E. TROCHLEA
  - F. MEDIAL EPICONDYLE

# THE SHOULDER

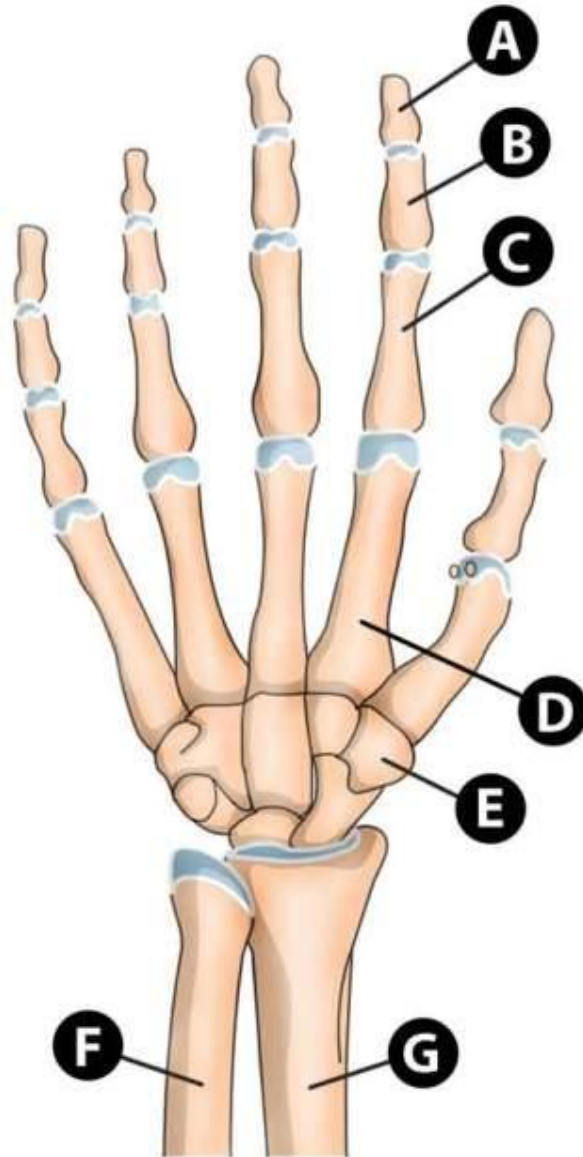


# THE SHOULDER



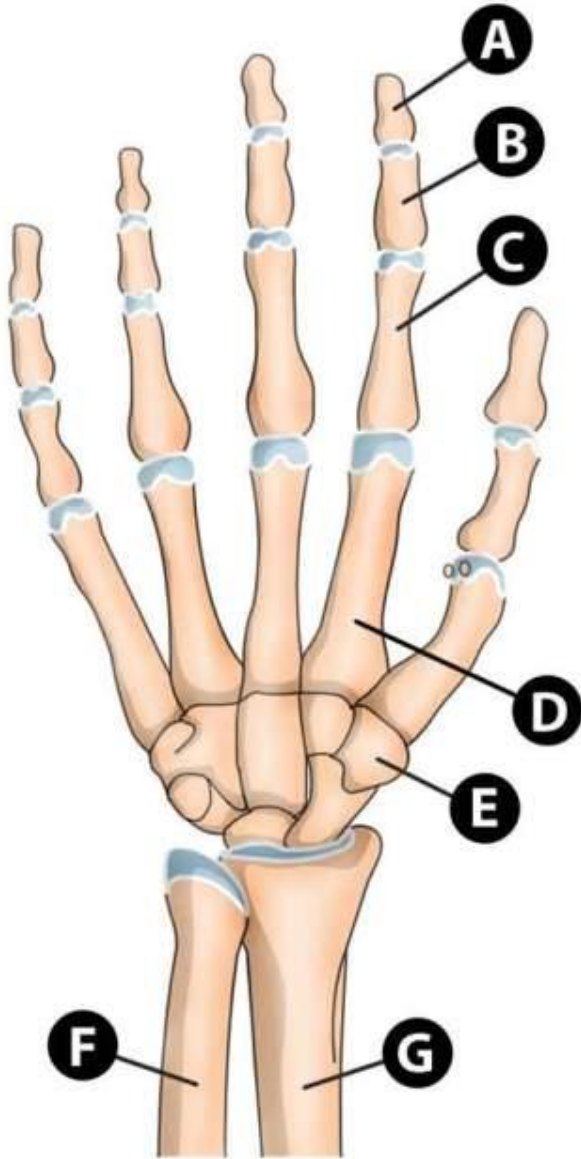
- A. CORACOACROMIAL LIGAMENTS (CONOID & TRAPEZOID)
- B. CORACOID PROCESS
- C. CORACOACROMIAL LIGAMENT
- D. SUBACROMIAL BURSA
- E. GREATER TUBEROSITY
- F. TENDON OF LONG HEAD OF BICEPS
- G. LESSER TUBEROSITY
- H. BICEPS – SHORT HEAD
- I. BICEPS – LONG HEAD

# THE HAND



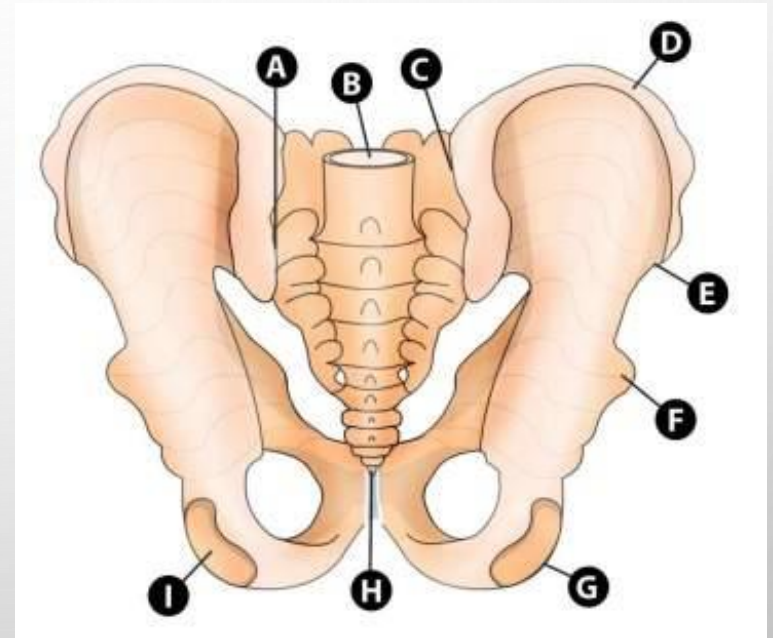
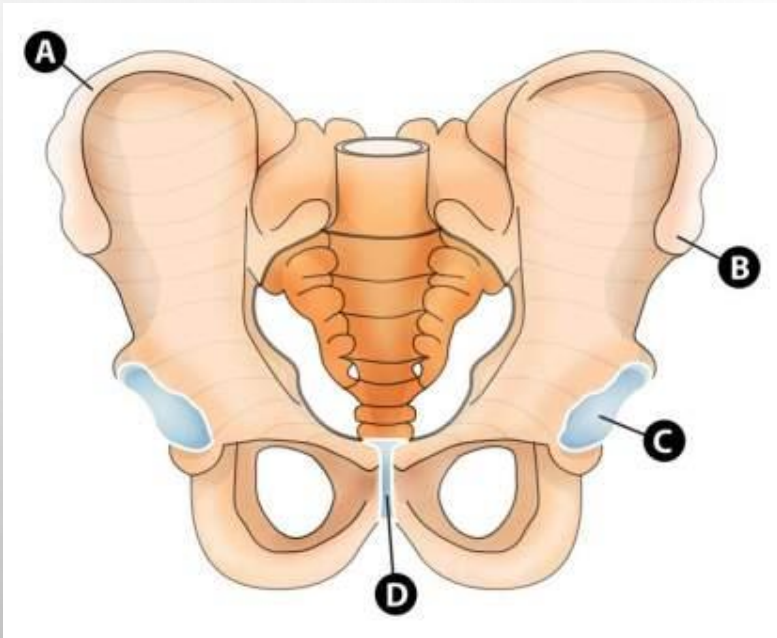


# THE HAND

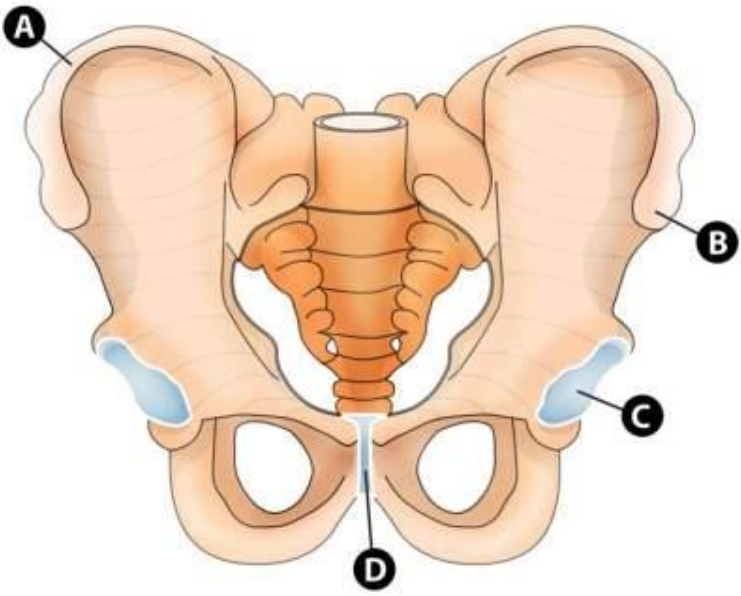


- A. 2<sup>ND</sup> DISTAL PHALANX
- B. 2<sup>ND</sup> INTERMEDIATE PHALANX
- C. 2<sup>ND</sup> PROXIMAL PHALANX
- D. 2<sup>ND</sup> METACARPAL
- E. CARPALS
- F. ULNA
- G. RADIUS

# THE PELVIS



# THE PELVIS

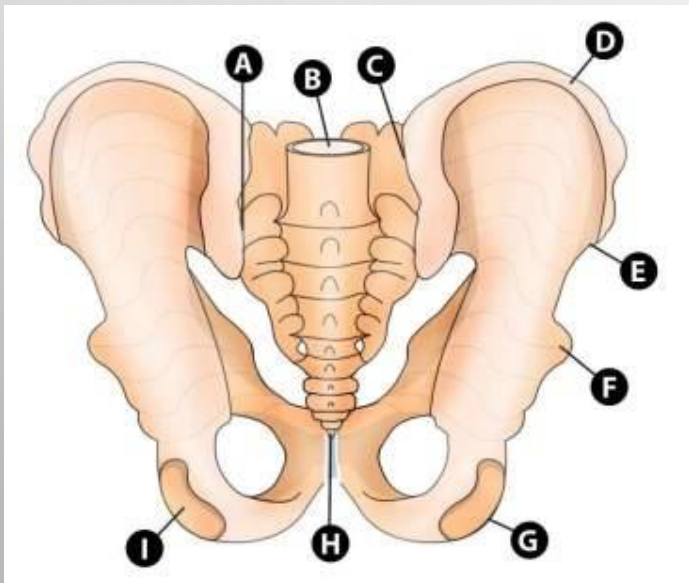


## (ANTERIOR VIEW)

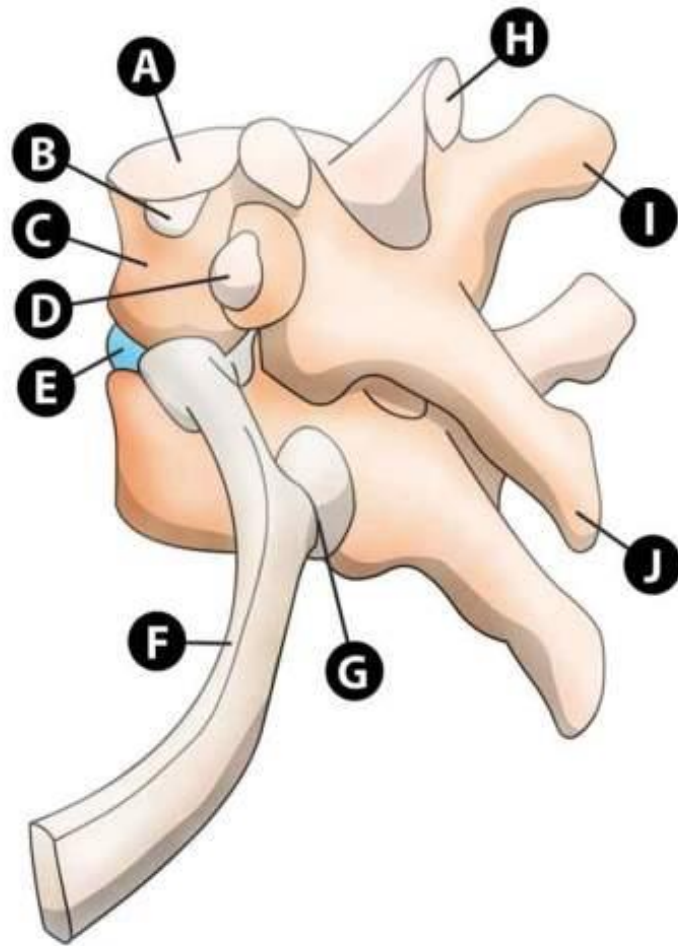
- ILIAC CREST
- ANT. SUP. ILIAC SPINE
- ACETABULUM
- SYMPHYSIS PUBIS

## (POSTERIOR VIEW)

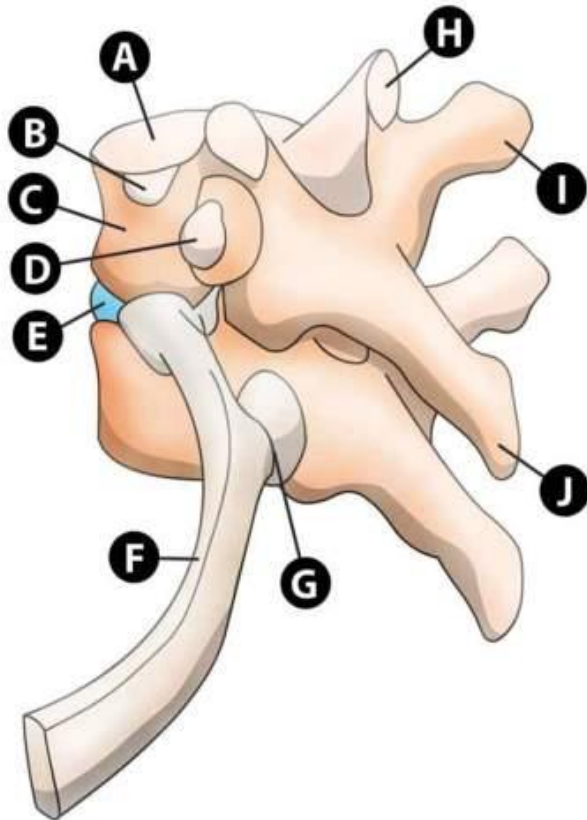
- SACROILIAC JOINT
- SACRUM
- POST. SUP. ILIAC SPINE
- ILIAC CREST
- ANT SUP ILIAC SPINE
- ANT INF. ILIAC SPINE
- ISCHIUM
- COCCYX
- ACETABULUM



# THORACIC SEGMENT



# THORACIC SEGMENT



- A. INTERVERTEBRAL DISC END-PLATE
- B. RIB ARTICULAR FACET
- C. VERTEBRAL BODY
- D. TRANSVERSE PROCESS ARTICULAR FACET
- E. INTERVERTEBRAL DISC
- F. ANGLE OF RIB
- G. COSTOTRANSVERSE JOINT
- H. SUPERIOR ARTICULAR FACET
- I. TRANSVERSE PROCESS

The image features a light gray background with several realistic water droplets of various sizes scattered across it. The droplets are rendered with soft shadows and highlights, giving them a three-dimensional appearance. In the center of the image, the word "END" is written in a bold, black, sans-serif font.

**END**