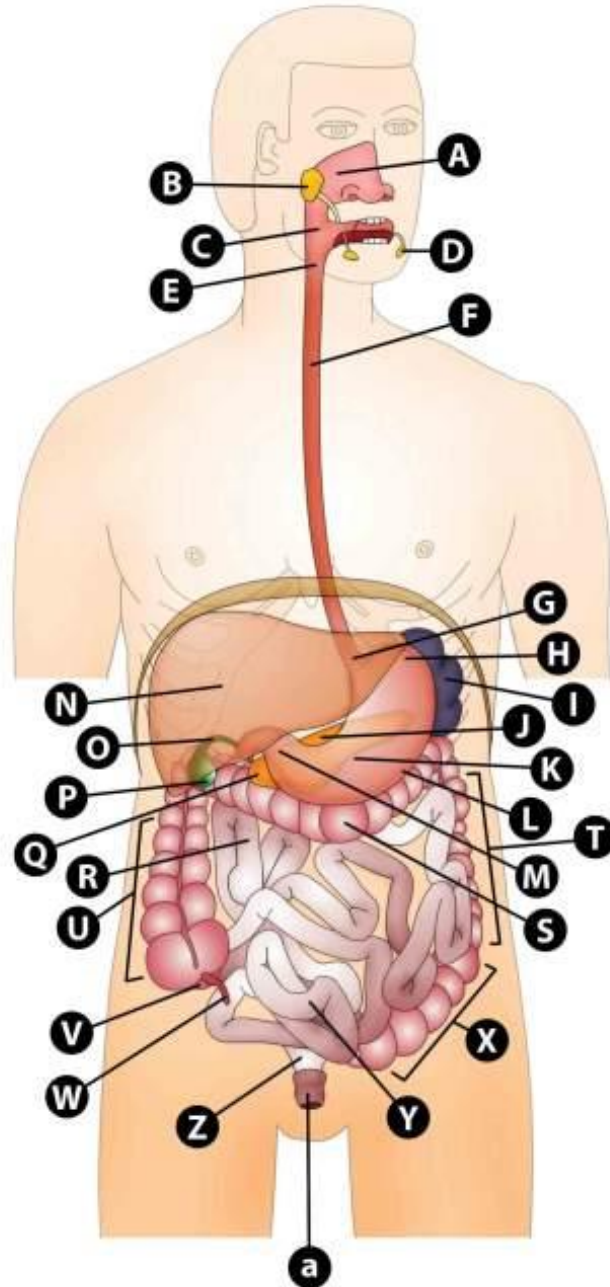




# THE GASTROINTESTINAL SYSTEM

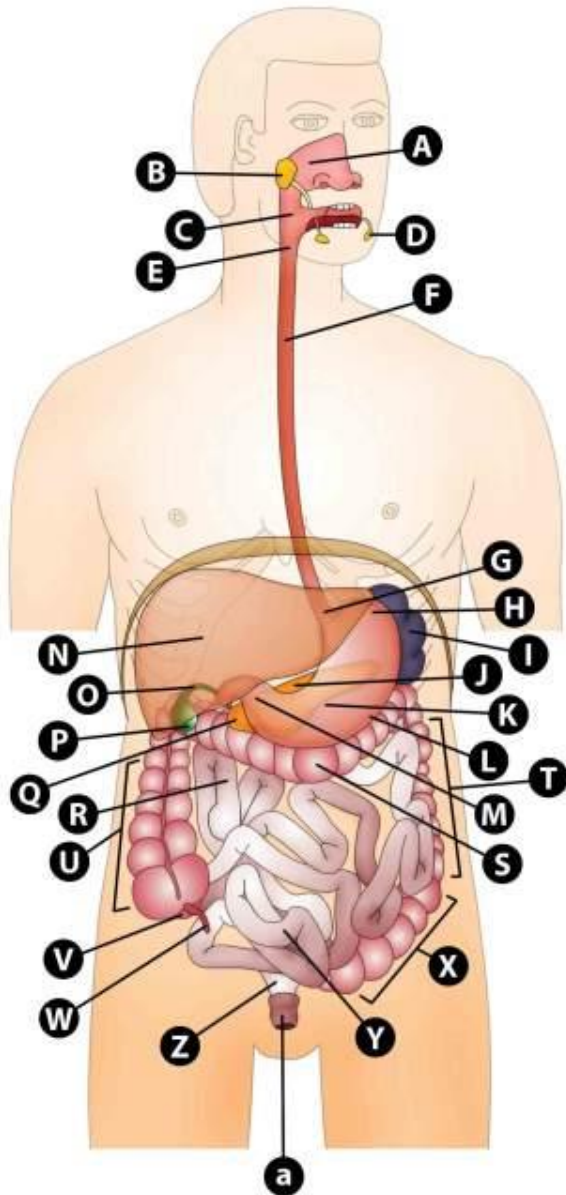
- IDENTIFY ALL THE LABELS ON THE FOLLOWING  
SERIES OF IMAGES
- 

# Organs of the digestive system



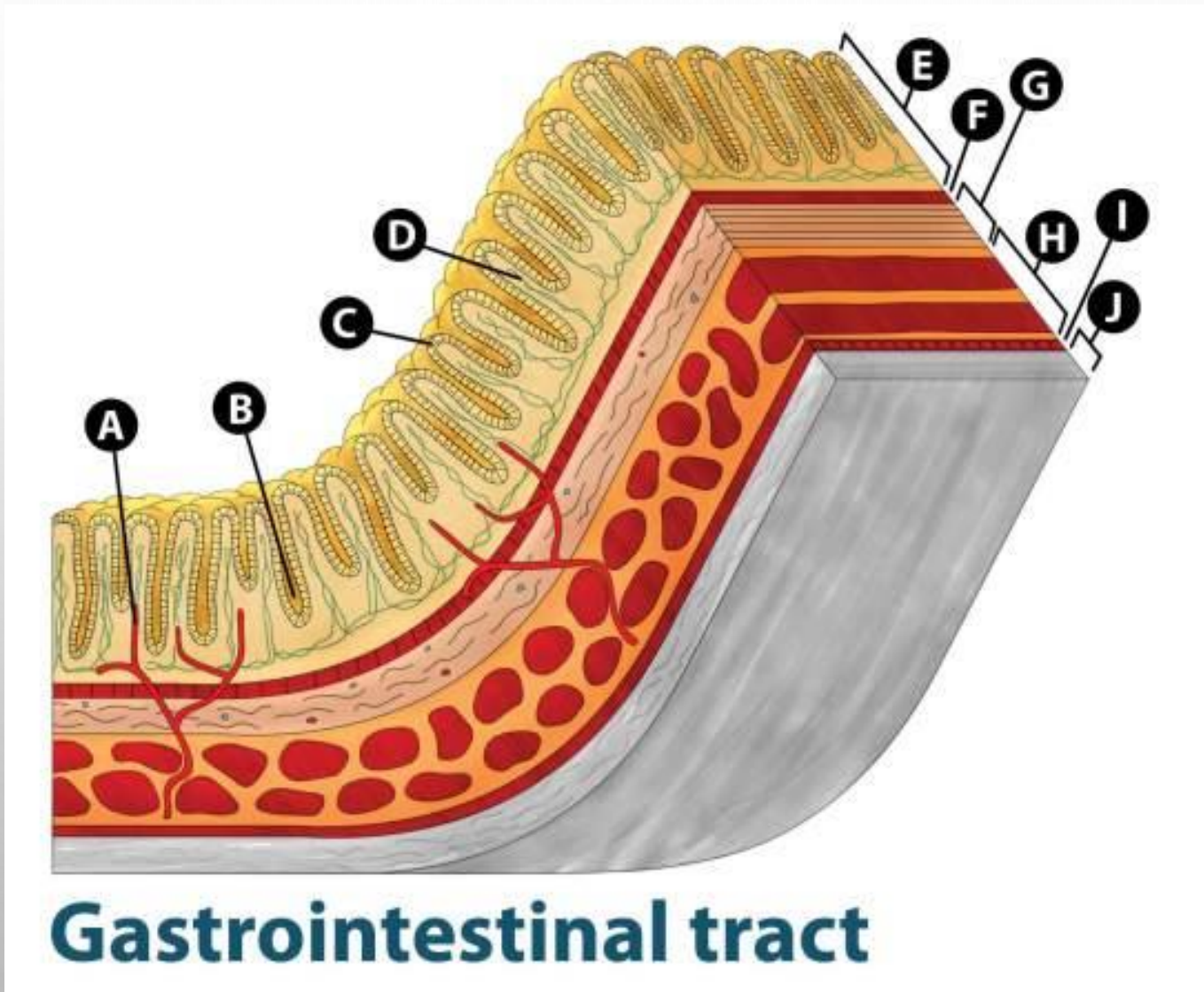
# THE DIGESTIVE TRACT

## Organs of the digestive system

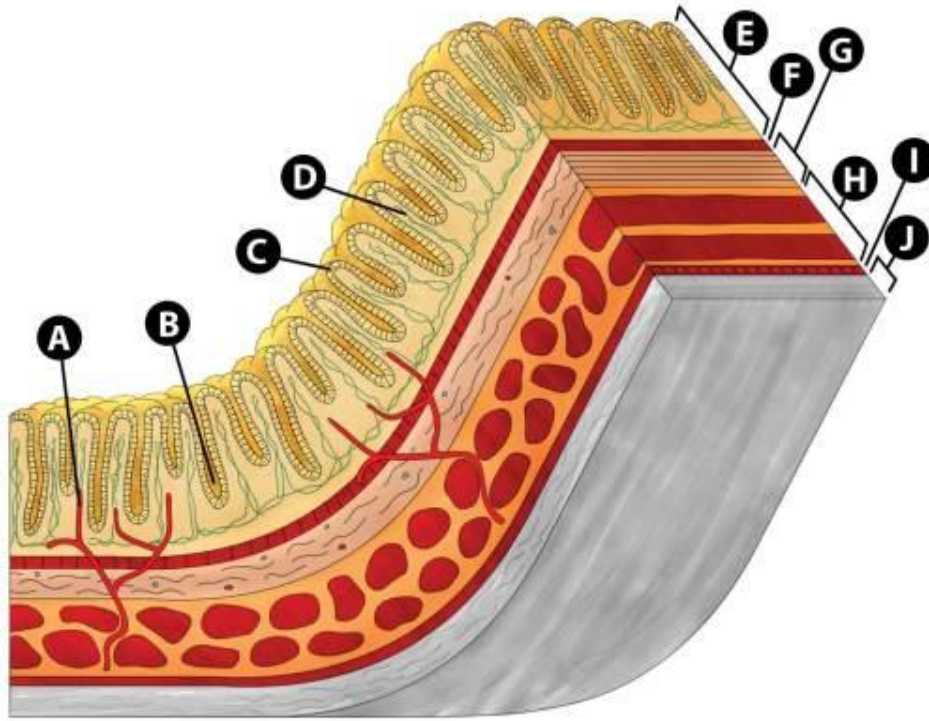


- A. NASOPHARYNX
- B. PAROTID SALIVARY GLAND
- C. OROPHARYNX
- D. SUBMANDIBULAR SALIVARY GLANDS
- E. LARYNGOPHARYNX
- F. OESOPHAGUS
- G. THE CARDIA (SPHINCTER)
- H. FUNDUS OF STOMACH
- I. SPLEEN
- J. BODY OF PANCREAS
- K. BODY OF STOMACH
- L. GREATER CURVATURE OF STOMACH
- M. PYLORUS
- N. LIVER
- O. BILLIARY DUCT
- P. GALLBLADDER
- Q. HEAD OF PANCREAS
- R. JEJUNUM
- S. TRANSVERSE COLON
- T. DESCENDING COLON
- U. ASCENDING COLON
- V. ILIOCAECAL VALVE
- W. APPENDIX
- X. SIGMOID COLON
- Y. ILEUM
- Z. RECTUM
- A. ANUS (SMALL A)

# STRUCTURE OF DIGESTIVE TRACT WALL



# STRUCTURE OF DIGESTIVE TRACT WALL

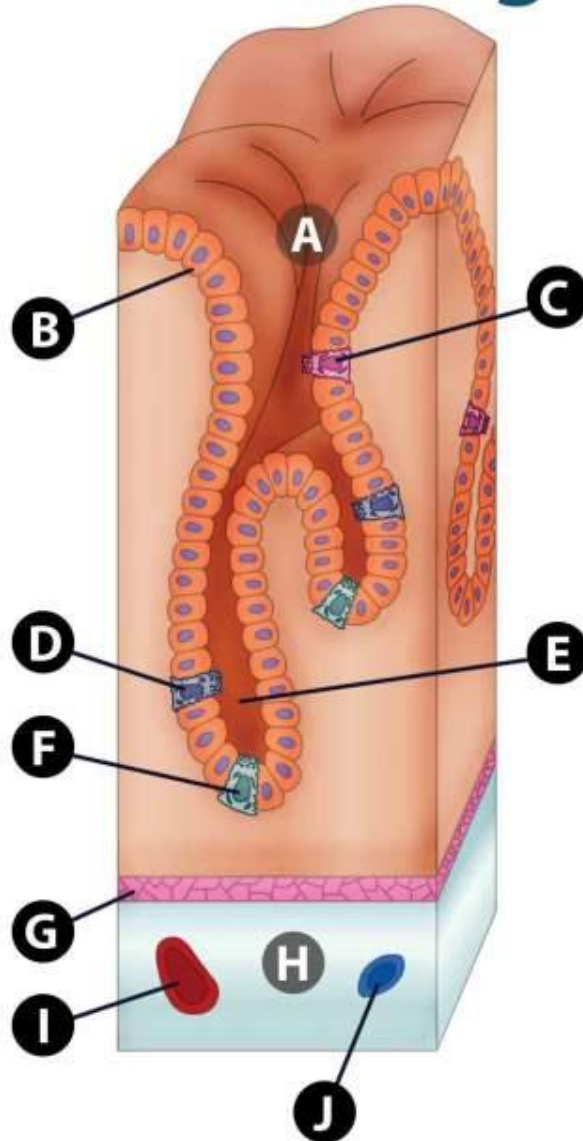


**Gastrointestinal tract**

- A. CAPILLARY IN THE MUCOSA
- B. GASTRIC PIT
- C. EPITHELIUM / BRUSH BORDER
- D. GASTRIC GLAND IN MUCOSA
- E. MUCOSA
- F. MUSCULARIS MUCOSAE
- G. SUBMUCOSA
- H. MUSCULARIS – OBLIQUE AND CIRCULAR LAYERS
- I. MUSCULARIS – LONGITUDINAL LAYER
- J. SEROSA

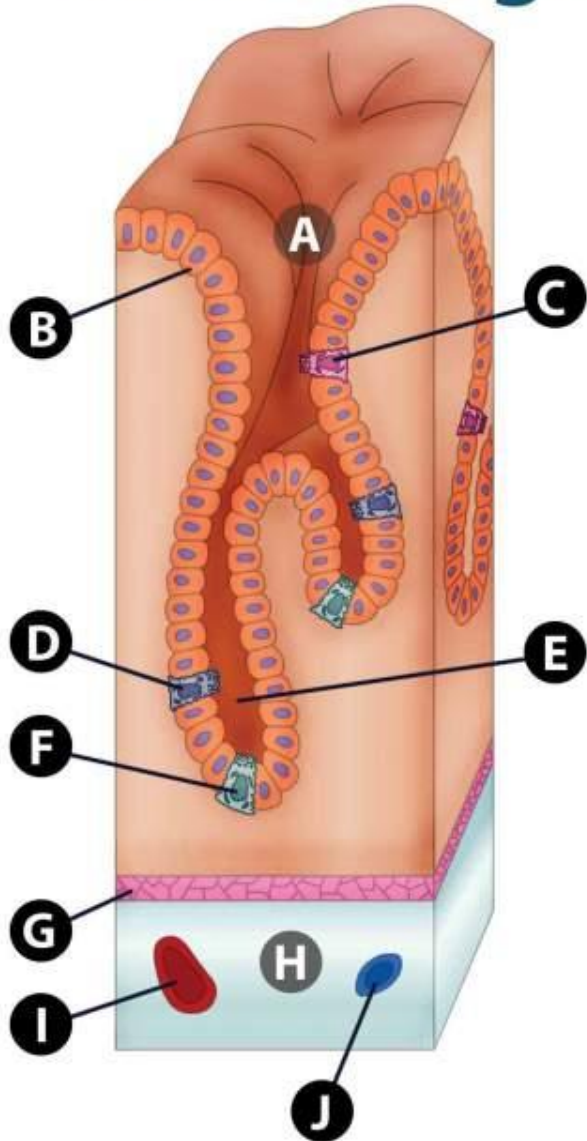
# STRUCTURE OF STOMACH WALL

## Stomach glands



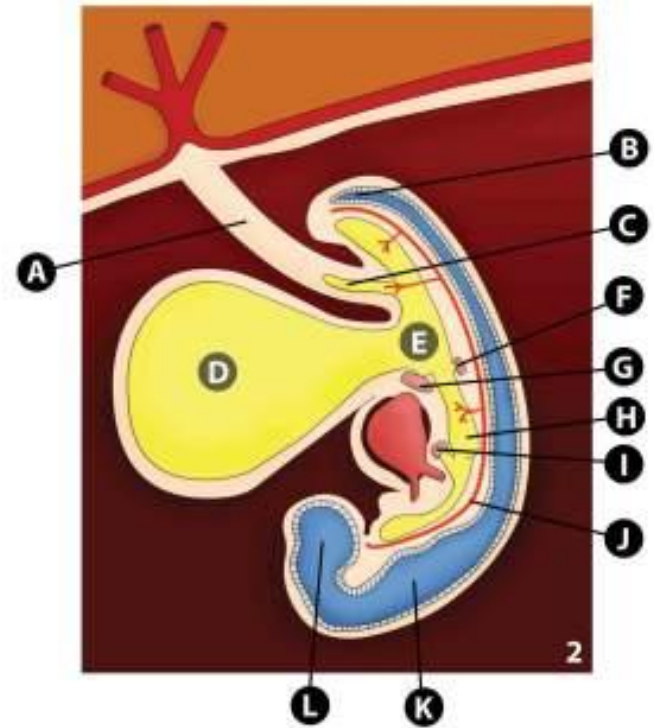
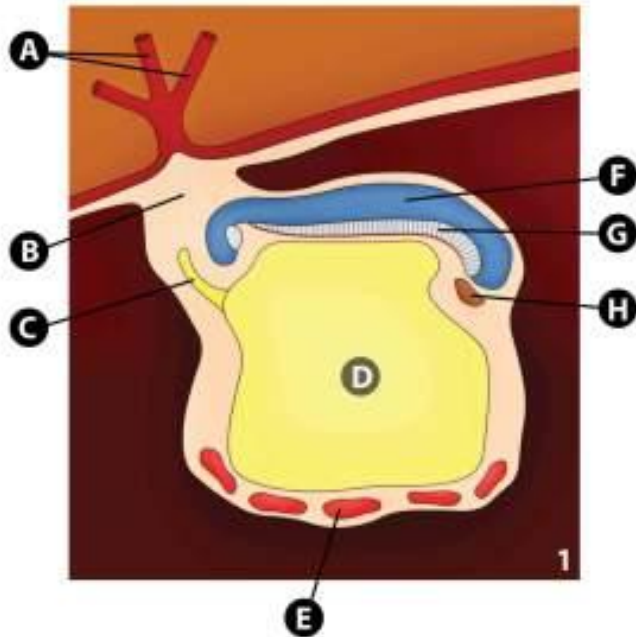
# STRUCTURE OF STOMACH WALL

## Stomach glands



- A. GASTRIC PIT
- B. EPITHELIUM – SIMPLE COLUMNAR / MUCUS SECRETING CELL
- C. PARIETAL CELL
- D. CHIEF CELL
- E. GASTRIC PIT
- F. ENTEROENDOCRINE CELL
- G. MUSCULARIS MUCOSAE
- H. MUCOSA
- I. ARTERIOLE
- J. VENULE

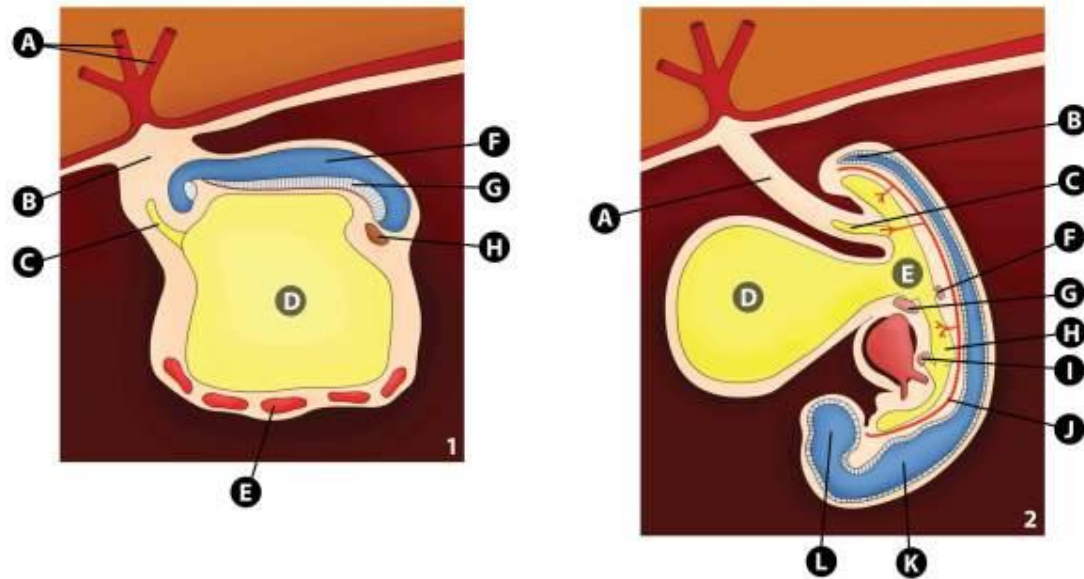
## Development of the gastrointestinal tract





# DEVELOPMENT OF THE GASTROINTESTINAL TRACT

Development of the gastrointestinal tract



- A. CHORIONIC VILLI
- B. BODY STALK
- C. ALLANTOIS
- D. YOLK SAC
- E. BLOOD ISLAND
- F. AMNIOTIC CAVITY
- G. NEURAL PLATE
- H. FORMATION OF HEART

- A. Chorionic villi
- B. Body stalk
- C. Allantois
- D. Yolk sac
- E. Gut
- F. Pancreas
- G. Liver
- H. Foregut
- I. Lung
- J. Dorsal aorta
- K. Brainstem
- L. Head

The image features a light gray background with several realistic water droplets of various sizes scattered across it. The droplets are rendered with soft shadows and highlights, giving them a three-dimensional appearance. In the center of the image, the word "END" is written in a bold, black, sans-serif font.

**END**