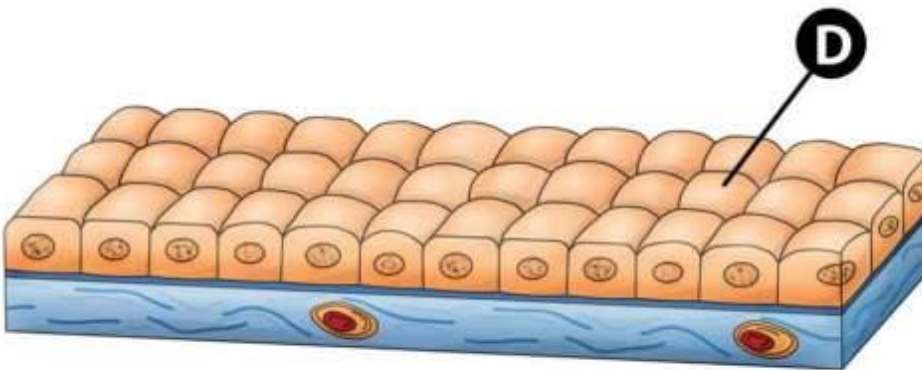
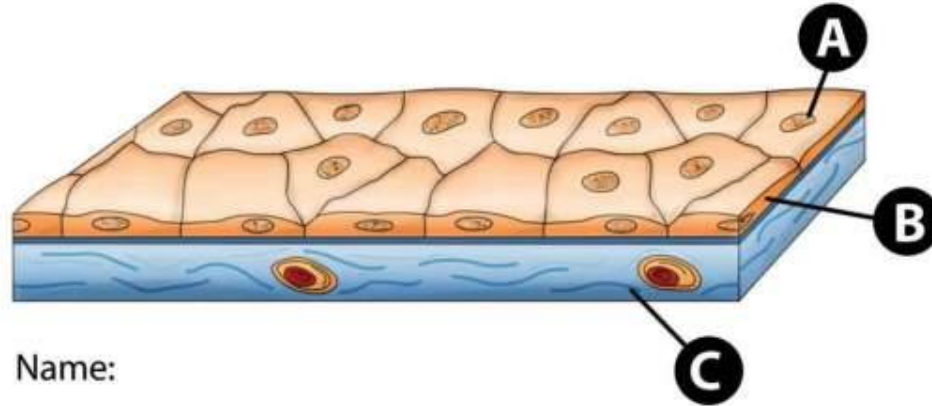




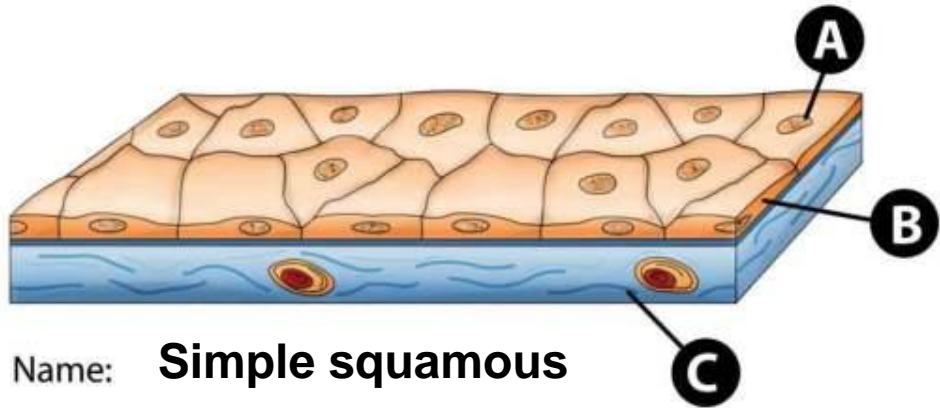
EPITHELIAL AND CONNECTIVE TISSUES

- IDENTIFY ALL THE LABELS ON THE FOLLOWING
SERIES OF IMAGES

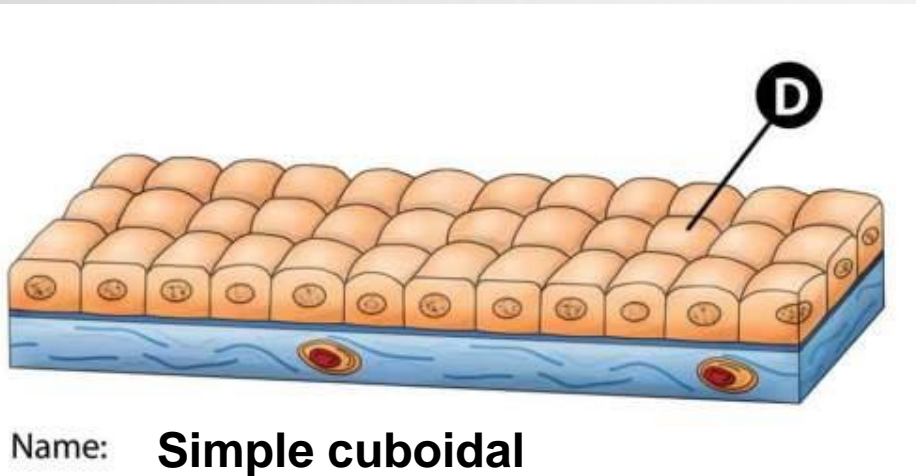
EPITHELIAL TISSUES



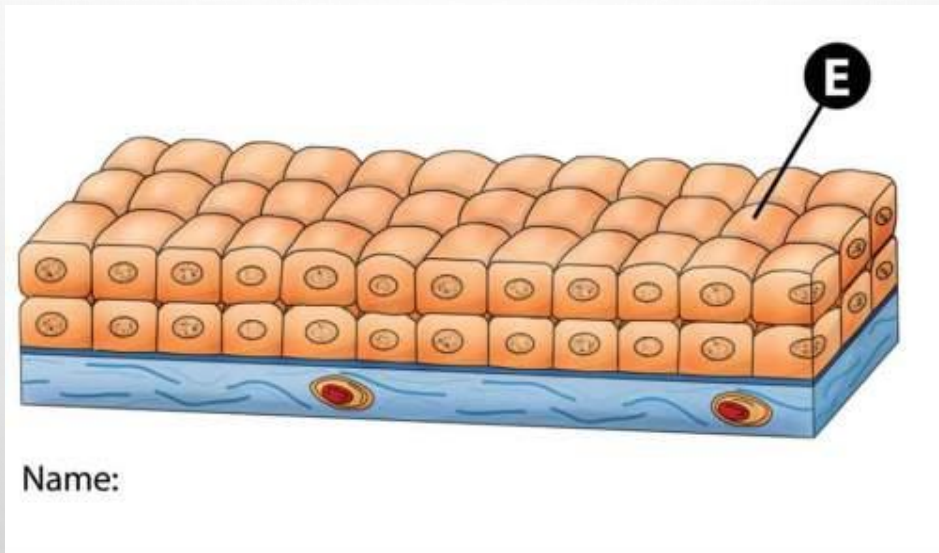
EPITHELIAL TISSUES



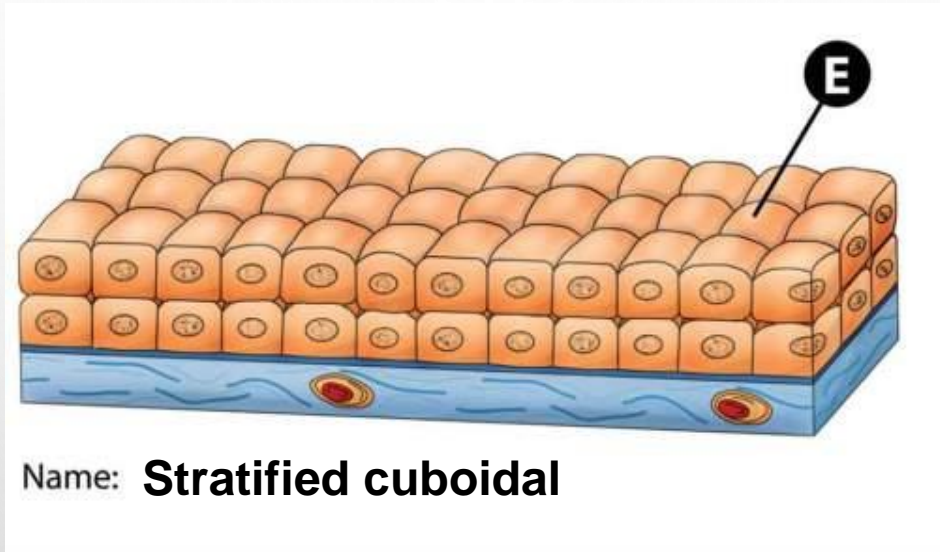
- A. NUCLEUS
- B. SQUAMOUS CELL BODY
- C. COLLAGEN FIBRES IN BASEMENT MEMBRANE
- D. CUBOIDAL EPITHELIAL CELL



EPITHELIAL TISSUES

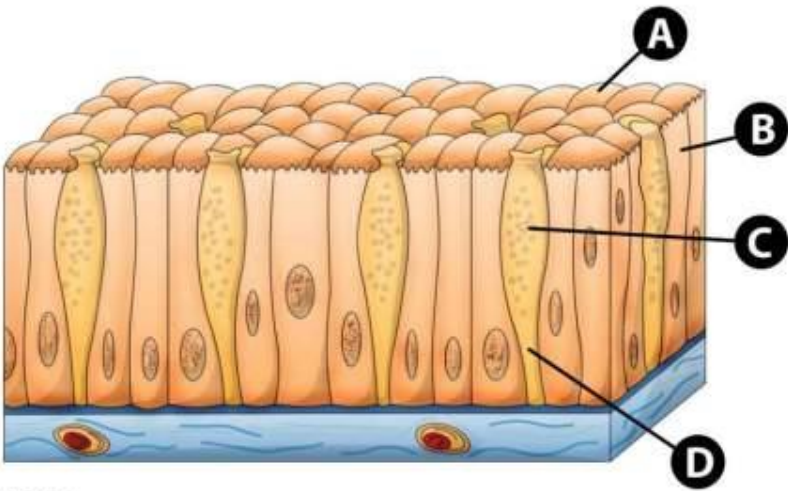


EPITHELIAL TISSUES

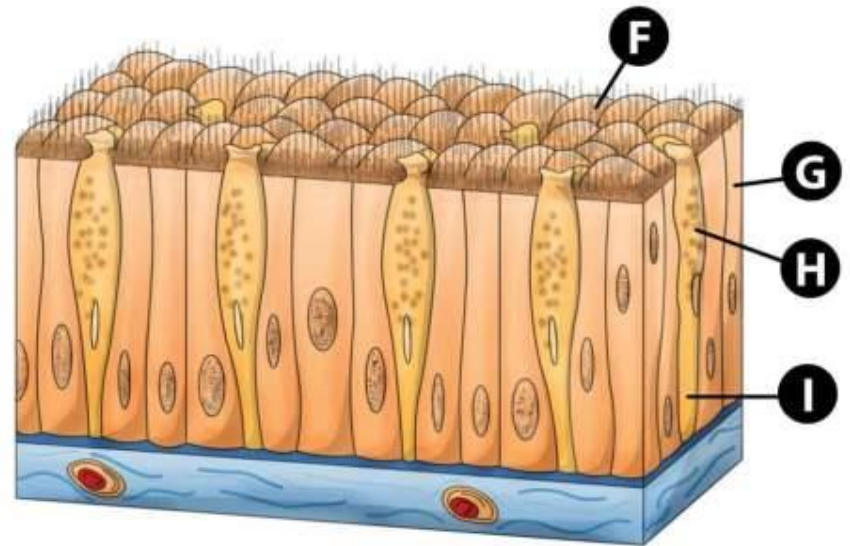


A. CUBOIDAL CELLS

EPITHELIAL TISSUES

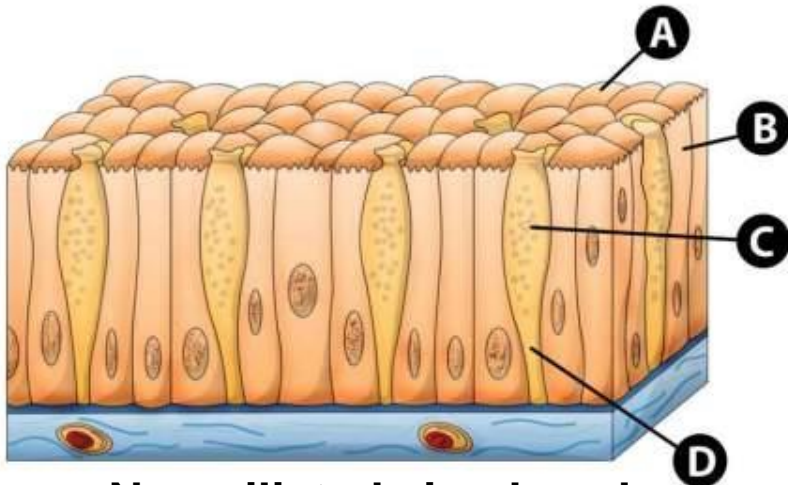


Name:

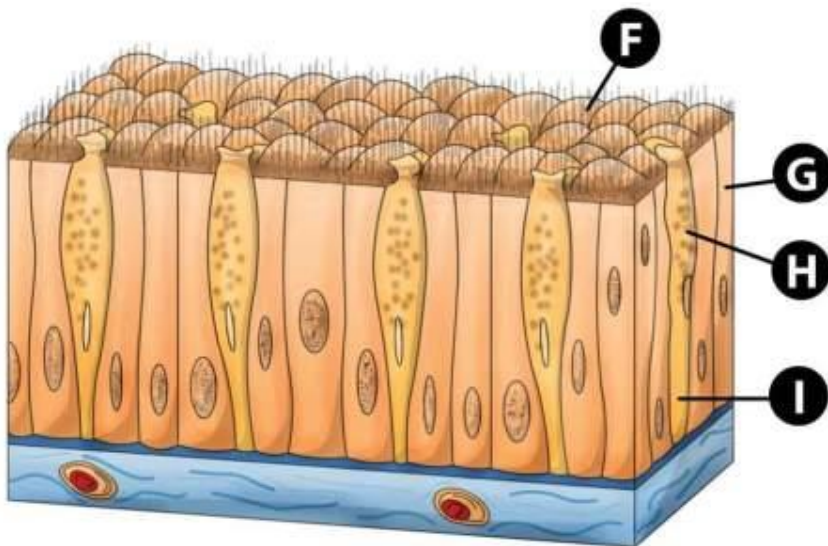


Name:

EPITHELIAL TISSUES



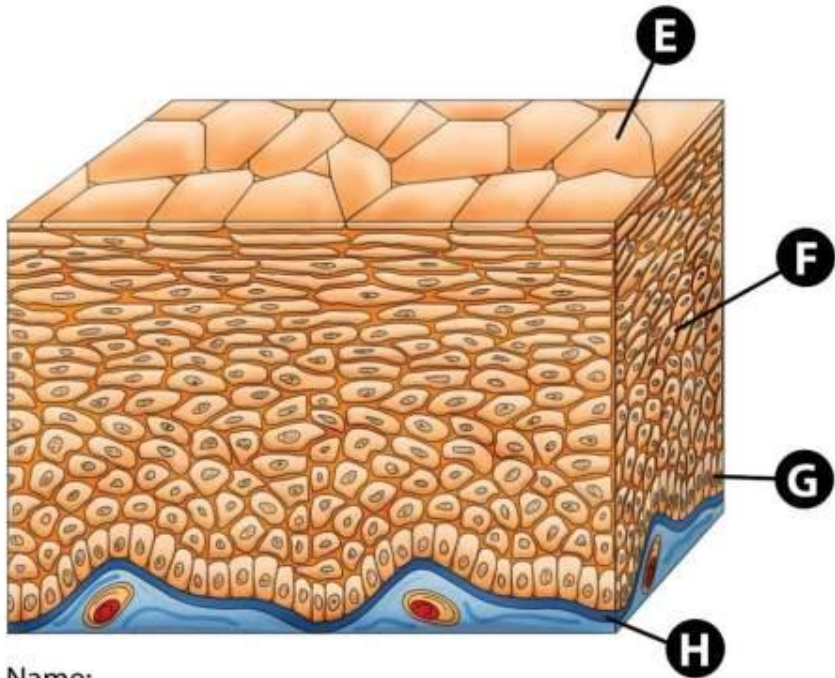
Name: **Non-ciliated simple columnar**



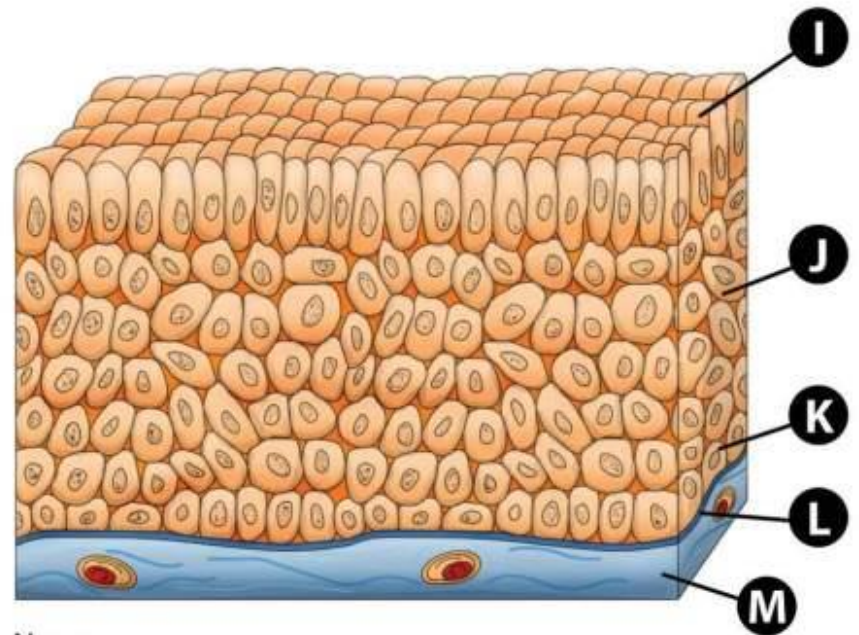
Name: **Ciliated simple columnar**

- A. MICROVILLUS BORDER
- B. COLUMNAR CELL
- C. MUCUS IN GOBLET CELL
- D. GOBLET CELL
- E. .
- F. CILIA
- G. COLUMNAR CELL
- H. MUCOUS IN GOBLET CELL
- I. GOBLET CELL

EPITHELIAL TISSUES

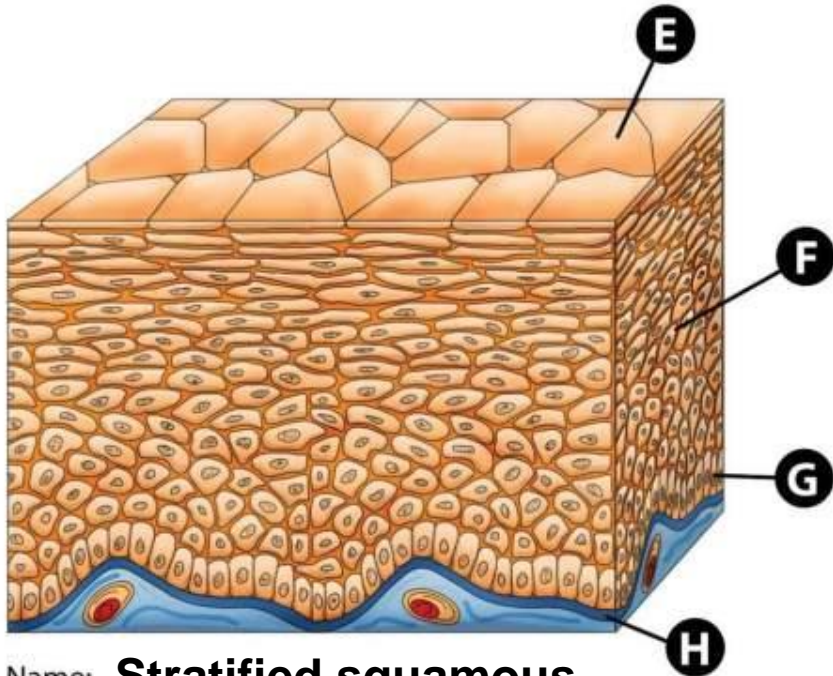


Name:



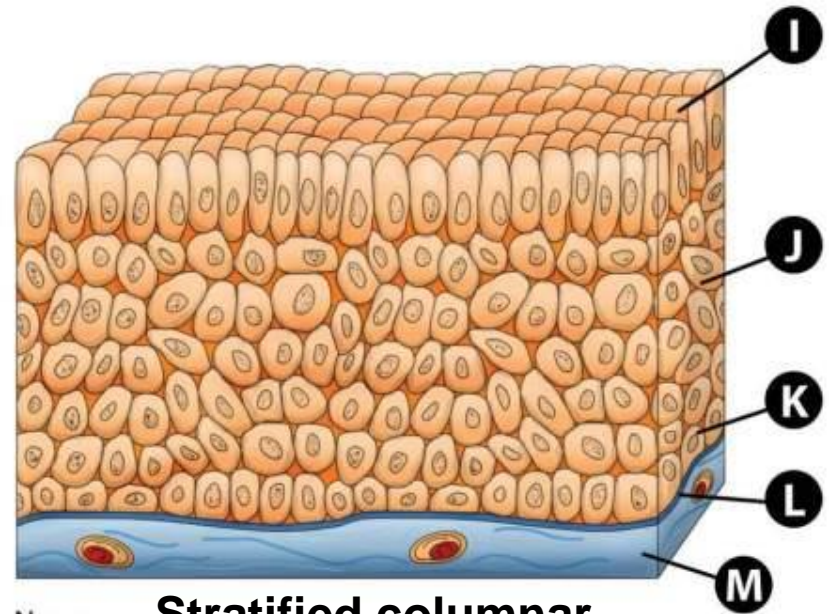
Name:

EPITHELIAL TISSUES



Name: **Stratified squamous**

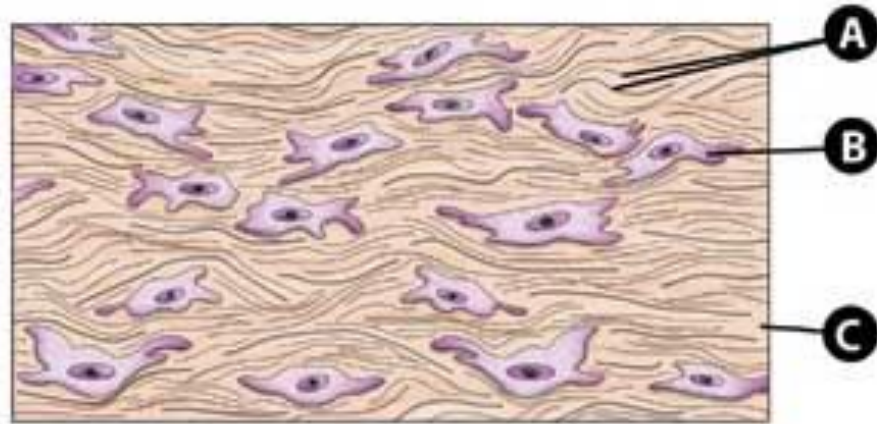
- E. STRATIFIED / KERATINISED SQUAMOUS CELL
- F. INTERMEDIATE CELLS
- G. BASAL CELLS
- H. BASEMENT MEMBRANE



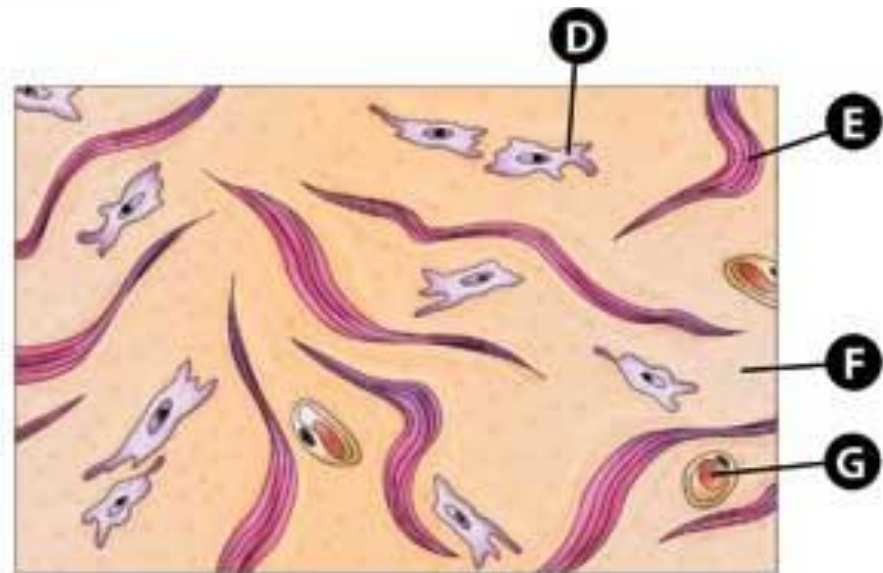
Name: **Stratified columnar**

- I. Columnar cells
- J. Intermediate cells
- K. Basal cells
- L. Basement membrane
- M. Connective tissue

CONNECTIVE TISSUES



Name:



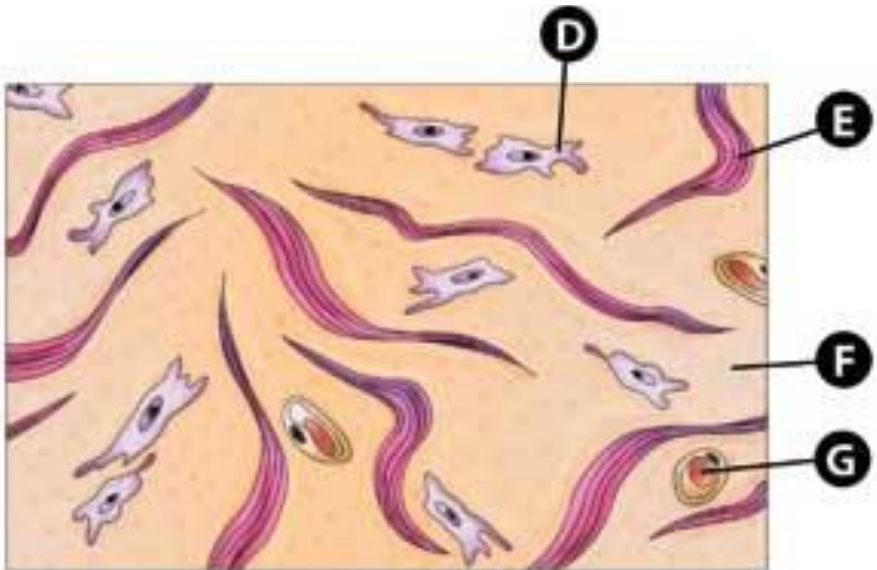
Name:

CONNECTIVE TISSUES



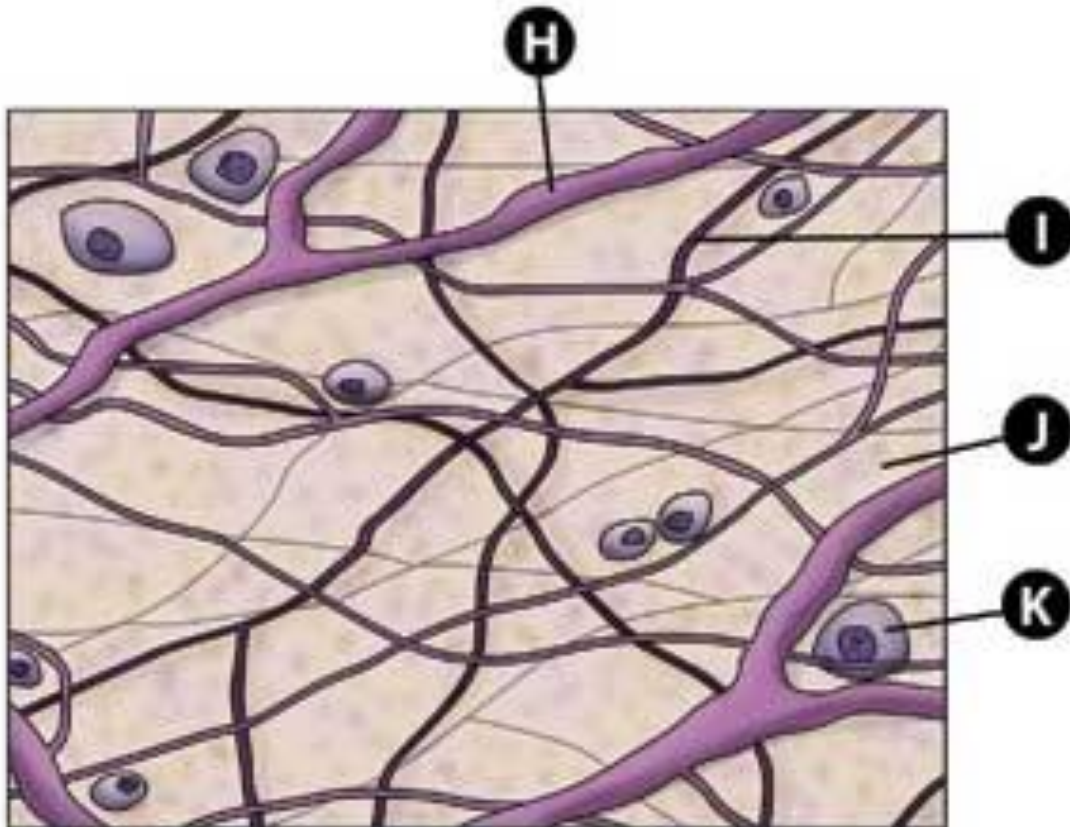
Name: **Dense regular connective tissue**

- A. COLLAGEN FIBRES
- B. FIBROBLASTS
- C. GROUND SUBSTANCE
- D. FIBROBLASTS
- E. COLLAGEN FIBRES
- F. GROUND SUBSTANCE
- G. CAPILLARIES



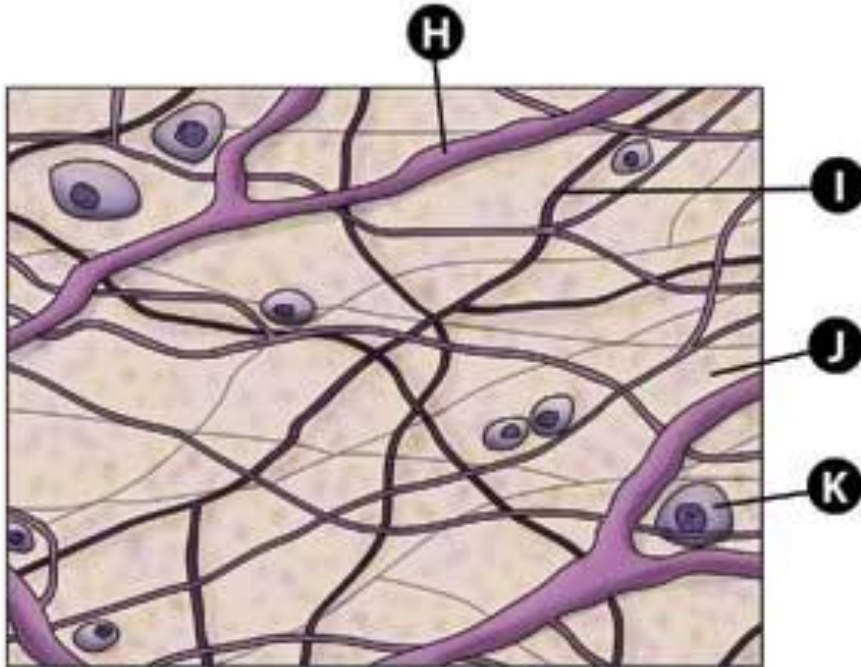
Name: **Dense irregular connective tissue**

CONNECTIVE TISSUES



Name:

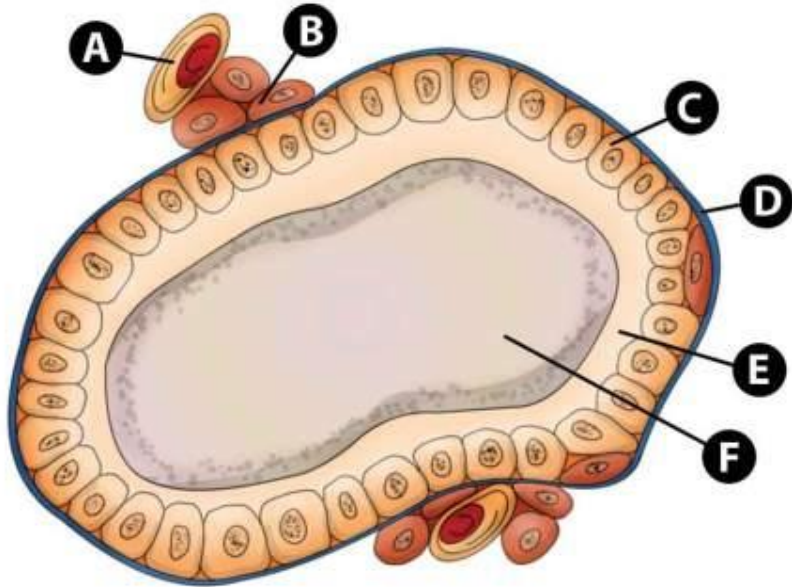
CONNECTIVE TISSUES



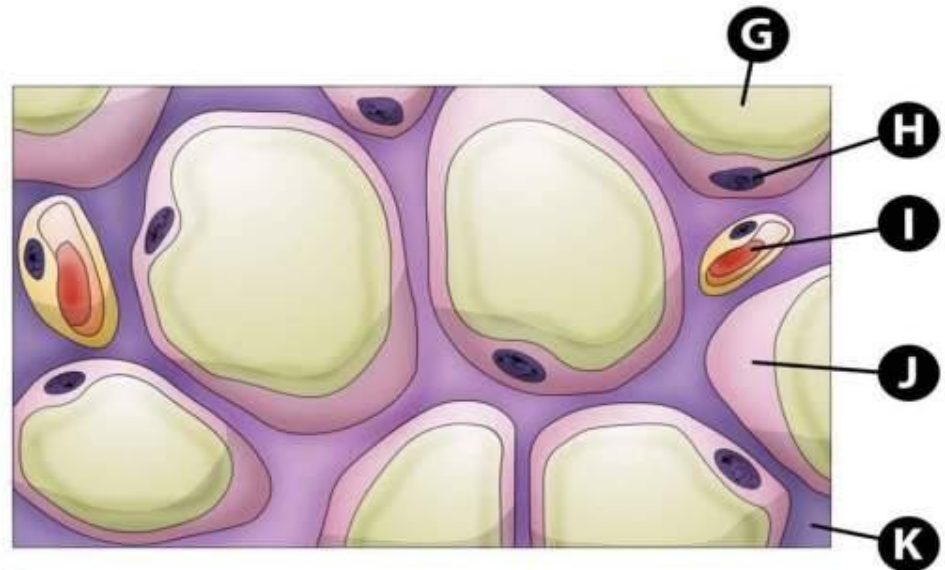
- H. COLLAGEN FIBRE
- I. ELASTIN FIBRE
- J. GROUND SUBSTANCE
- K. FIBROBLAST

Name: **Areolar connective tissue**

CONNECTIVE TISSUES

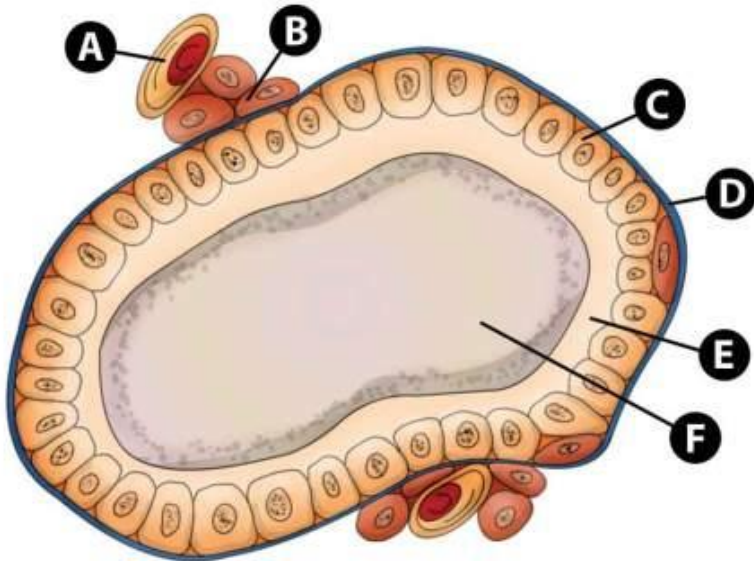


Name:

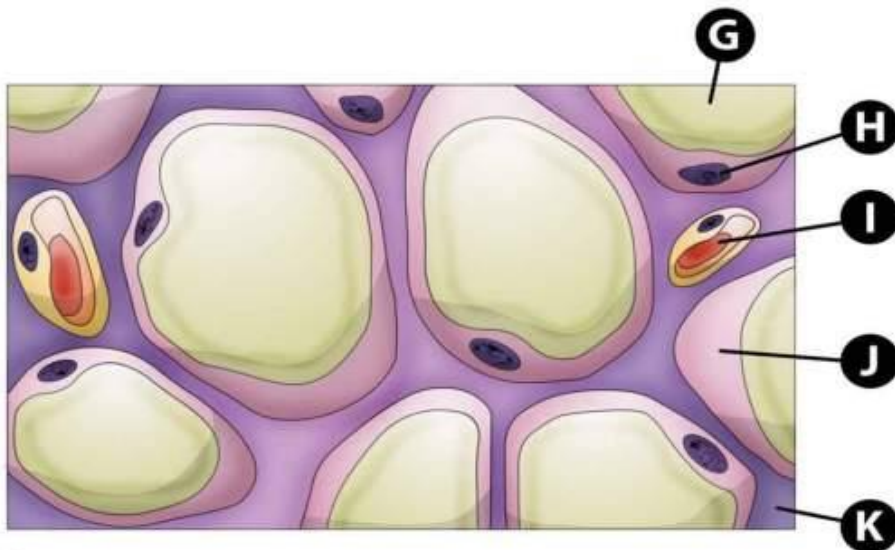


Name:

CONNECTIVE TISSUES



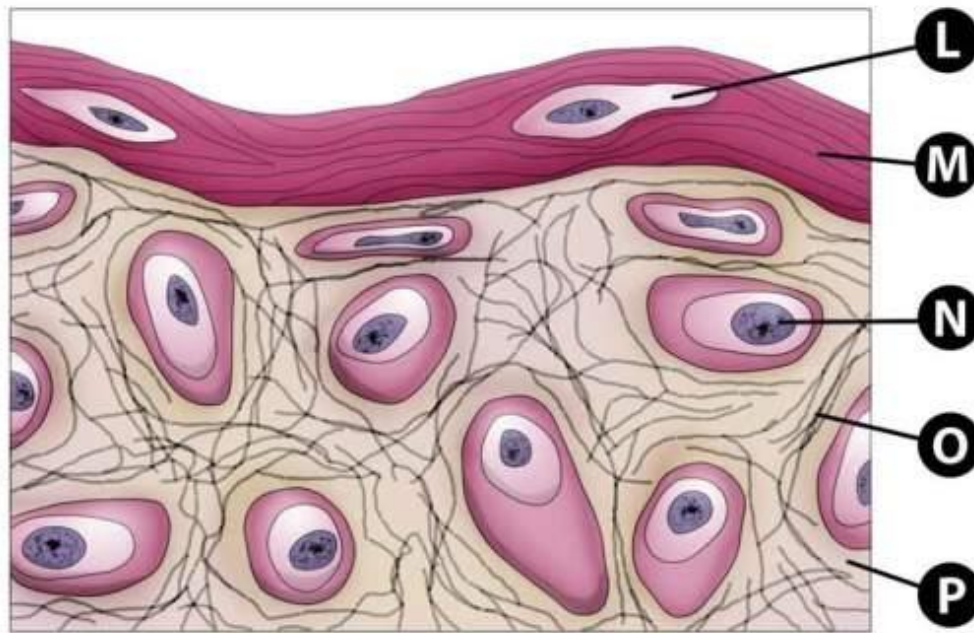
Name: **Endocrine gland - thyroid**



Name: **Adipose tissue**

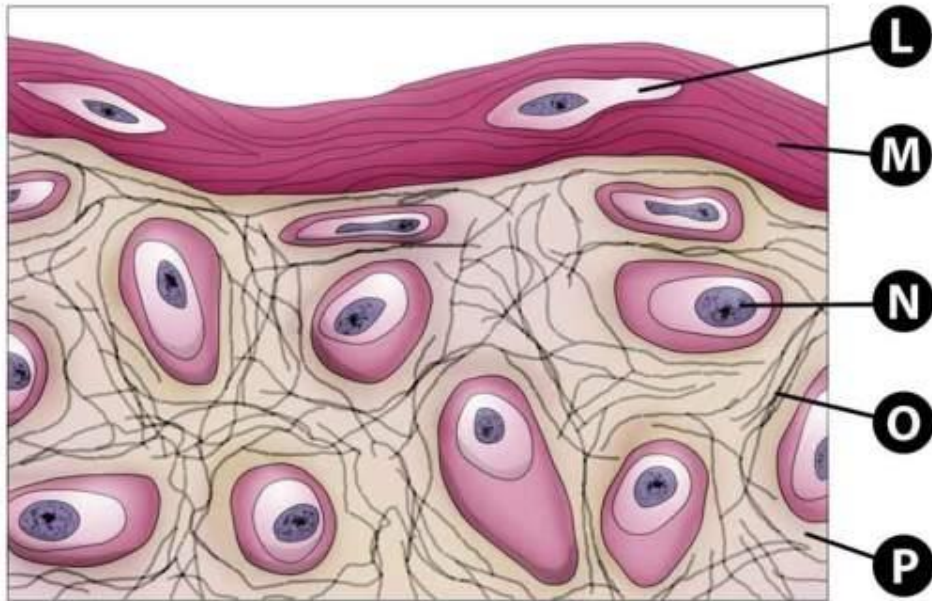
- A. CAPILLARY
- B. SUPPORT CELLS
- C. GLANDULAR CELLS (ENDOCRINE)
- D. CAPSULE
- E. STROMA
- F. LUMEN/DUCT
- G. ADIPOSE DEPOSIT
- H. ADIPOCYTE NUCLEUS
- I. CAPILLARY
- J. CYTOPLASM
- K. INTERSTITIAL SPACE

CONNECTIVE TISSUES



Name:

CONNECTIVE TISSUES



L. FIBROBLAST

M. IRREGULAR CONNECTIVE TISSUE (COLLAGEN)

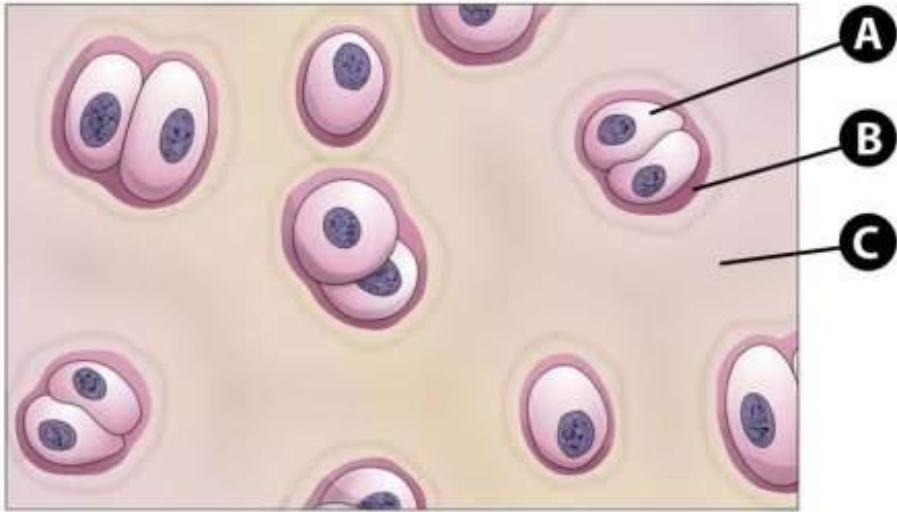
N. CHONDROCYTE

O. ELASTIC FIBRES

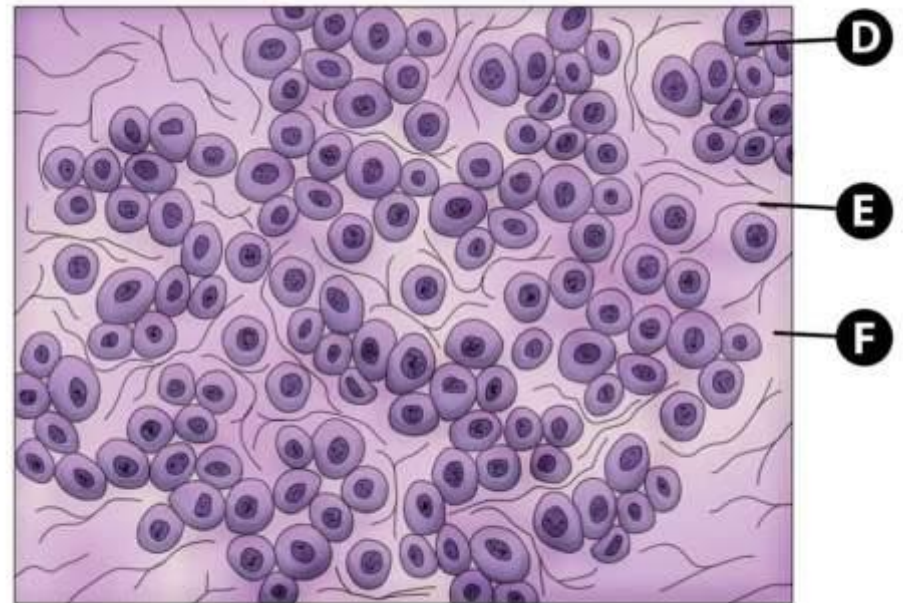
P. GROUND SUBSTANCE

Name: **Elastic cartilage**

CONNECTIVE TISSUES

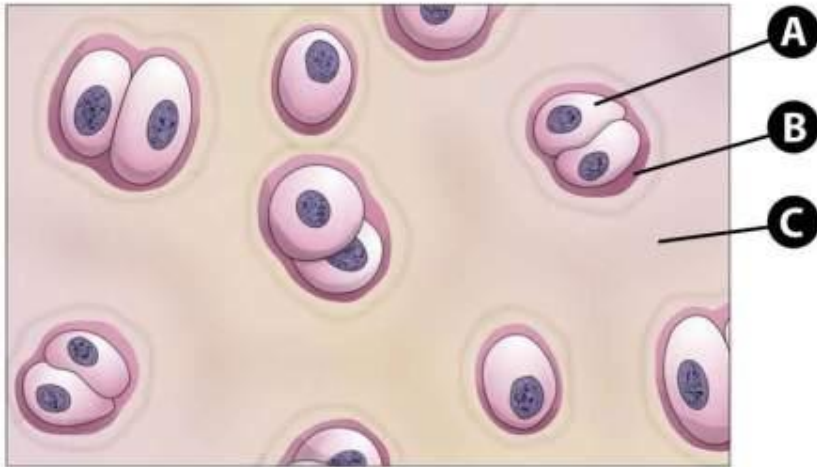


Name:

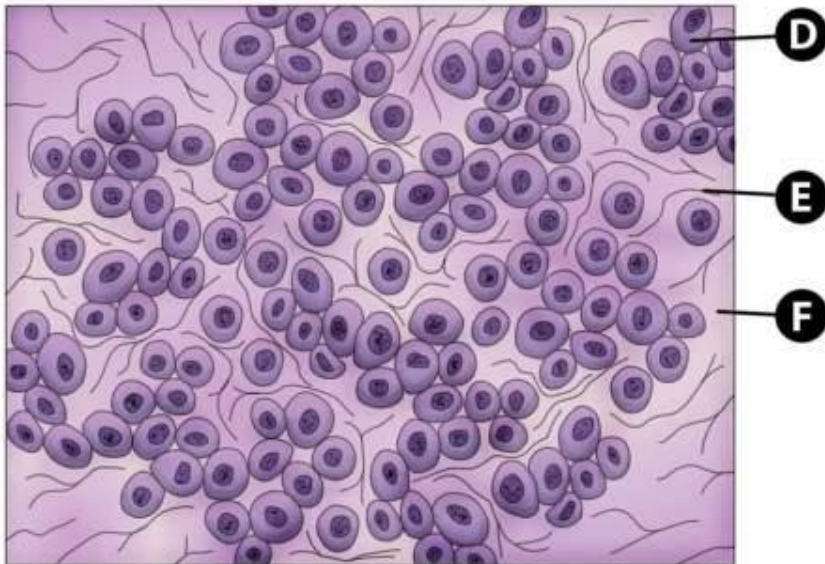


Name:

CONNECTIVE TISSUES



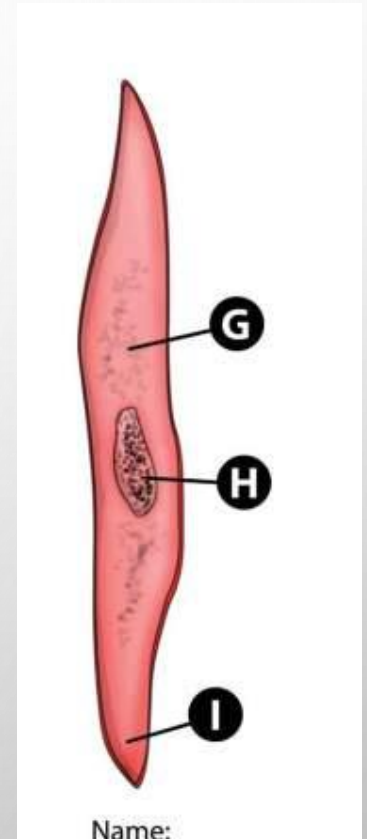
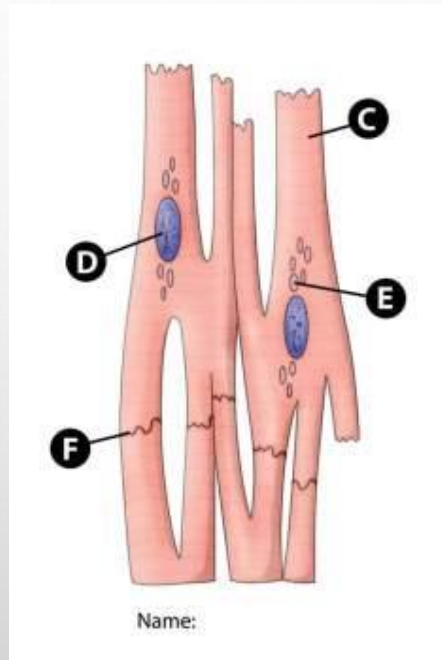
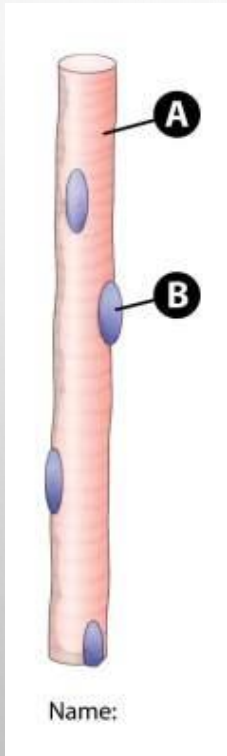
Name: **Hyaline cartilage**



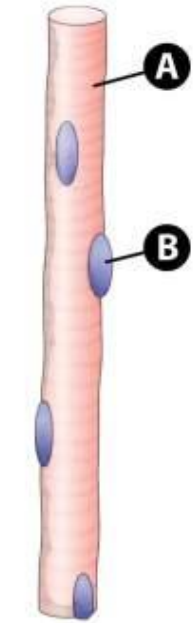
Name: **Reticular connective tissue**

- A. CHONDROCYTE
- B. LACUNA
- C. GROUND SUBSTANCE
- D. RETICULAR CELL
- E. RETICULAR FIBRES
- F. GROUND SUBSTANCE

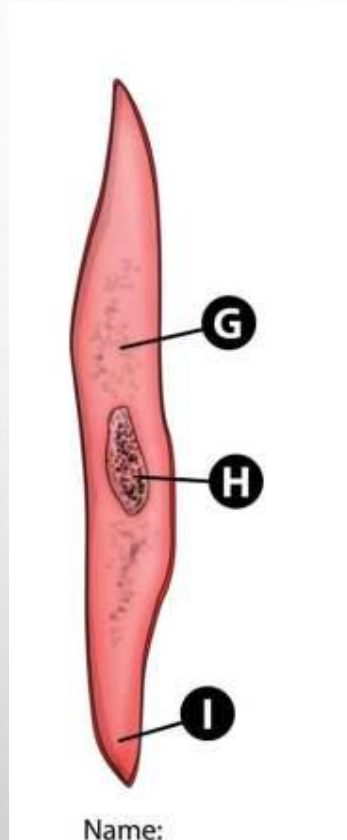
MUSCLE TISSUE



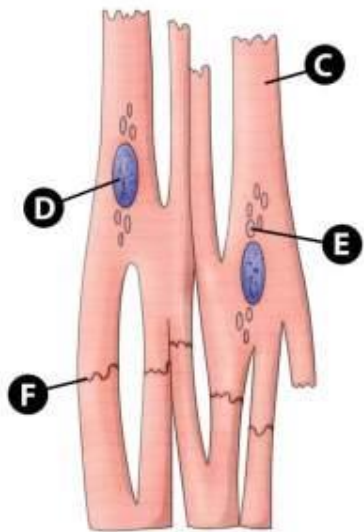
MUSCLE TISSUE



Name:
Striated



Name:
Smooth



Name:
Cardiac

A. SKELETAL MUSCLE FIBRE

B. NUCLEUS

C. CARDIAC MUSCLE FIBRE

D. NUCLEUS

E. MITOCHONDRIA

F. INTERCALATED DISC

G. MITOCHONDRIA

H. NUCLEUS

I. SMOOTH MUSCLE FIBRE

The image features a light gray background with several realistic water droplets of various sizes scattered across it. The droplets are rendered with soft shadows and highlights, giving them a three-dimensional appearance. In the center of the image, the word "END" is written in a bold, black, sans-serif font.

END