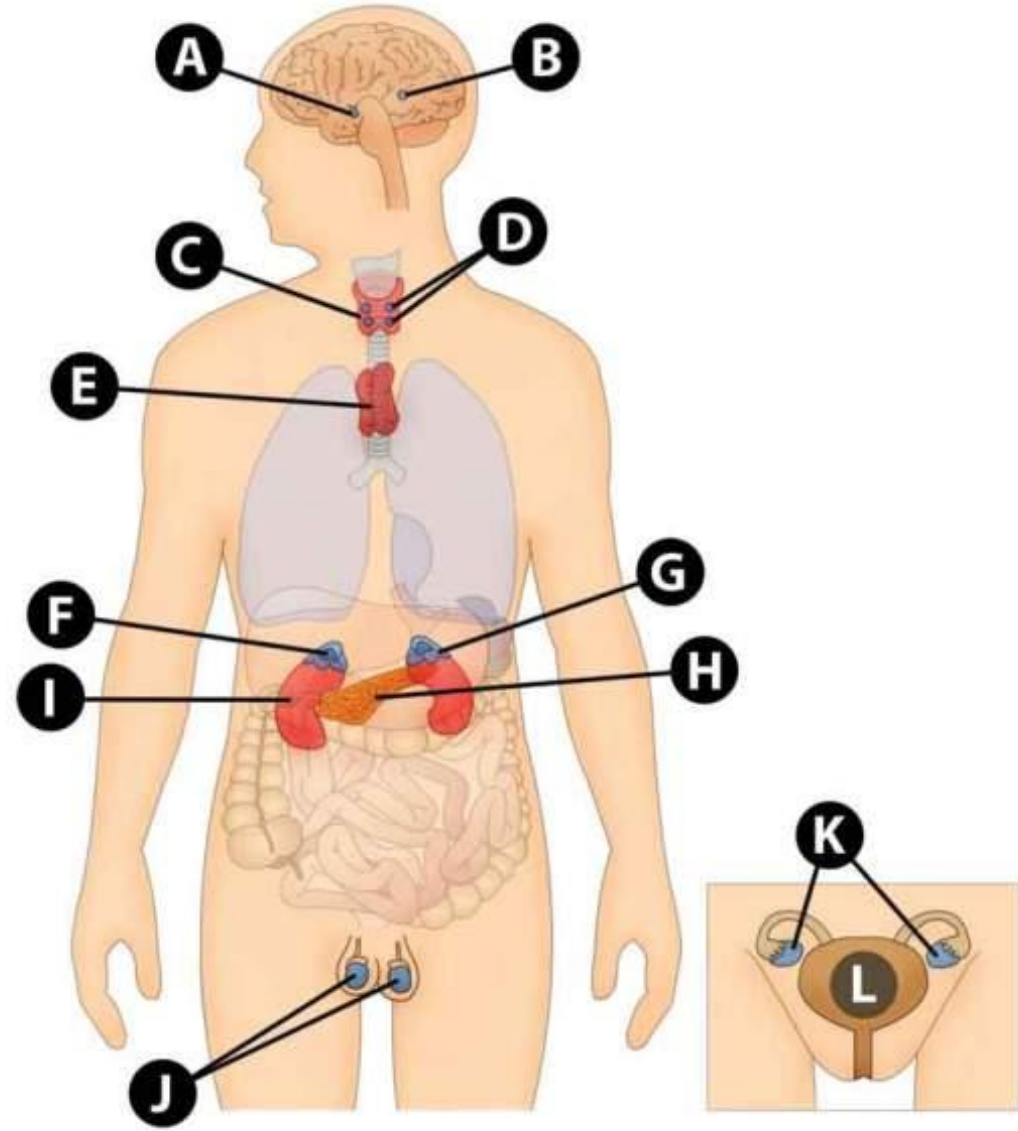




THE ENDOCRINE SYSTEM

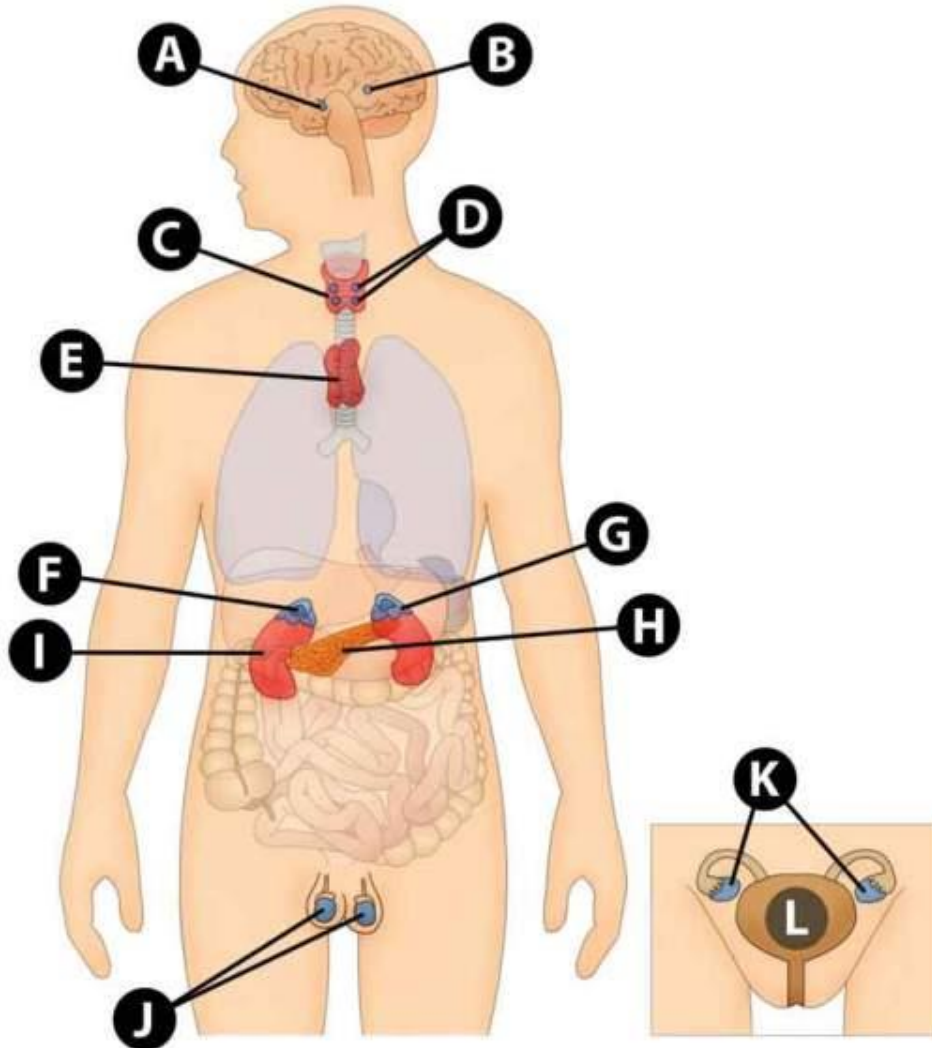
- IDENTIFY ALL THE LABELS ON THE FOLLOWING SERIES OF IMAGES
- 

Endocrine glands



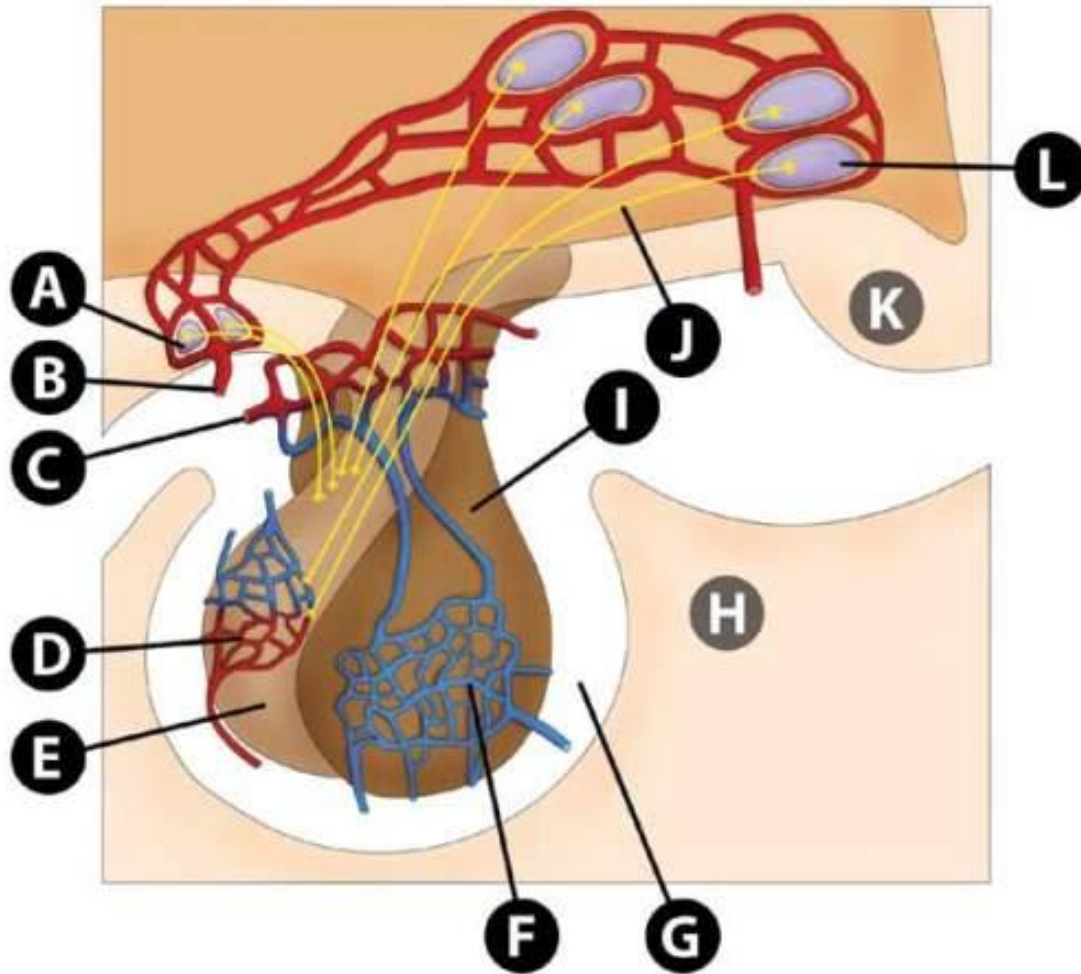
ENDOCRINE GLANDS

Endocrine glands

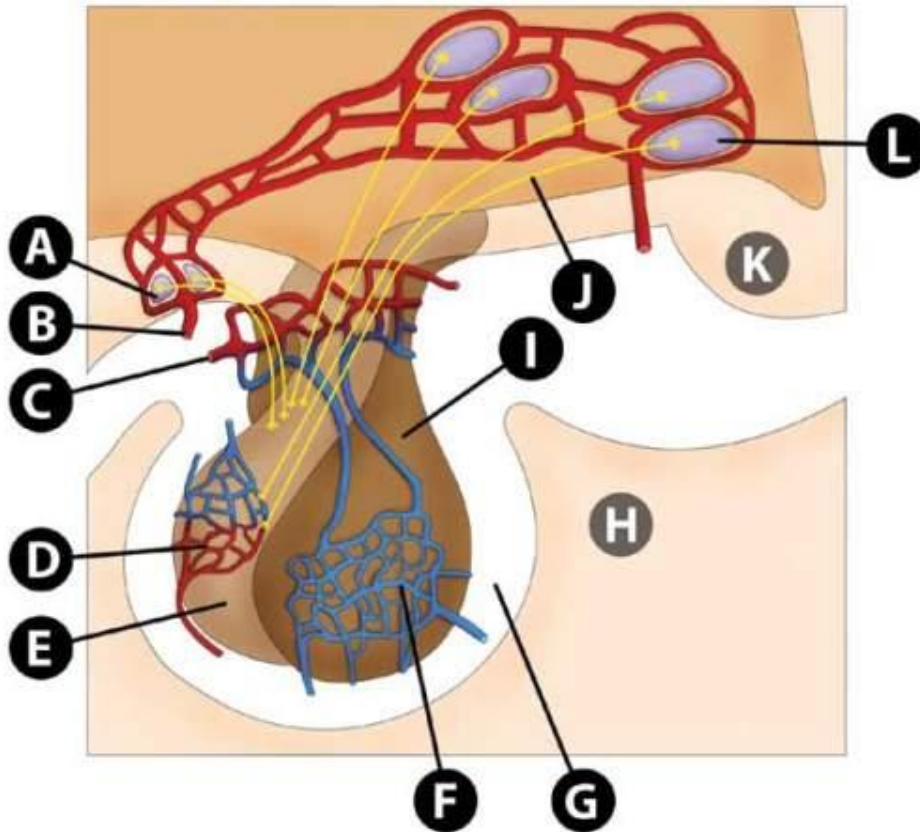


- A. PITUITARY GLAND
- B. PINEAL GLAND
- C. THYROID GLAND
- D. PARATHYROID GLANDS
- E. THYMUS GLAND
- F. ADRENAL MEDULLA
- G. ADRENAL CORTEX
- H. PANCREAS
- I. THE KIDNEYS
- J. THE TESTES
- K. THE OVARIES
- L. THE UTERUS

Hypothalamus and pituitary



Hypothalamus and pituitary



- A. ADENOHYPOPHYSEAL HORMONES (FSH & ACTH SITES)
- B. HYPOTHALAMIC ARTERY
- C. SUPERIOR HYPOPHYSEAL ARTERY
- D. CAPILLARY PLEXUS OF THE INFUNDIBULAR PROCESS.
- E. POSTERIOR PITUITARY
- F. SECONDARY PLEXUS OF THE HYPOPHYSEAL PORTAL SYSTEM
- G. ANTERIOR HYPOPHYSEAL VEINS
- H. SPHENOID BONE (THE SELLA)
- I. ANTERIOR PITUITARY
- J. HYPOTHALAMIC TRACTS
- K. OPTIC CHIASMA
- L. NEUROSECRETORY CELLS

The image features a light gray background with several realistic water droplets of various sizes scattered across it. The droplets are rendered with soft shadows and highlights, giving them a three-dimensional appearance. In the center of the image, the word "END" is written in a bold, black, sans-serif font.

END